

QA protocol: P2A_B6_M2

Johannes Müller^{1,2,†}, Theresa Suckert^{1,3,†}, Elke Beyreuther^{1, 4}, Moritz Schneider¹, Marc Boucsein⁵, Elisabeth Bodenstein^{1, 2}, Liane Stolz-Kieslich^{1, 2}, Mechthild Krause^{1,2,3, 6, 7}, Cläre von Neubeck^{1, 3, 8}, Robert Haase⁹, Armin Lühr^{1, 2, 3, 10 #}, and Antje Dietrich^{1,3,*,#}

¹*OncoRay - National Center for Radiation Research in Oncology, Faculty of Medicine and University Hospital Carl Gustav Carus, Technische Universität Dresden, Helmholtz-Zentrum Dresden-Rossendorf, Dresden, 01309, Germany*

²*Helmholtz-Zentrum Dresden-Rossendorf, Institute of Radiooncology - OncoRay, Dresden, 01309, Germany*

³*German Cancer Consortium (DKTK), Partner Site Dresden, and German Cancer Research Center (DKFZ), Heidelberg, 69120, Germany*

⁴*Helmholtz - Zentrum Dresden - Rossendorf, Institute of Radiation Physics, Dresden, 01328, Germany*

⁵*Clinical Cooperation Unit Radiation Oncology, German Cancer Research Center (DKFZ), and Department of Radiation Oncology, Heidelberg University Hospital, Heidelberg, 69120, Germany*

⁶*Department of Radiotherapy and Radiation Oncology, Faculty of Medicine and University Hospital Carl Gustav Carus, Technische Universität Dresden, Dresden, Germany*

⁷*National Center for Tumor Diseases (NCT) Dresden, Dresden, 01307, Germany*

⁸*Department of Particle Therapy, University Hospital Essen, University of Duisburg-Essen, Essen, Germany*

⁹*DFG Cluster of Excellence Physics of Life, TU Dresden*

¹⁰*TU Dortmund, Dortmund, Germany*

[†]*these authors share first-authorship*

[#]*these authors share last-authorship*

January 31, 2021

Contents

1	CBCT image data	3
2	Simulation image data	3
3	Atlas image data	4
4	MRI image data	5
4.1	Denoising	5
4.1.1	Sequence type: T1	5
4.1.2	Sequence type: T2	16
4.2	Registration (timepoints)	26
4.2.1	Sequence type: T1	26
4.2.2	Sequence type: T2	27
4.3	Warping to CBCT	29
5	Histology image data	30
5.1	Bundle registration	30
5.1.1	0001.Scene_1	30
5.1.2	0001.Scene_2	31
5.1.3	0002.Scene_1	32
5.1.4	0002.Scene_2	32
5.1.5	0003.Scene_1	33
5.1.6	0003.Scene_2	34
5.1.7	0004.Scene_1	35
5.1.8	0004.Scene_2	35
5.1.9	0005.Scene_1	36
5.1.10	0005.Scene_2	37
5.1.11	0006.Scene_1	38
5.1.12	0006.Scene_2	38
5.1.13	0007.Scene_1	39
5.1.14	0007.Scene_2	40
5.1.15	0008.Scene_1	41
5.1.16	0008.Scene_2	41
5.1.17	0009.Scene_1	42
5.1.18	0009.Scene_2	42
5.1.19	0010.Scene_1	43
5.1.20	0011.Scene_1	44
5.1.21	0011.Scene_2	45
5.1.22	0012.Scene_1	45
5.1.23	0012.Scene_2	46
5.1.24	0013.Scene_1	47
5.1.25	0013.Scene_2	48
5.1.26	0014.Scene_1	48
5.1.27	0014.Scene_2	49
5.2	Slice2Volume	50

1 CBCT image data

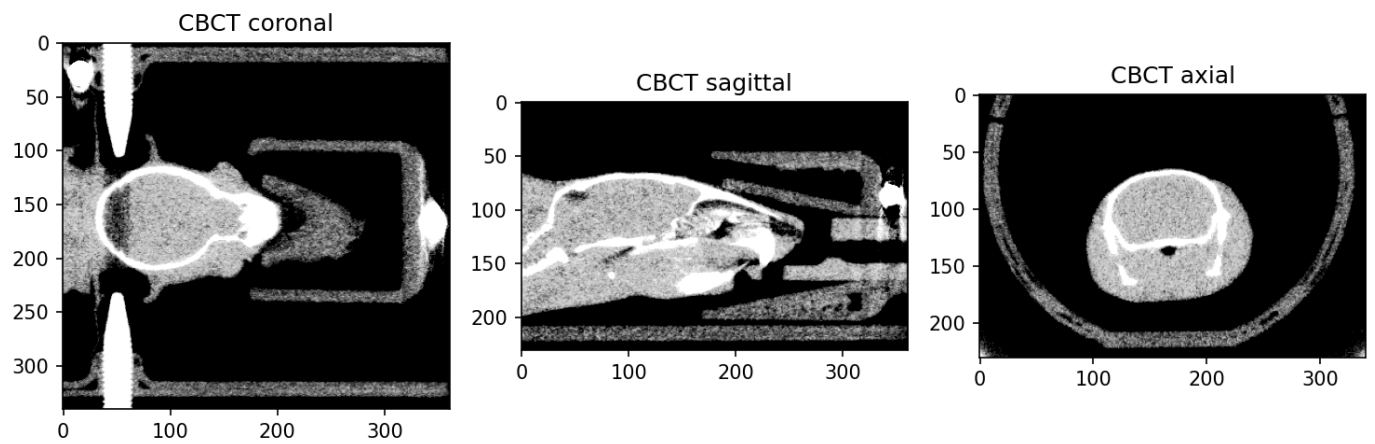


Figure 1.1: Multi-view cutplanes of CBCT serving as anatomical reference

2 Simulation image data

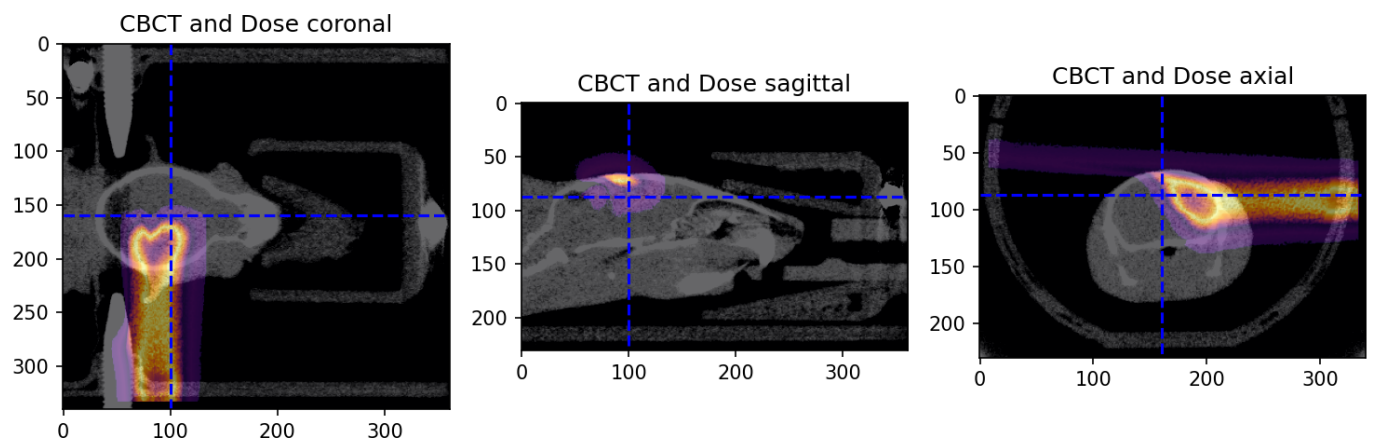


Figure 2.1: Overlay of CBCT and simulated dose distribution

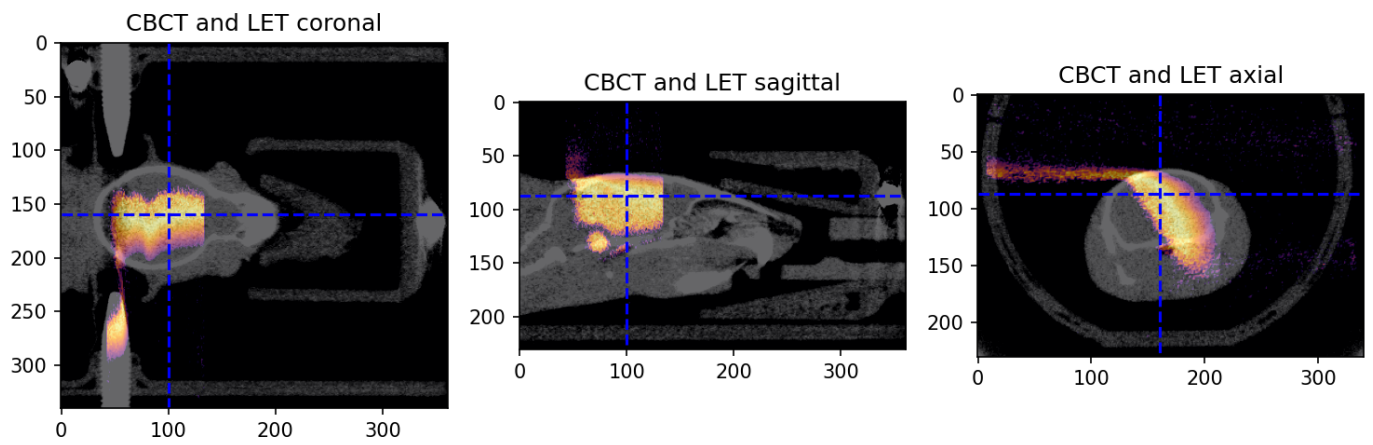


Figure 2.2: Overlay of CBCT and simulated LET distribution

3 Atlas image data

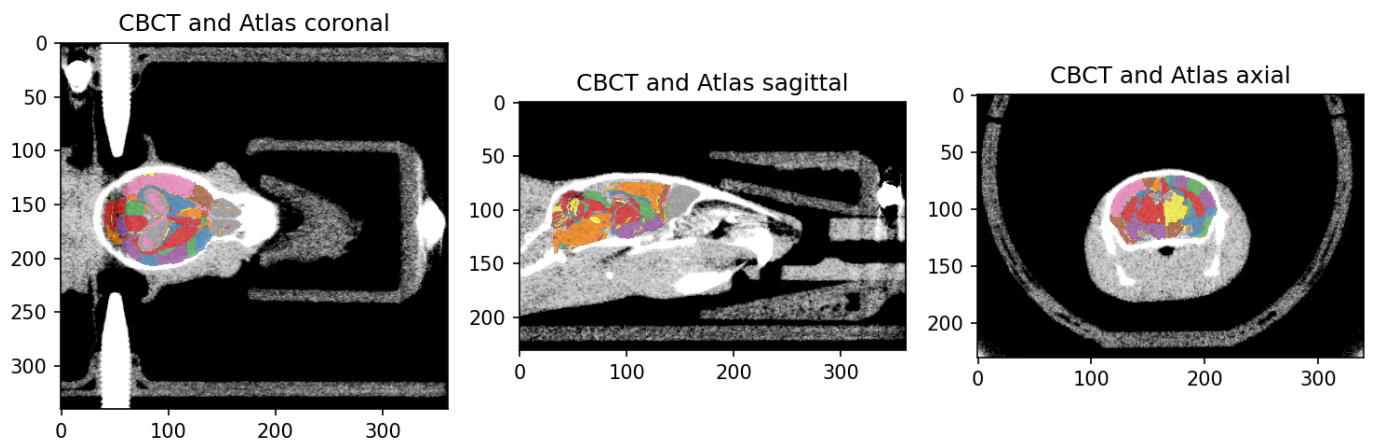


Figure 3.1: Overlay of CBCT and registered DSURQE brain atlas

4 MRI image data

4.1 Denoising

4.1.1 Sequence type: T1

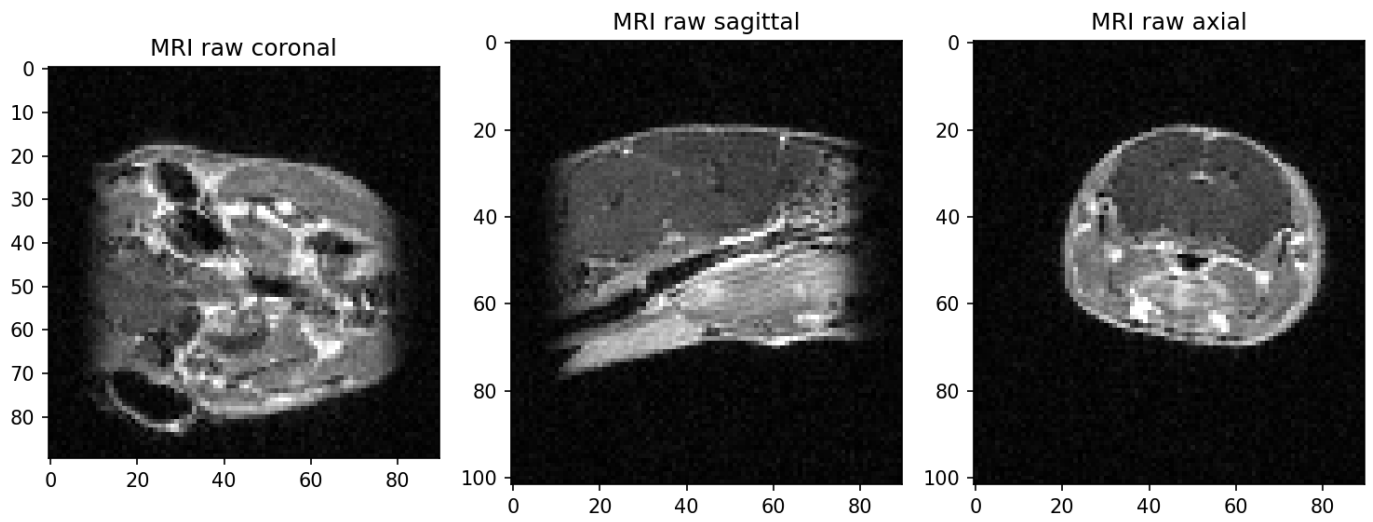


Figure 4.1: Raw MRI image, Timepoint:Week_00, Sequence type: T1

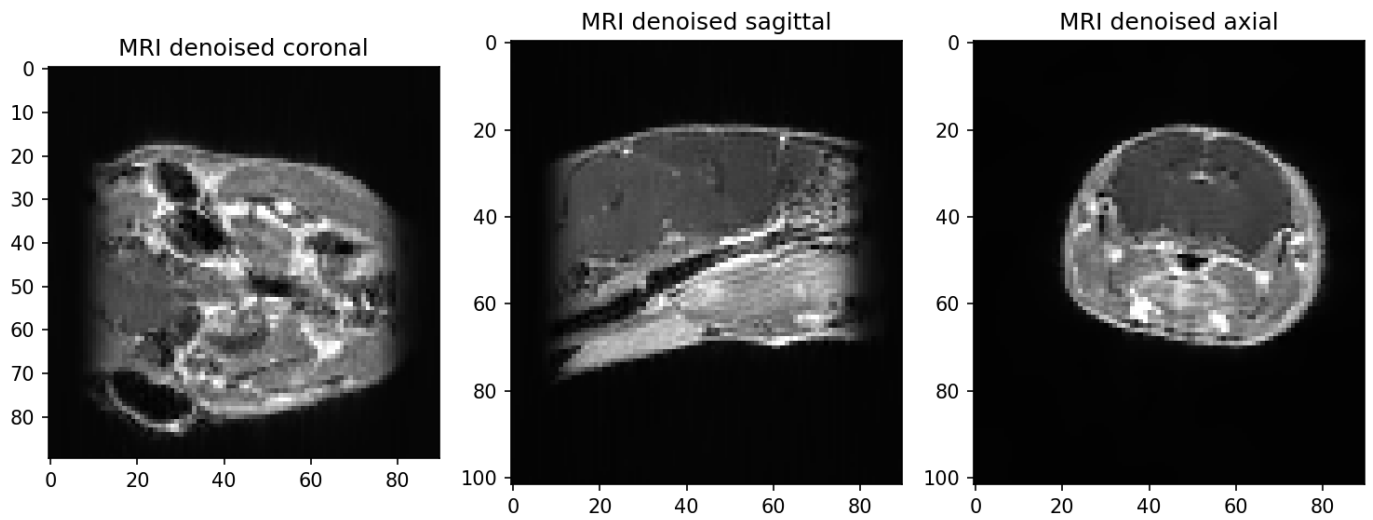


Figure 4.2: Denoised MRI image, Timepoint:Week_00, Sequence type: T1

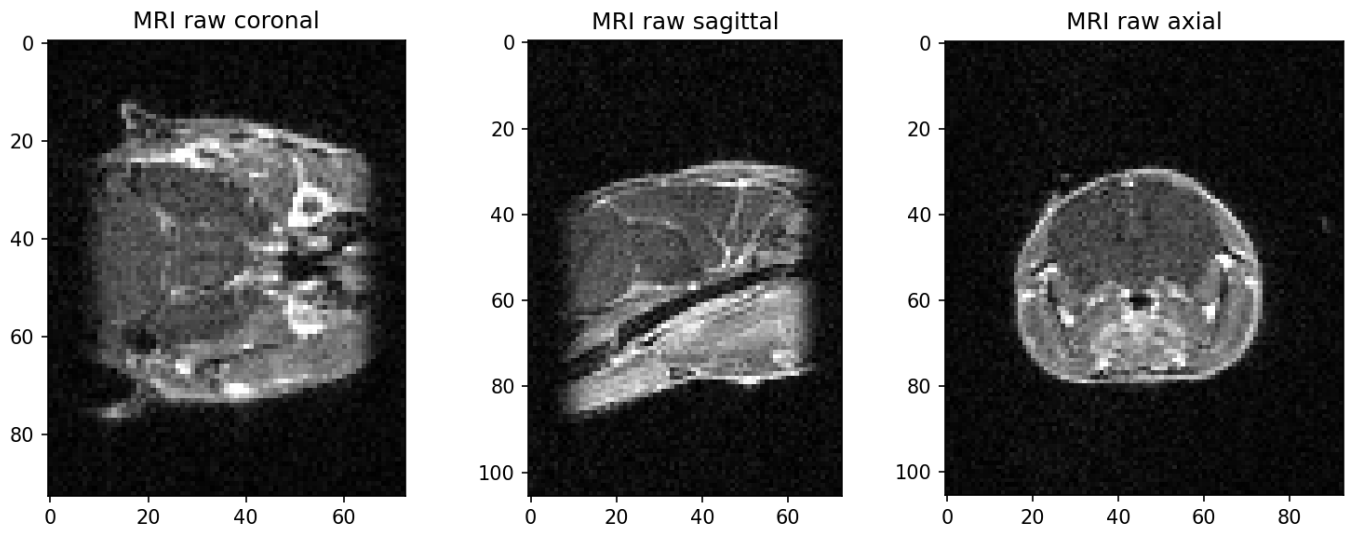


Figure 4.3: Raw MRI image, Timepoint:Week.01, Sequence type: T1

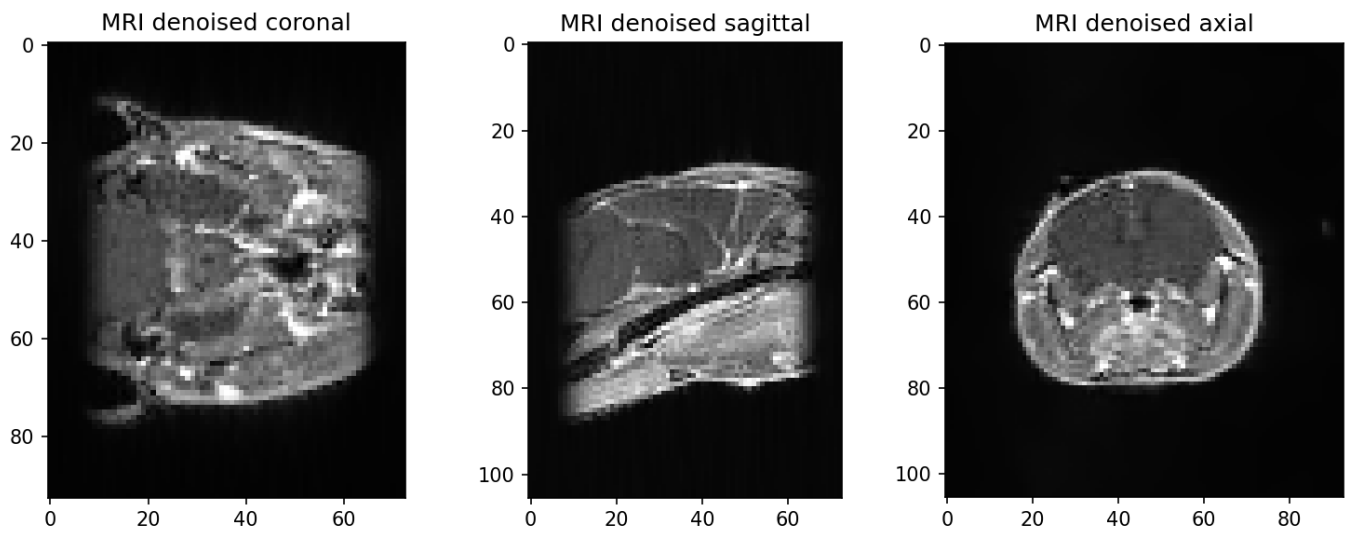


Figure 4.4: Denoised MRI image, Timepoint:Week.01, Sequence type: T1

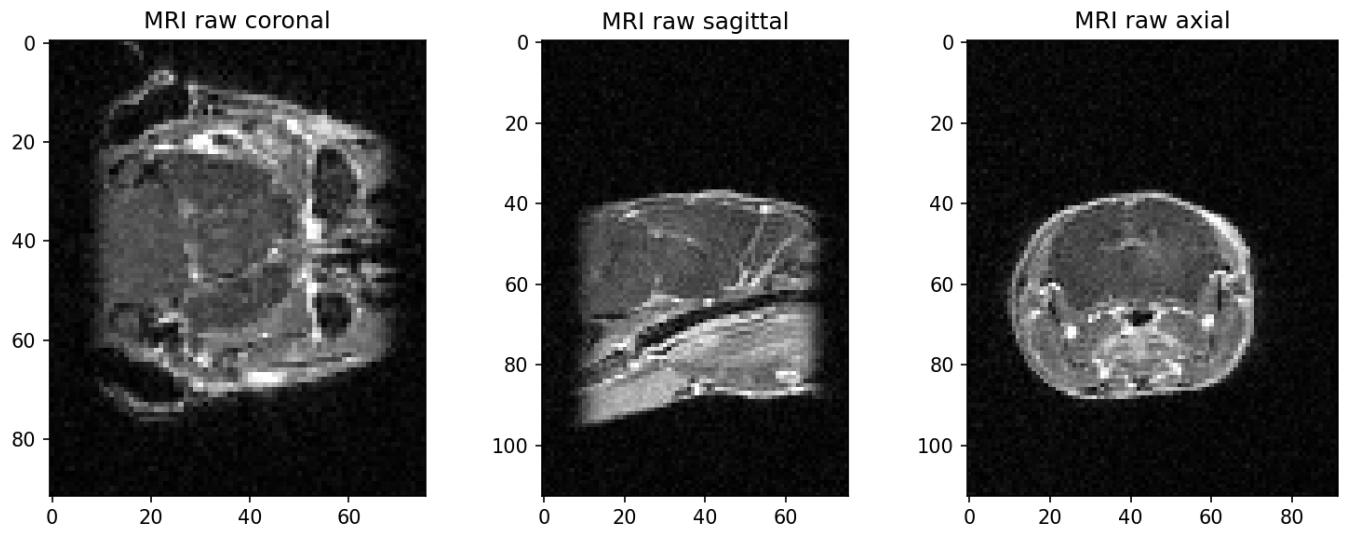


Figure 4.5: Raw MRI image, Timepoint:Week.03, Sequence type: T1

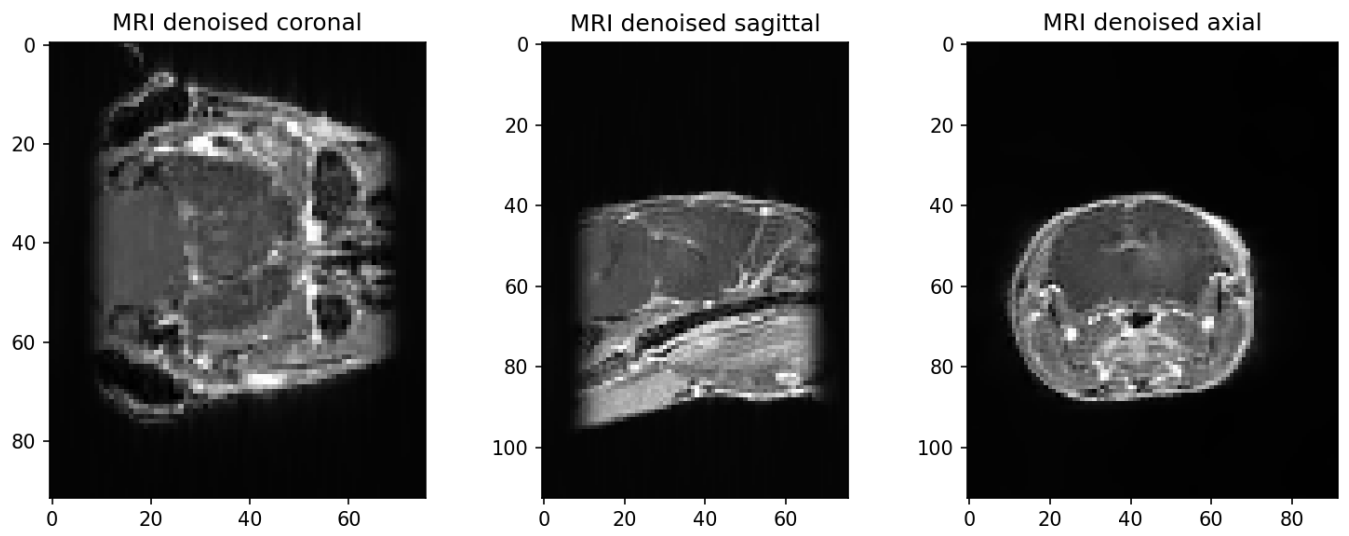


Figure 4.6: Denoised MRI image, Timepoint:Week.03, Sequence type: T1

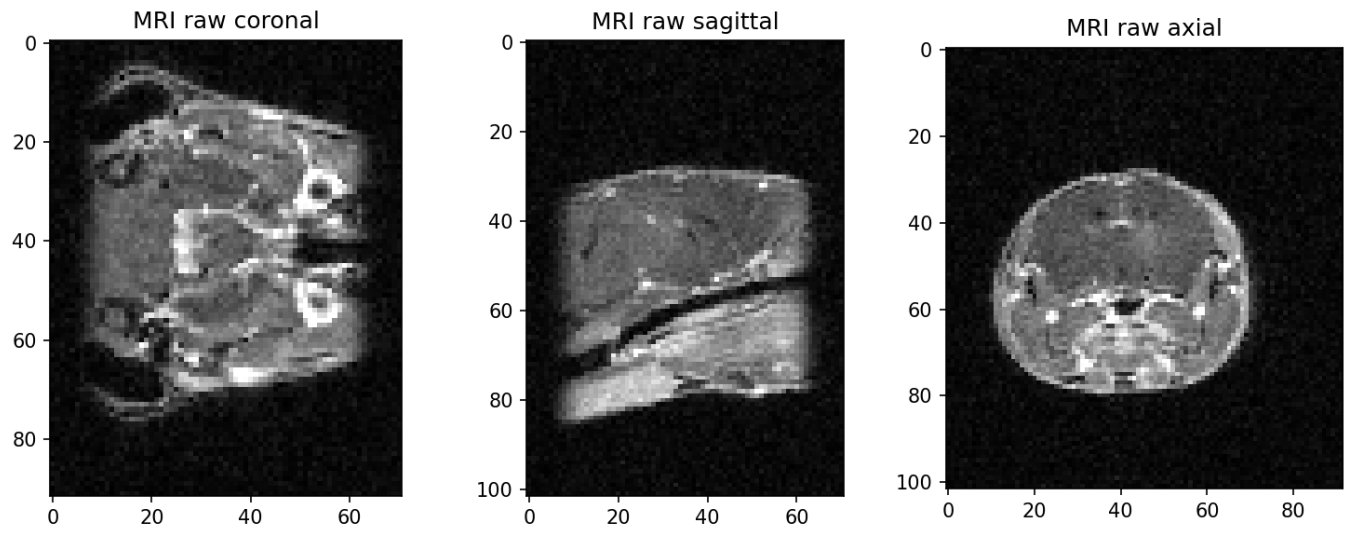


Figure 4.7: Raw MRI image, Timepoint:Week.05, Sequence type: T1

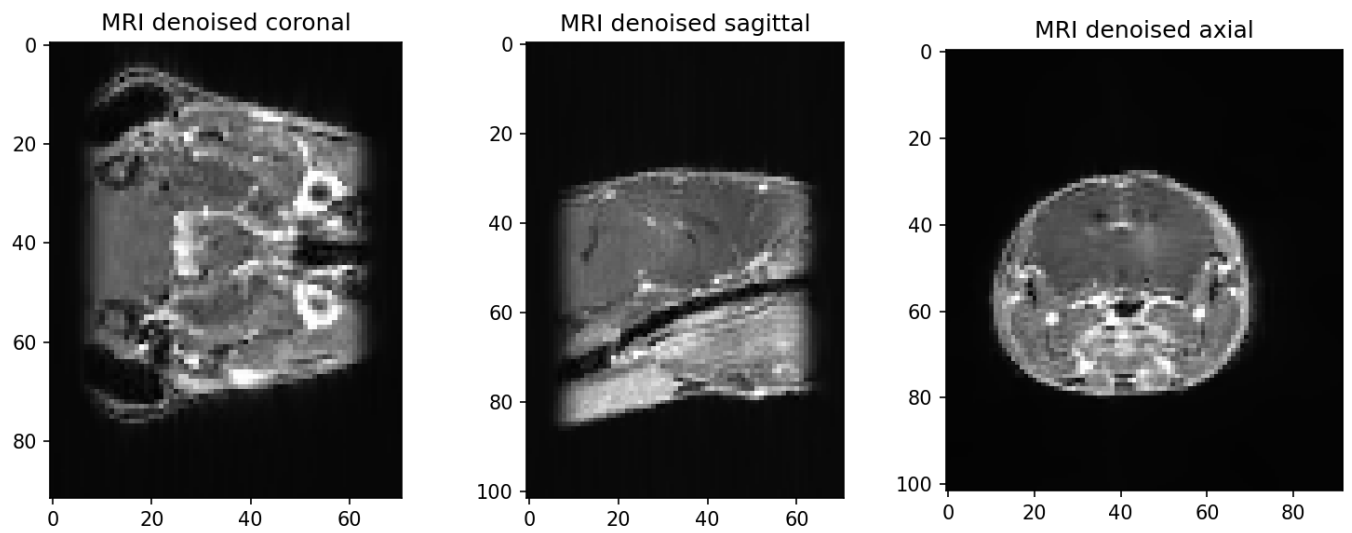


Figure 4.8: Denoised MRI image, Timepoint:Week.05, Sequence type: T1

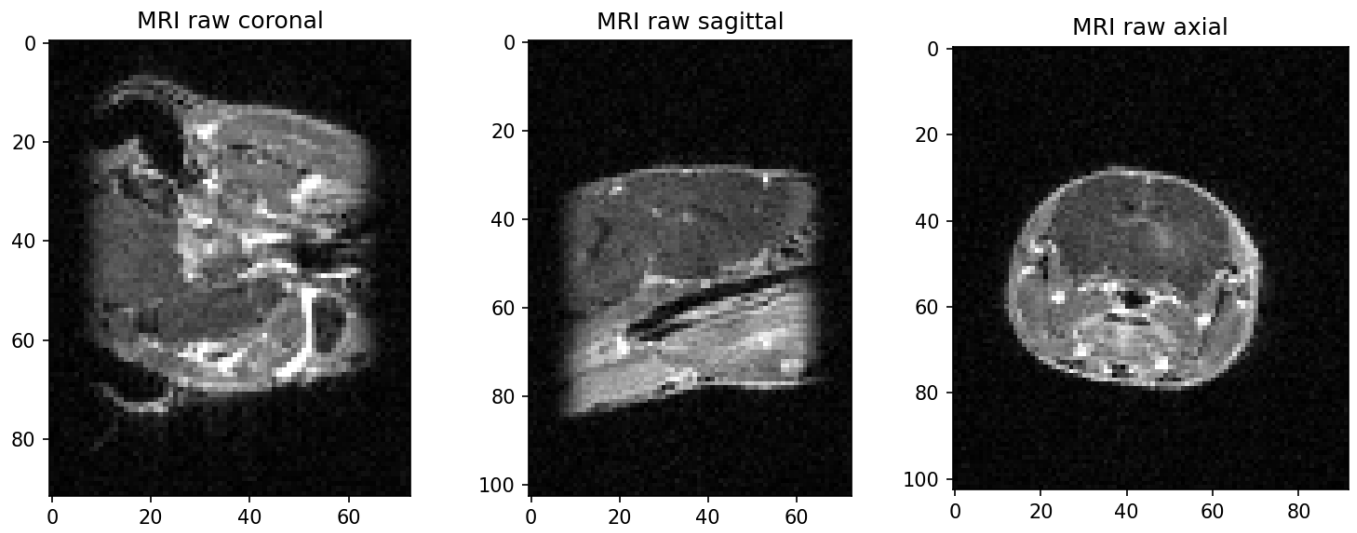


Figure 4.9: Raw MRI image, Timepoint:Week_07, Sequence type: T1

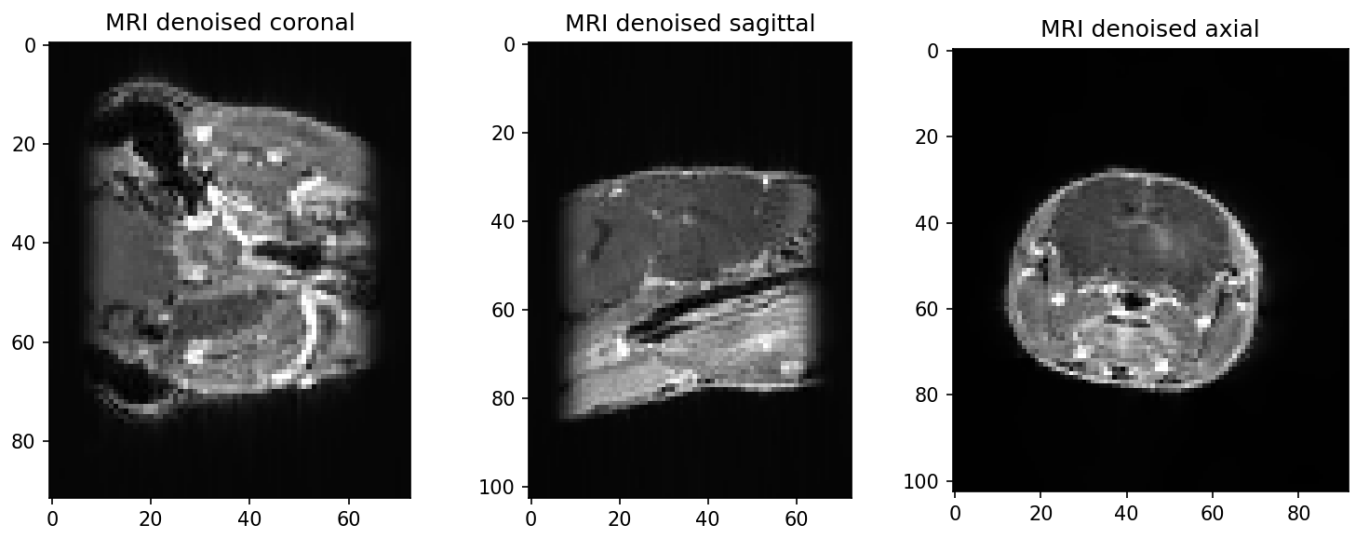


Figure 4.10: Denoised MRI image, Timepoint:Week_07, Sequence type: T1

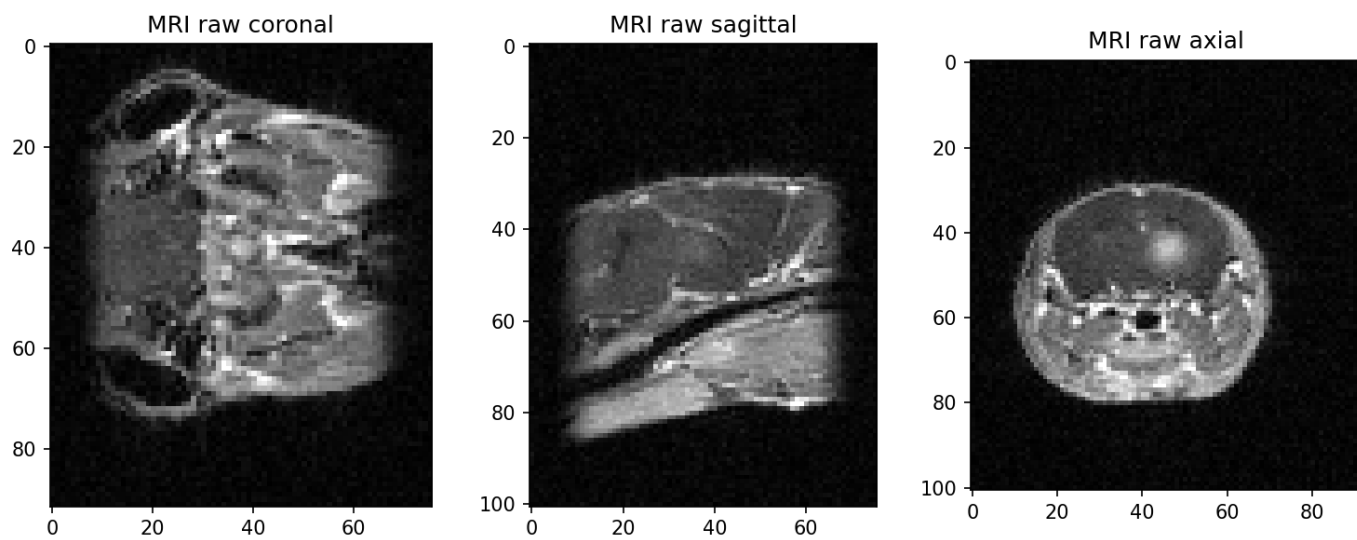


Figure 4.11: Raw MRI image, Timepoint:Week_09, Sequence type: T1

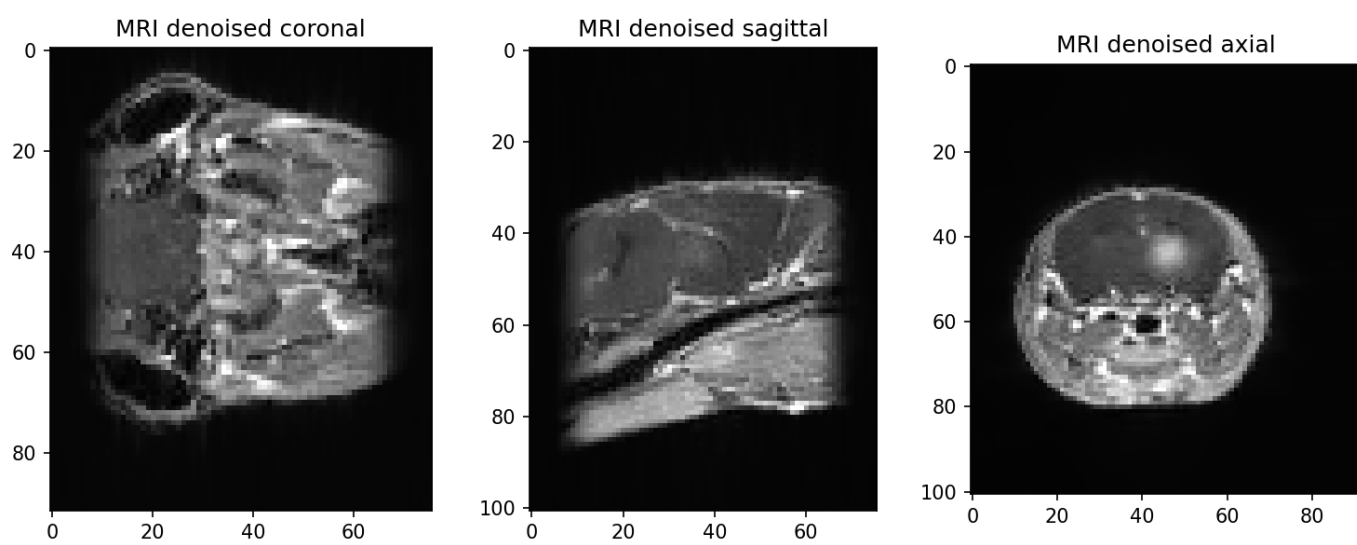


Figure 4.12: Denoised MRI image, Timepoint:Week_09, Sequence type: T1

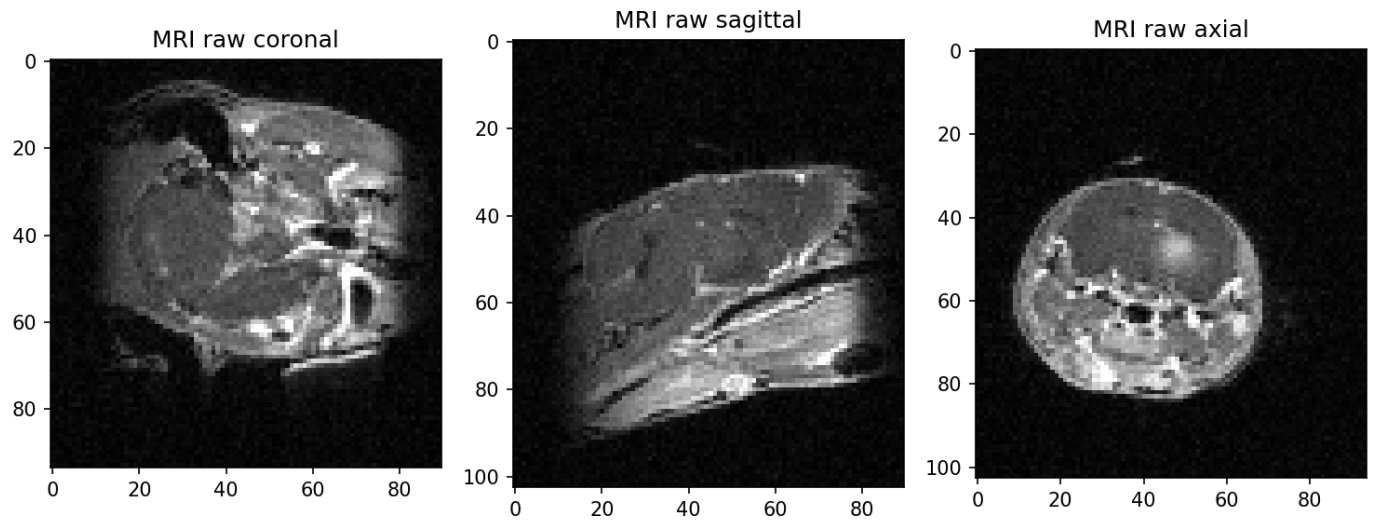


Figure 4.13: Raw MRI image, Timepoint:Week_11, Sequence type: T1

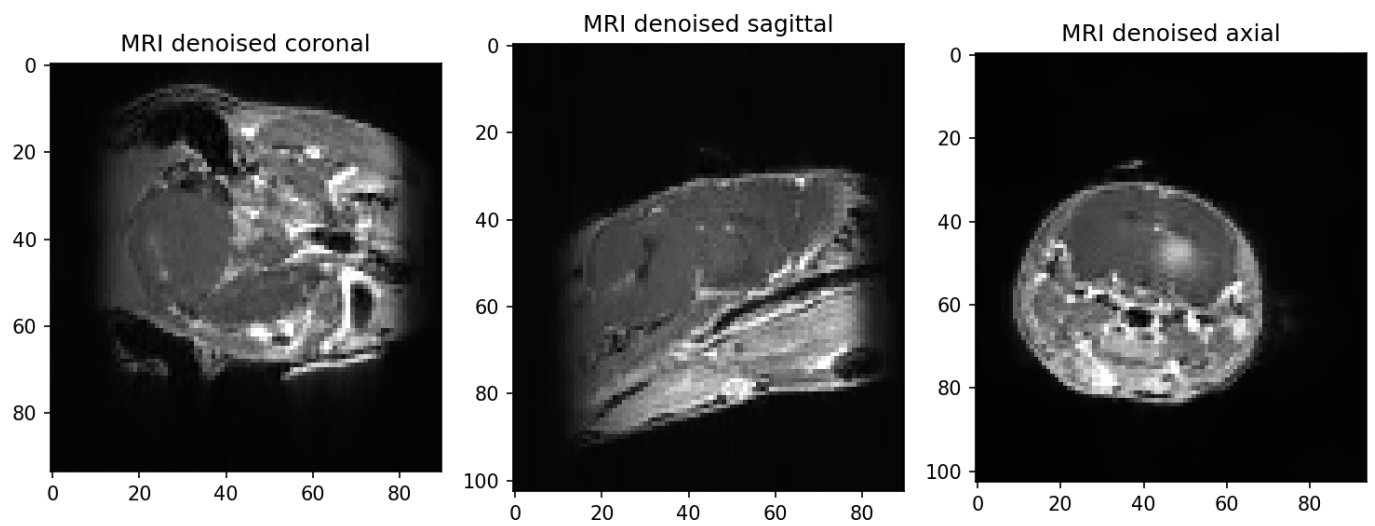


Figure 4.14: Denoised MRI image, Timepoint:Week_11, Sequence type: T1

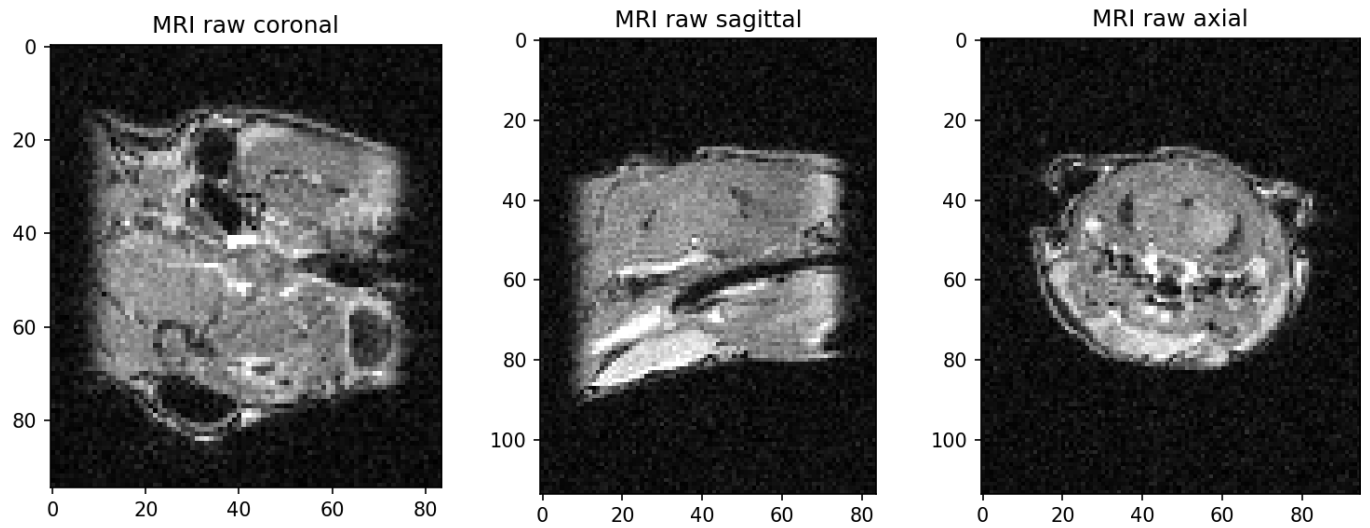


Figure 4.15: Raw MRI image, Timepoint:Week_13, Sequence type: T1

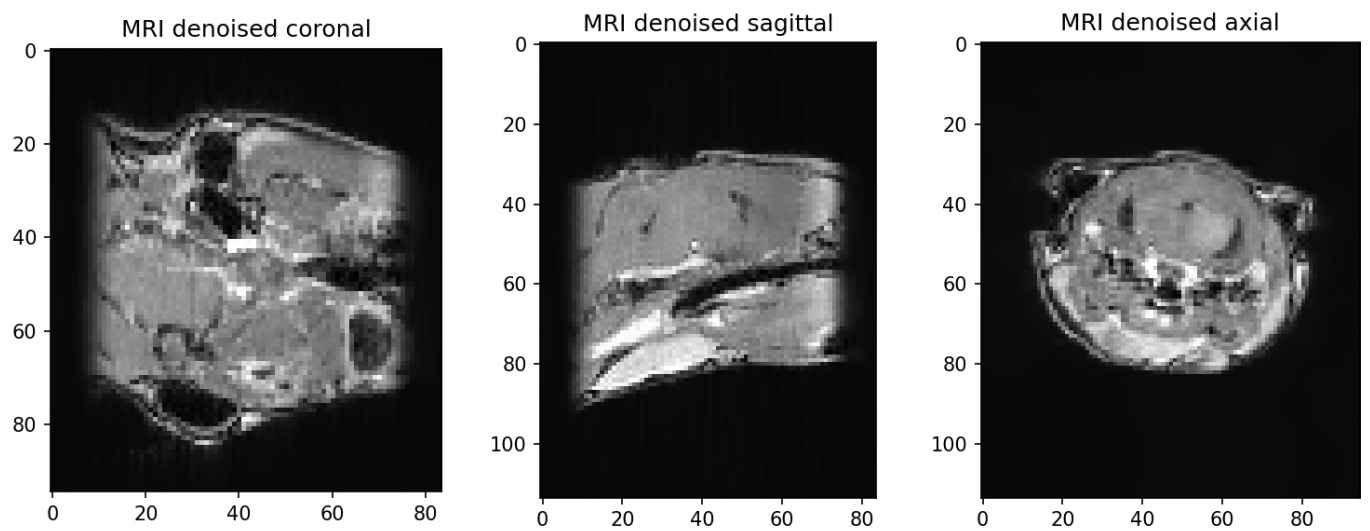


Figure 4.16: Denoised MRI image, Timepoint:Week_13, Sequence type: T1

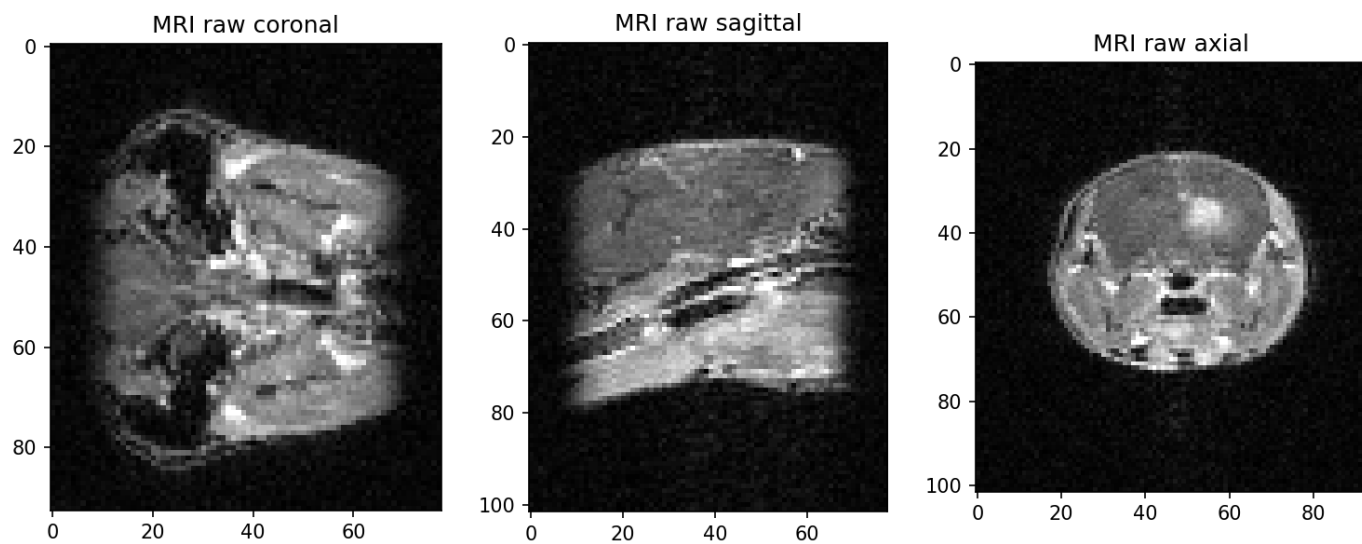


Figure 4.17: Raw MRI image, Timepoint:Week_15, Sequence type: T1

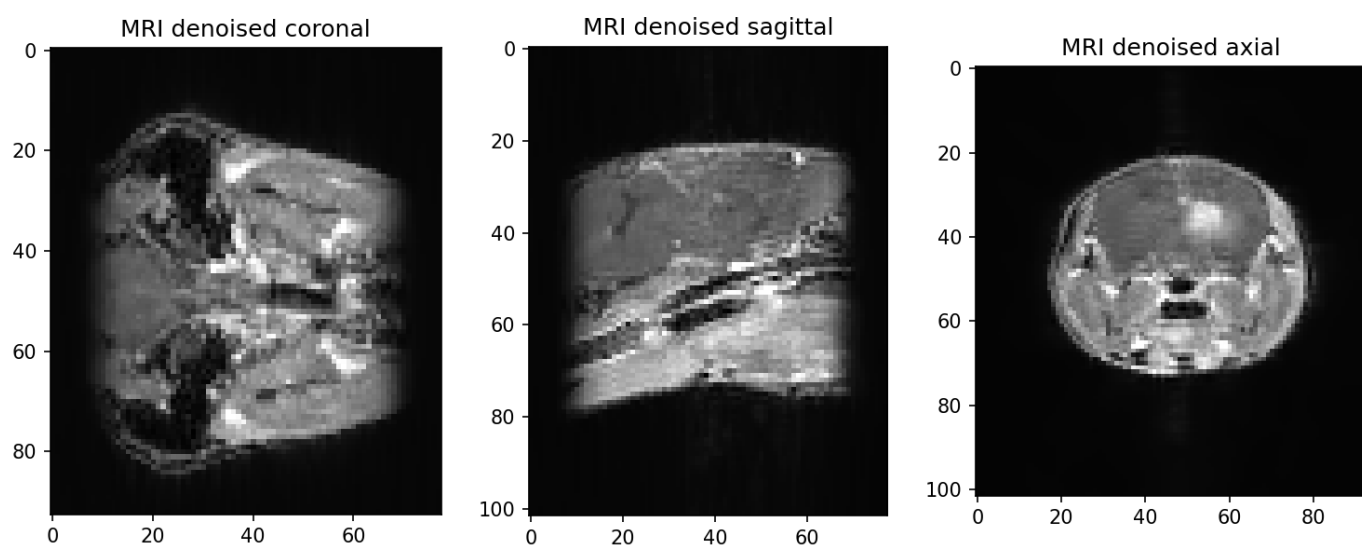


Figure 4.18: Denoised MRI image, Timepoint:Week_15, Sequence type: T1

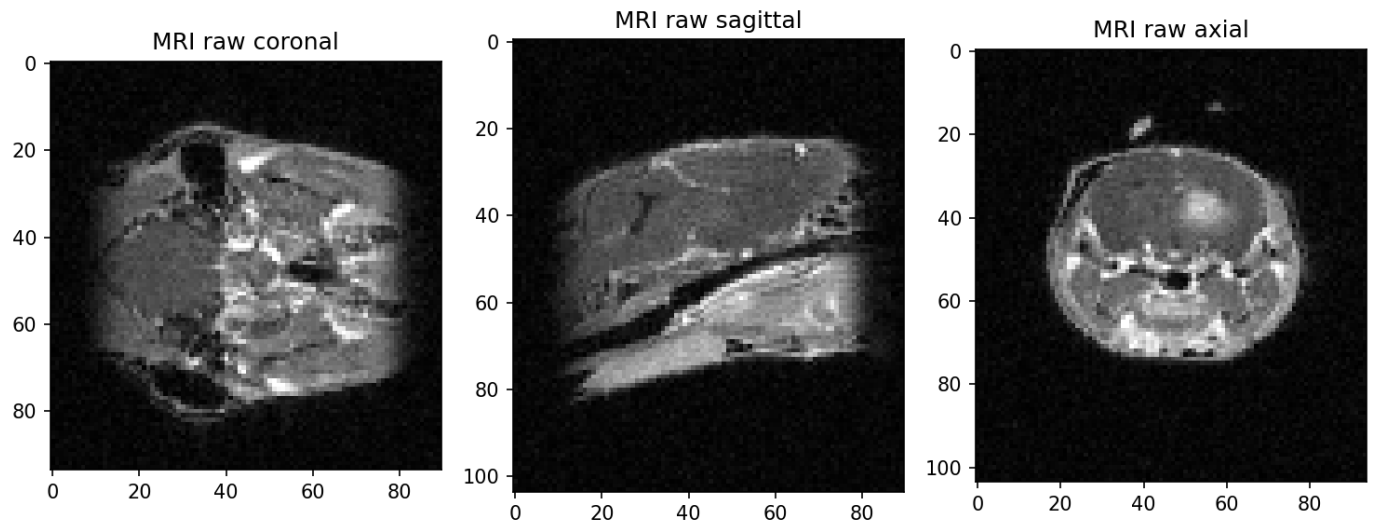


Figure 4.19: Raw MRI image, Timepoint:Week_16, Sequence type: T1

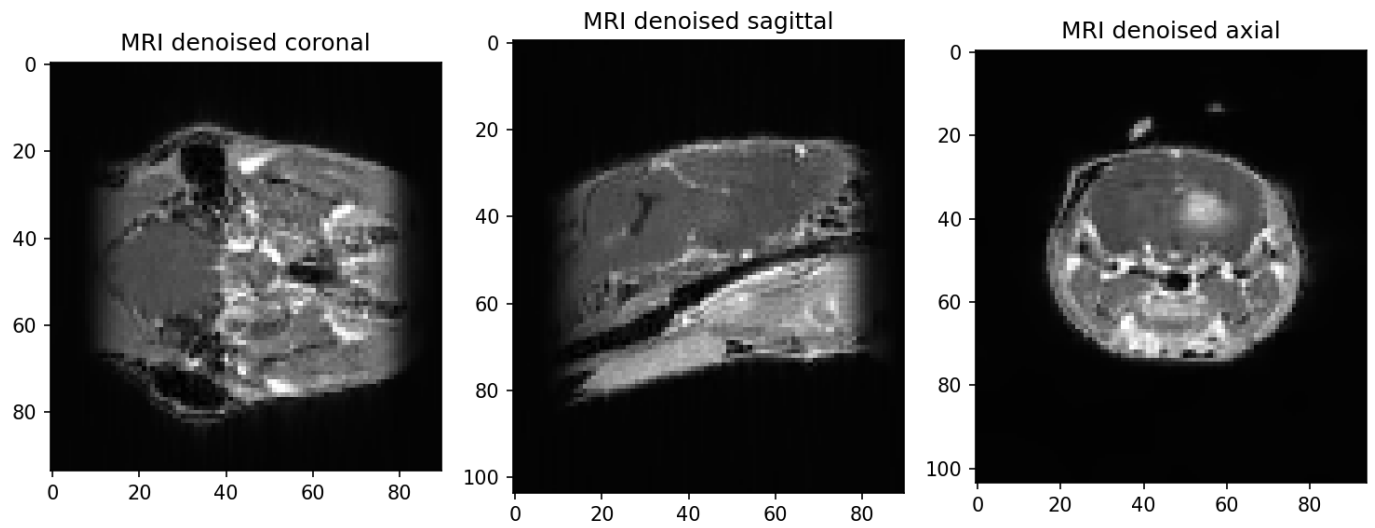


Figure 4.20: Denoised MRI image, Timepoint:Week_16, Sequence type: T1

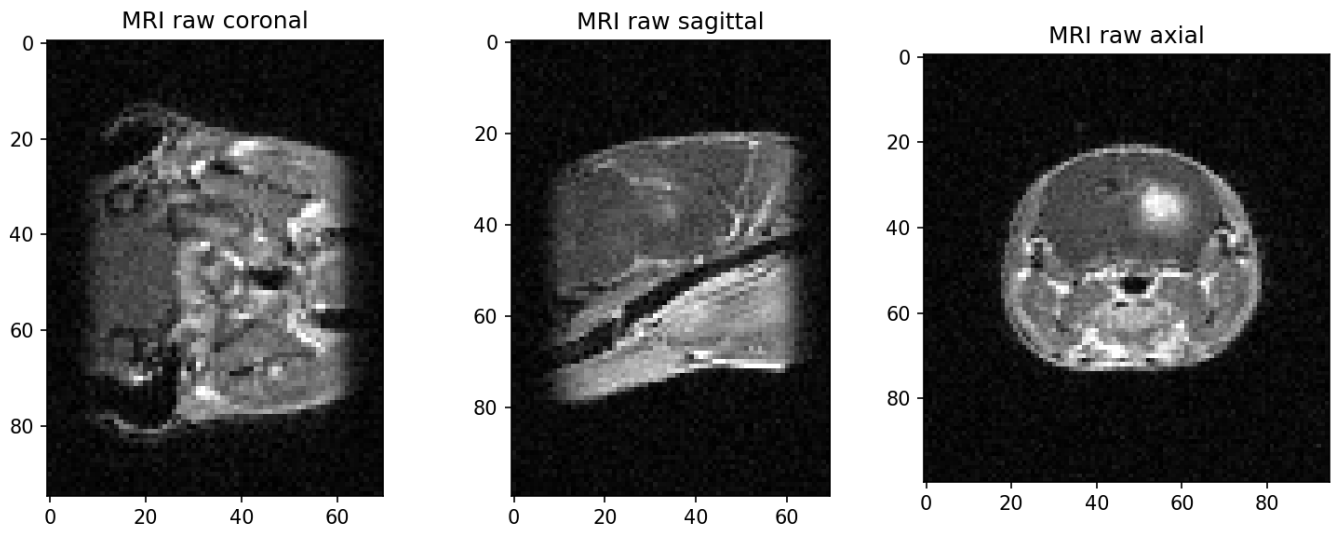


Figure 4.21: Raw MRI image, Timepoint:Week_25, Sequence type: T1

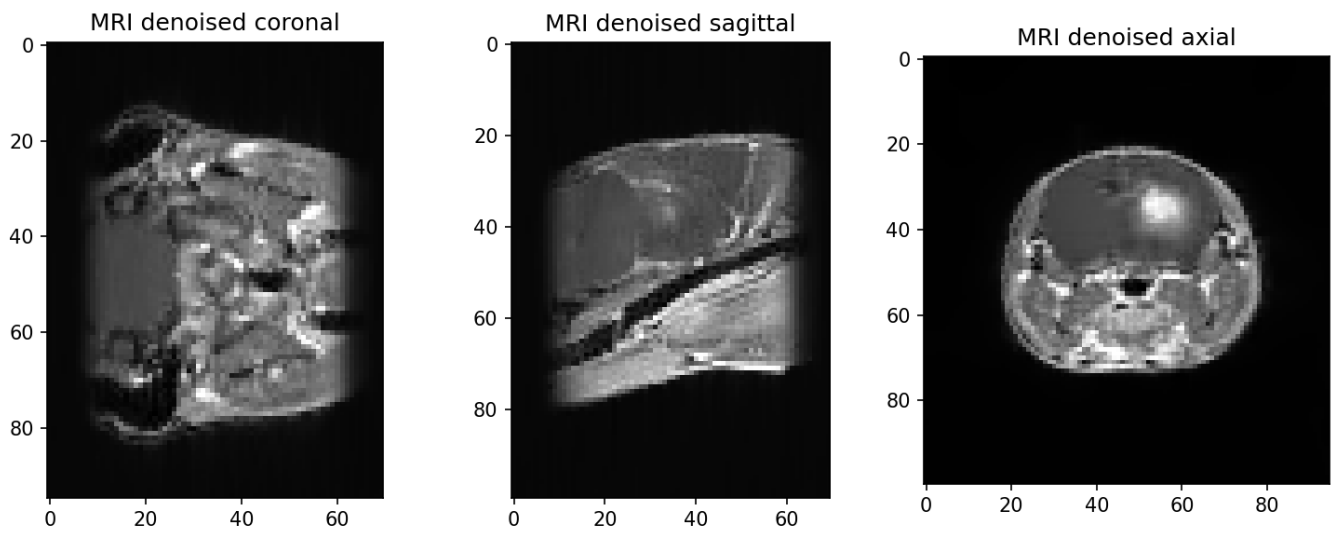


Figure 4.22: Denoised MRI image, Timepoint:Week_25, Sequence type: T1

4.1.2 Sequence type: T2

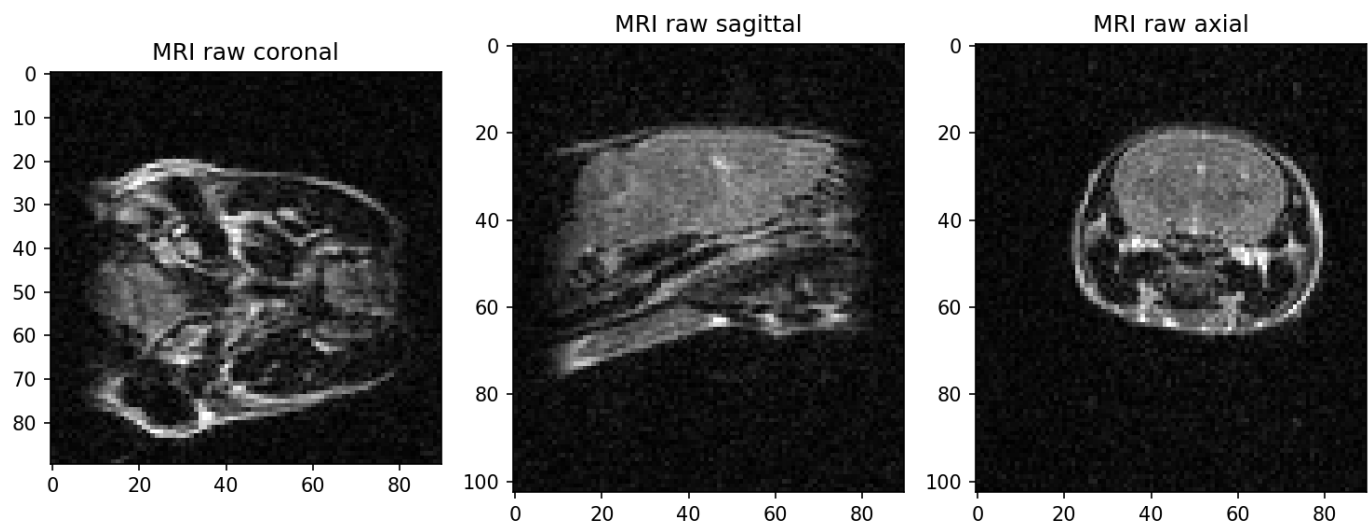


Figure 4.23: Raw MRI image, Timepoint:Week_00, Sequence type: T2

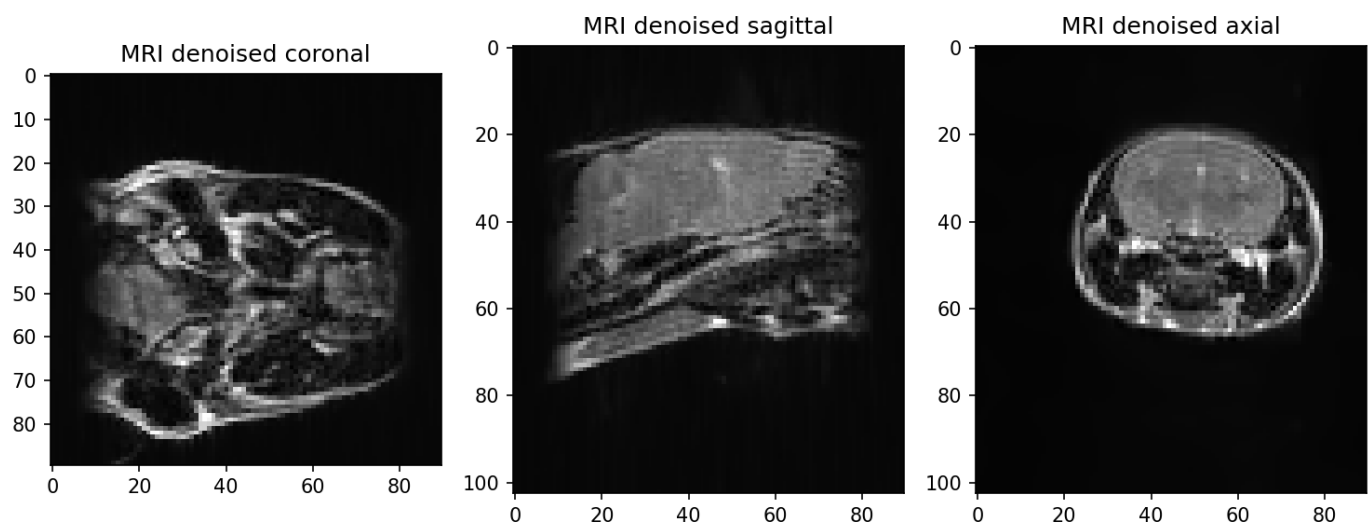


Figure 4.24: Denoised MRI image, Timepoint:Week_00, Sequence type: T2

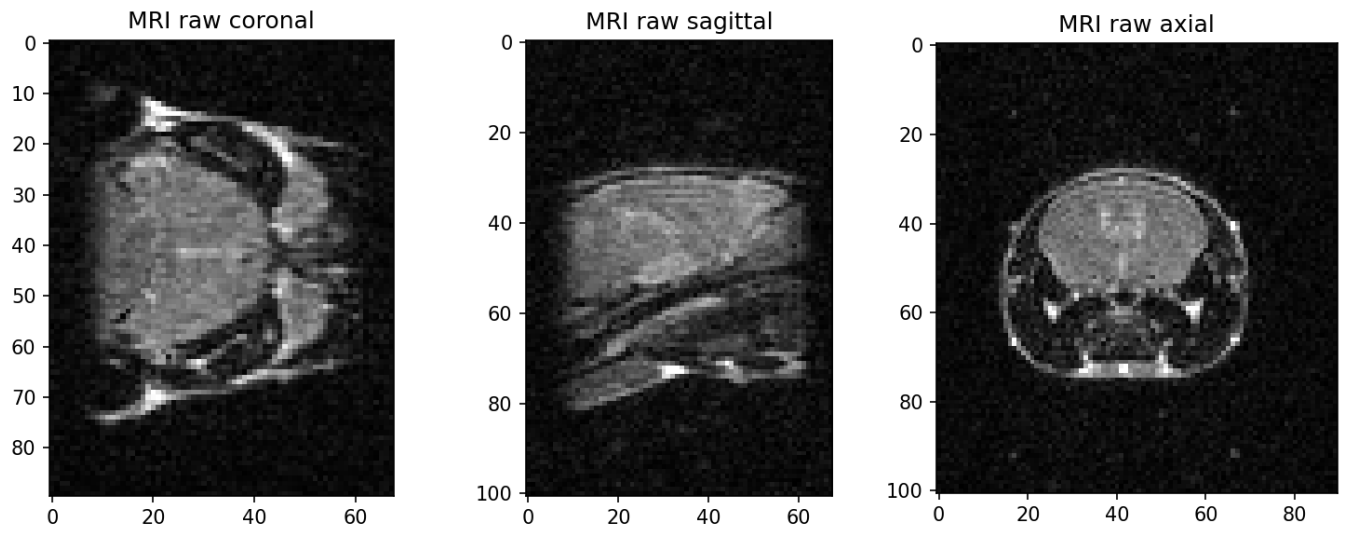


Figure 4.25: Raw MRI image, Timepoint:Week_05, Sequence type: T2

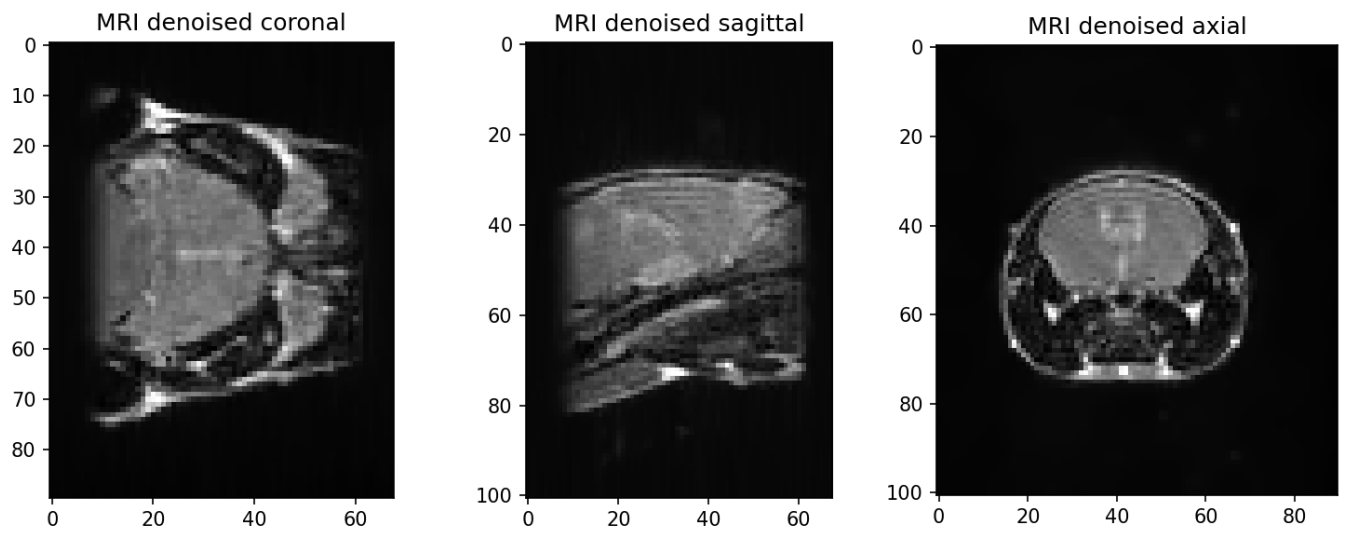


Figure 4.26: Denoised MRI image, Timepoint:Week_05, Sequence type: T2

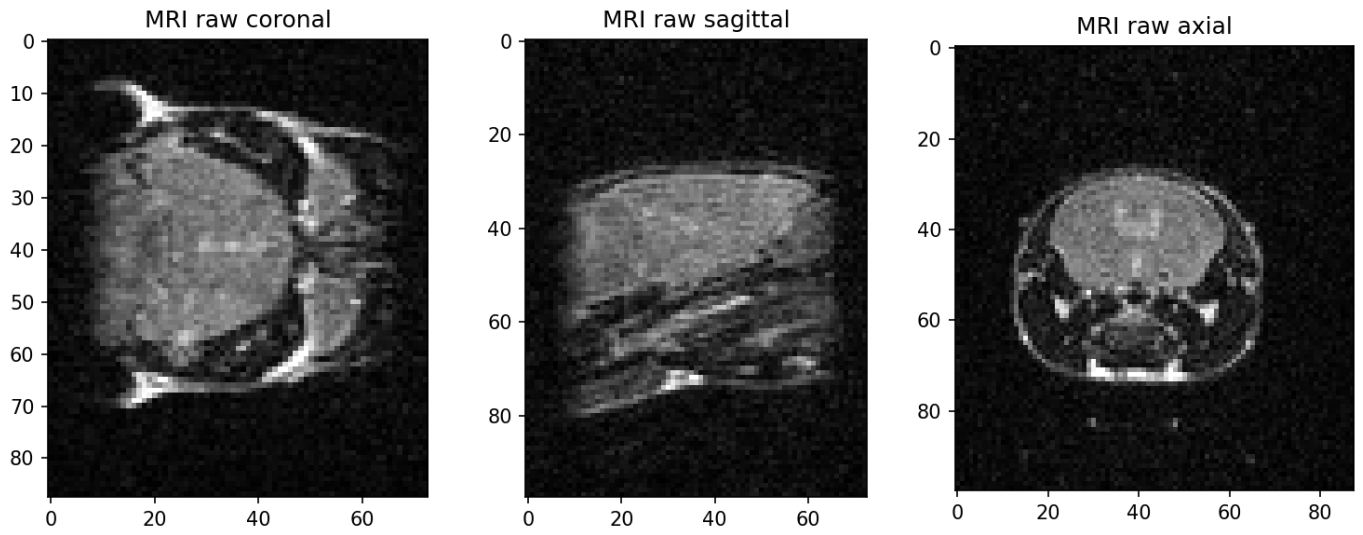


Figure 4.27: Raw MRI image, Timepoint:Week_07, Sequence type: T2

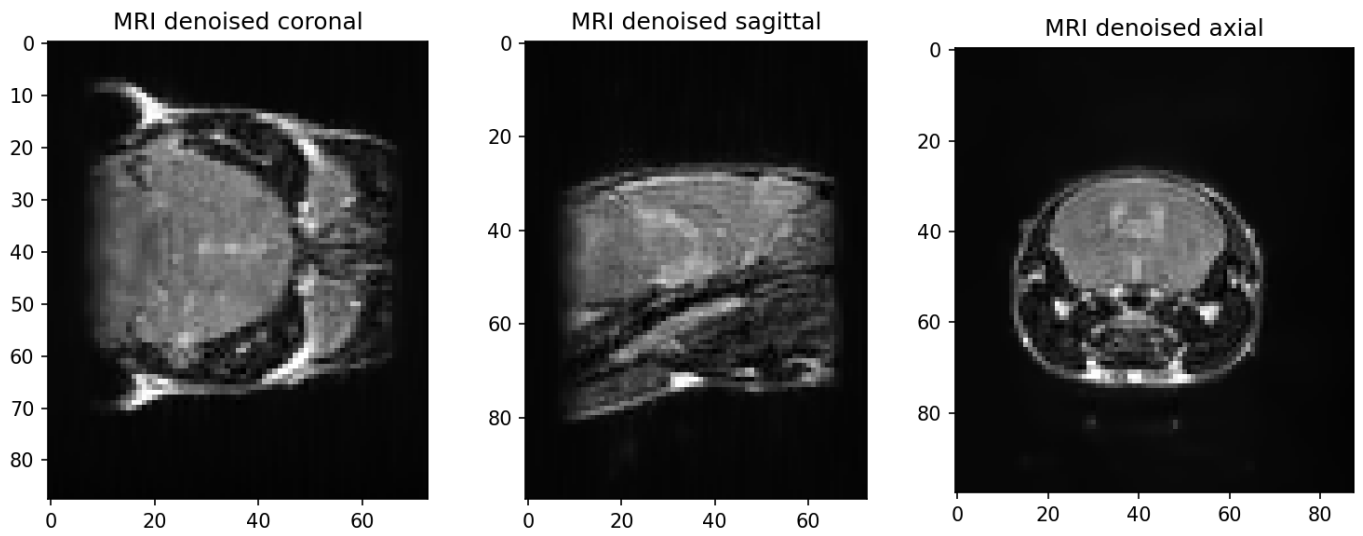


Figure 4.28: Denoised MRI image, Timepoint:Week_07, Sequence type: T2

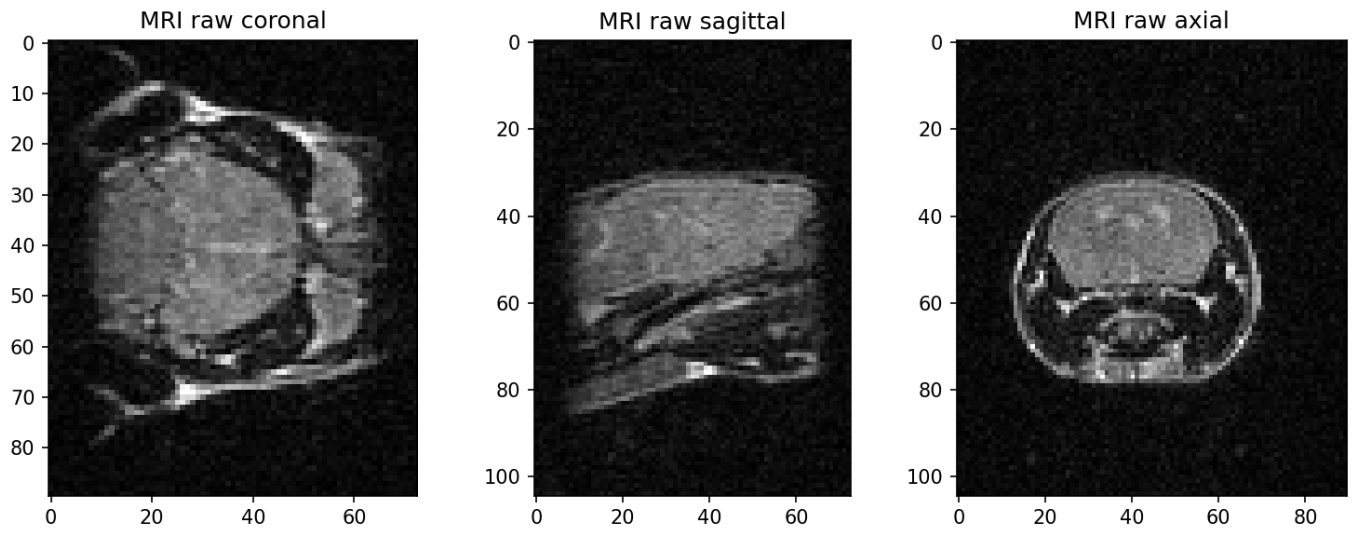


Figure 4.29: Raw MRI image, Timepoint:Week_09, Sequence type: T2

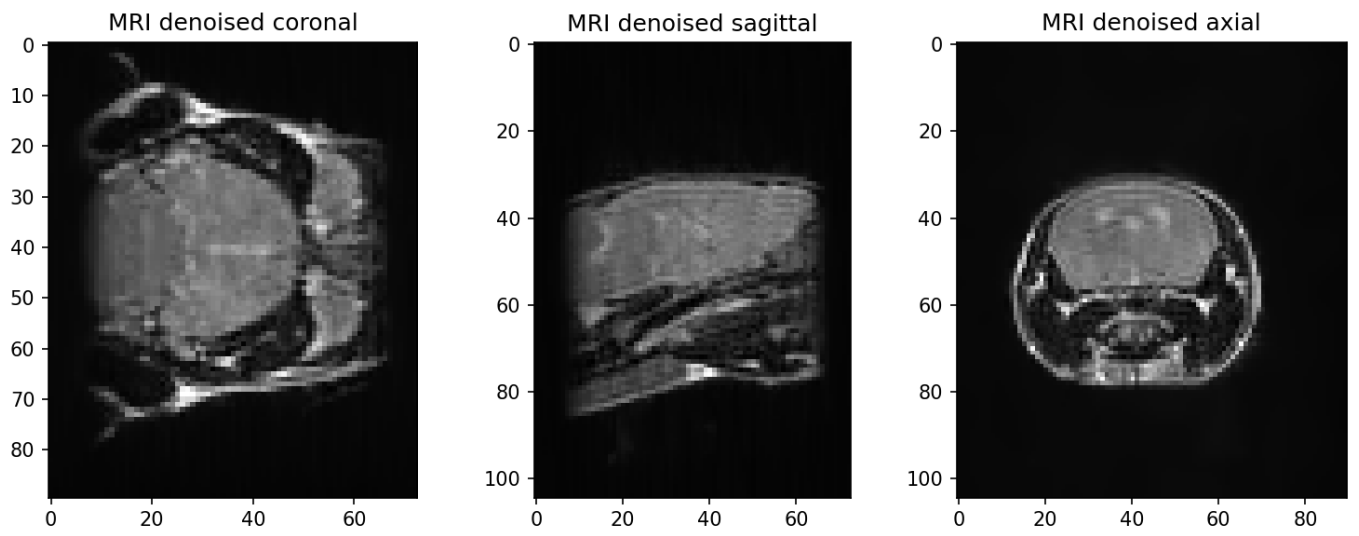


Figure 4.30: Denoised MRI image, Timepoint:Week_09, Sequence type: T2

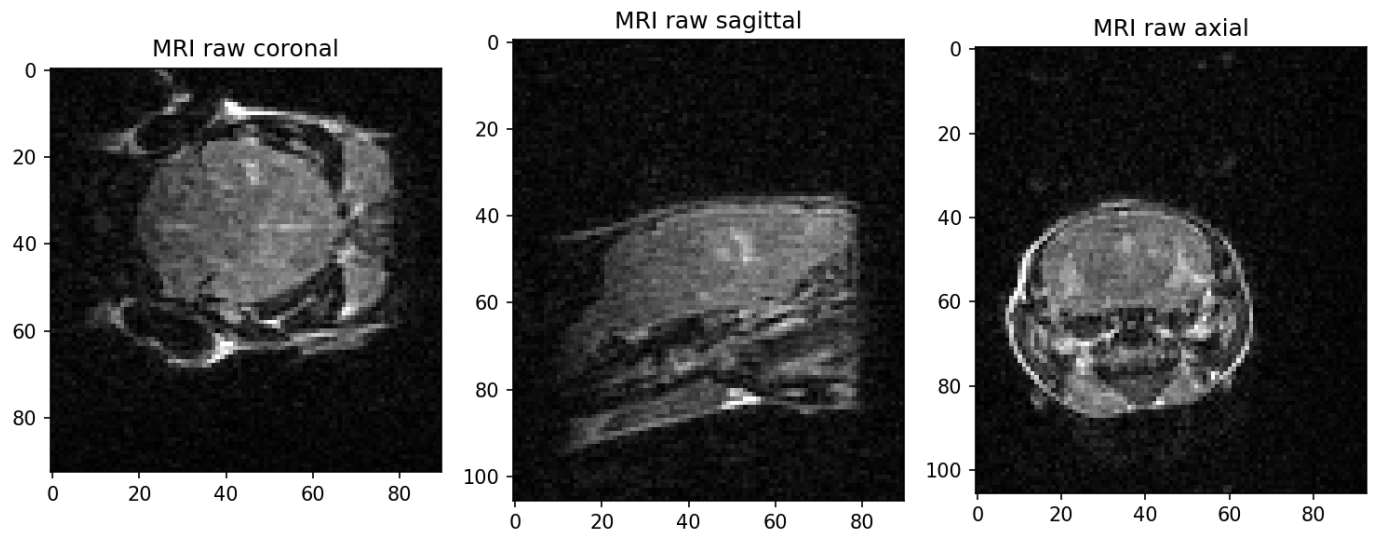


Figure 4.31: Raw MRI image, Timepoint:Week_11, Sequence type: T2

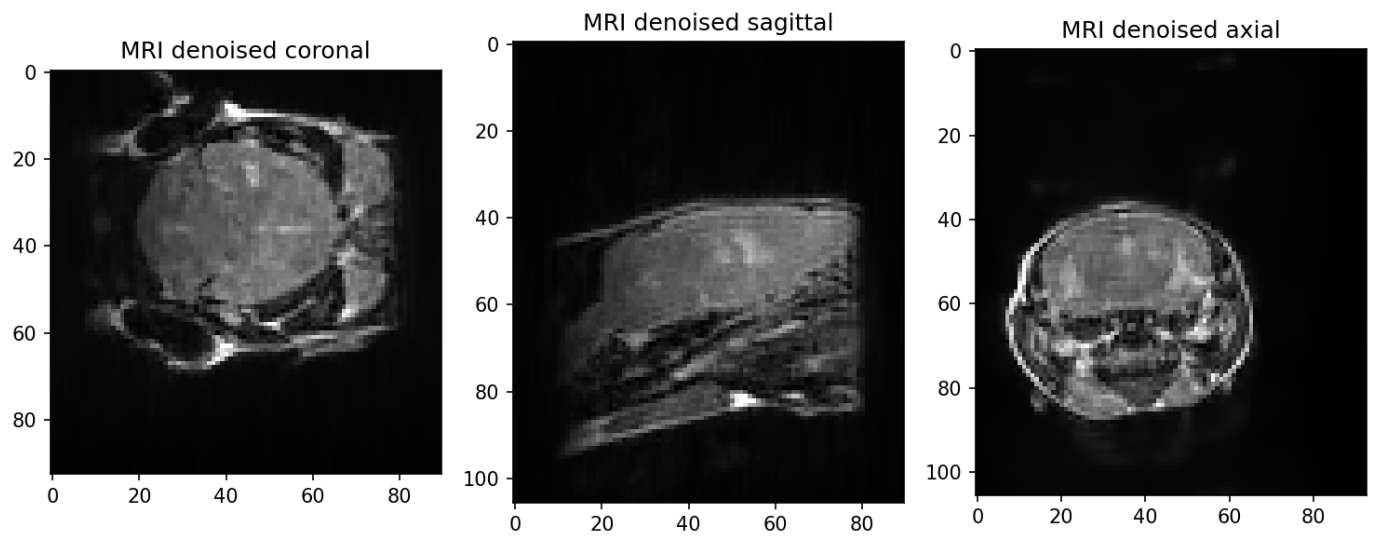


Figure 4.32: Denoised MRI image, Timepoint:Week_11, Sequence type: T2

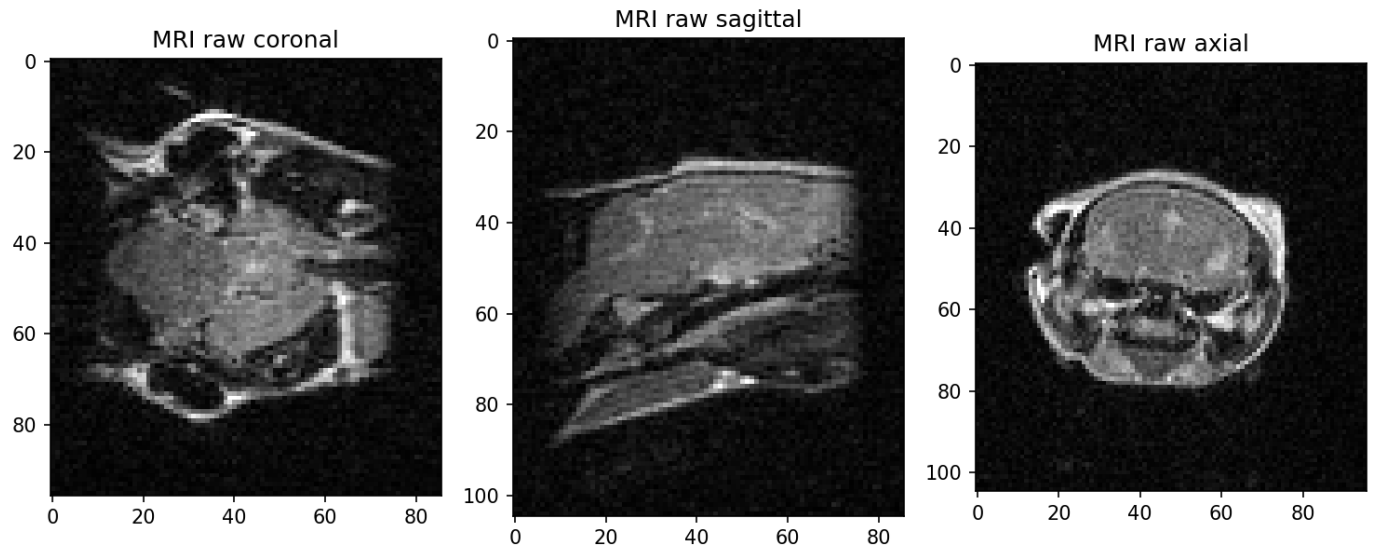


Figure 4.33: Raw MRI image, Timepoint:Week_13, Sequence type: T2

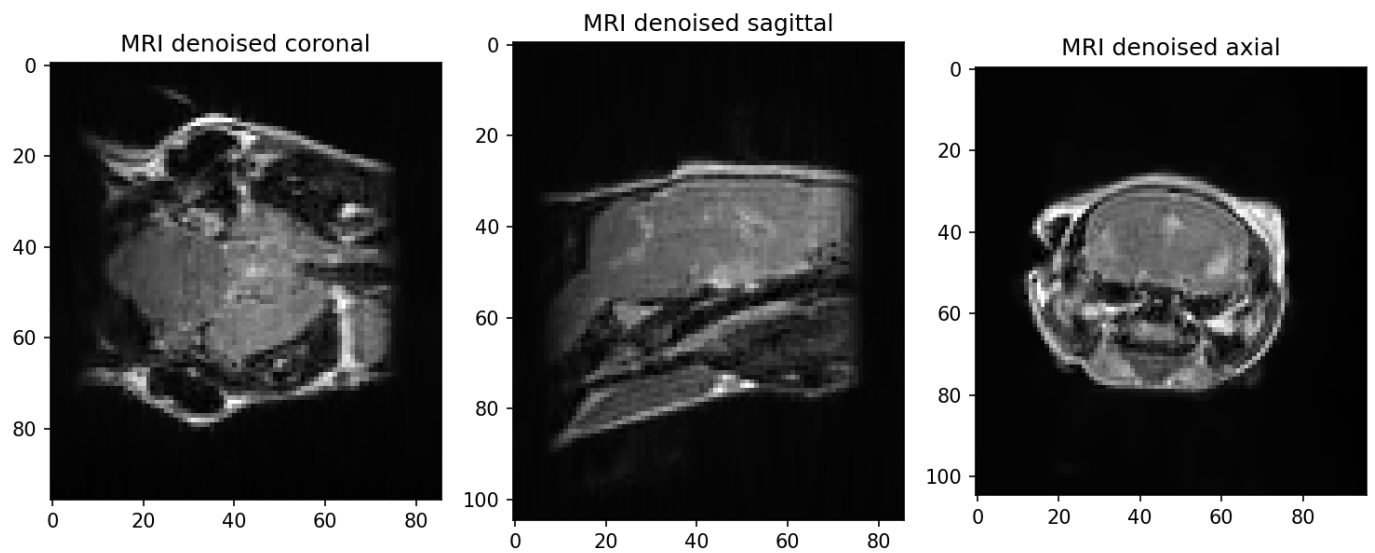


Figure 4.34: Denoised MRI image, Timepoint:Week_13, Sequence type: T2

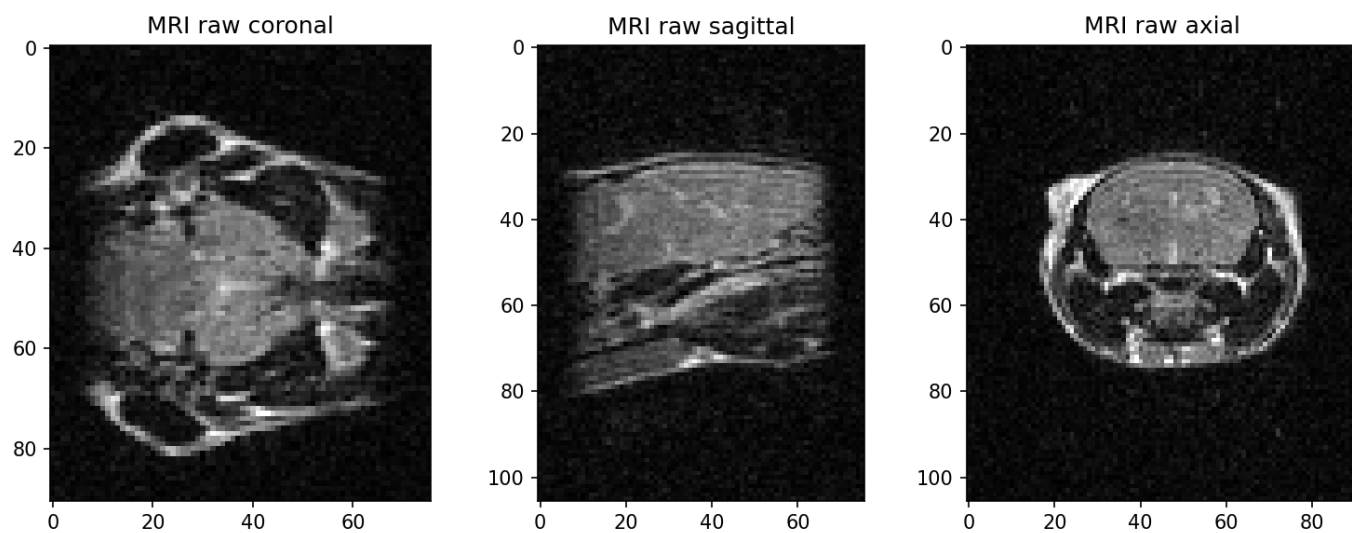


Figure 4.35: Raw MRI image, Timepoint:Week_15, Sequence type: T2

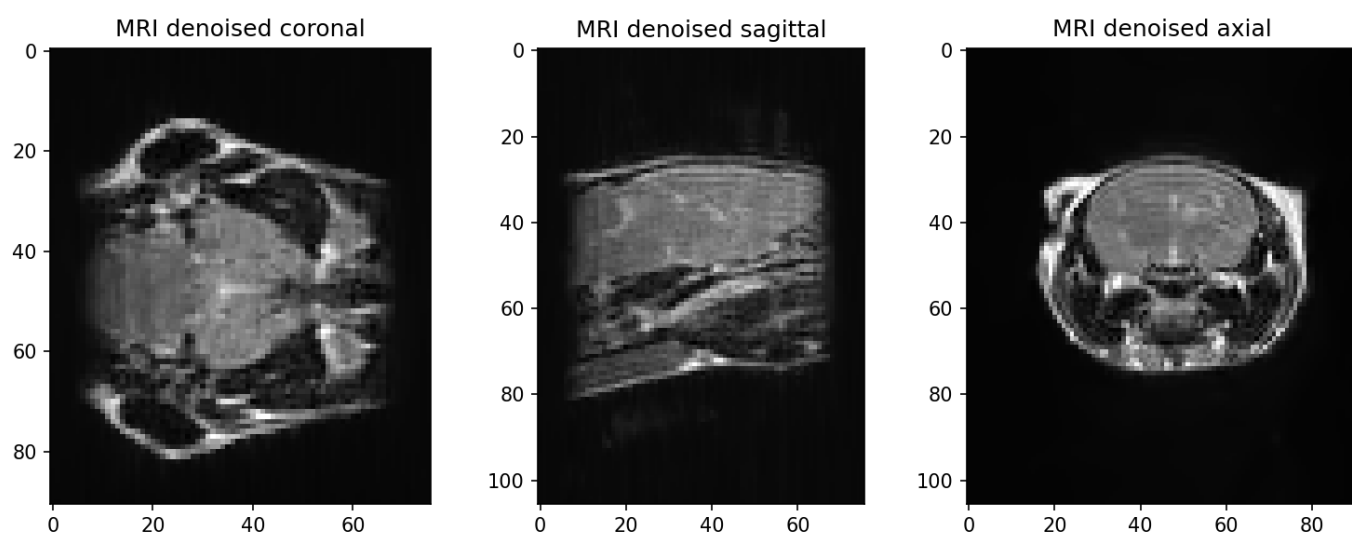


Figure 4.36: Denoised MRI image, Timepoint:Week_15, Sequence type: T2

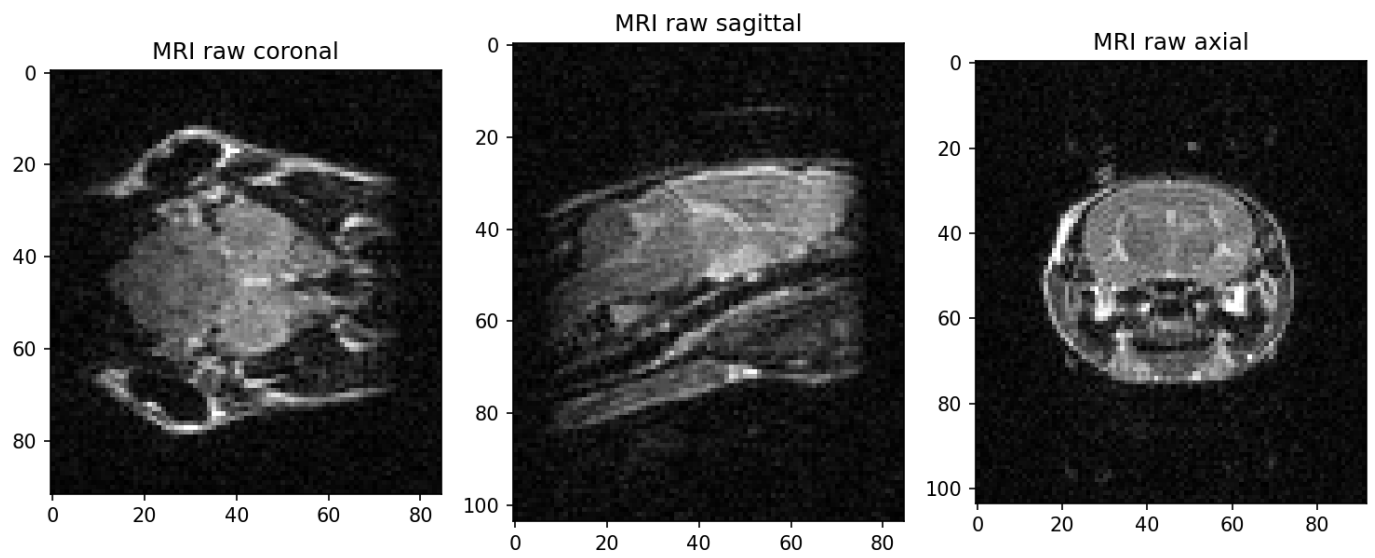


Figure 4.37: Raw MRI image, Timepoint:Week_16, Sequence type: T2

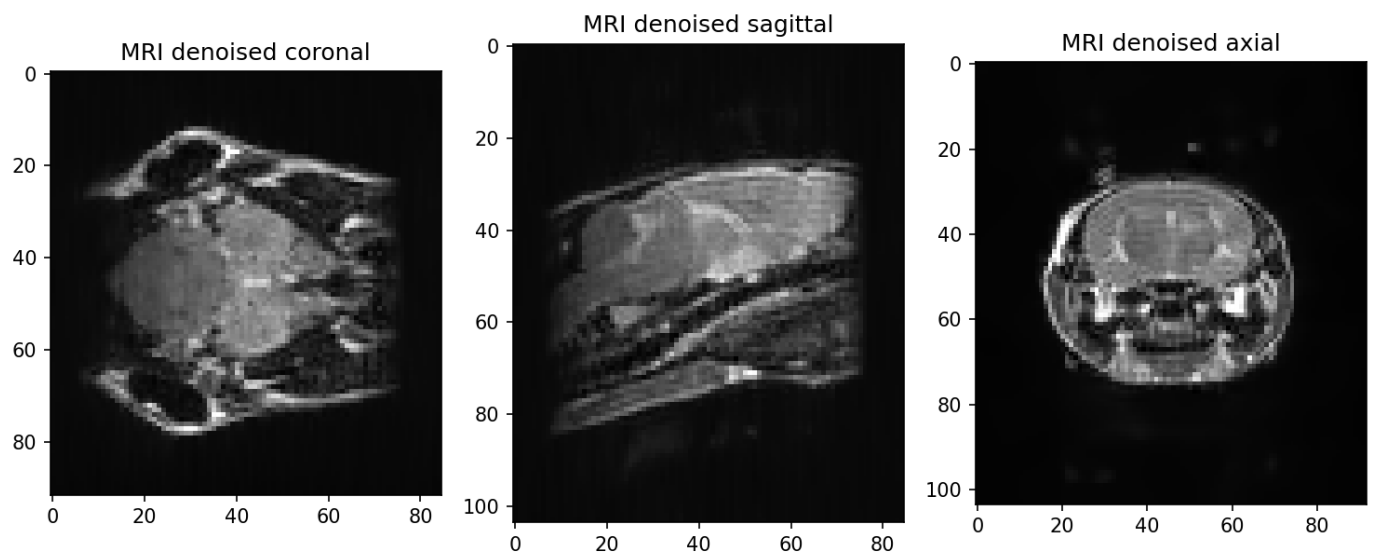


Figure 4.38: Denoised MRI image, Timepoint:Week_16, Sequence type: T2

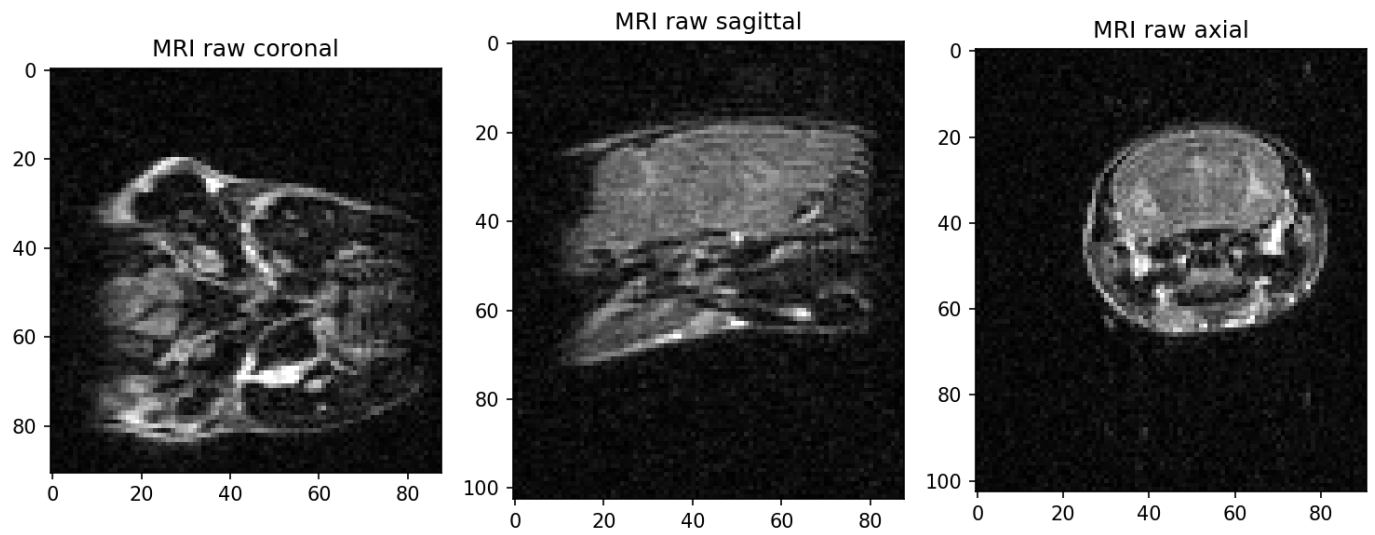


Figure 4.39: Raw MRI image, Timepoint:Week_20, Sequence type: T2

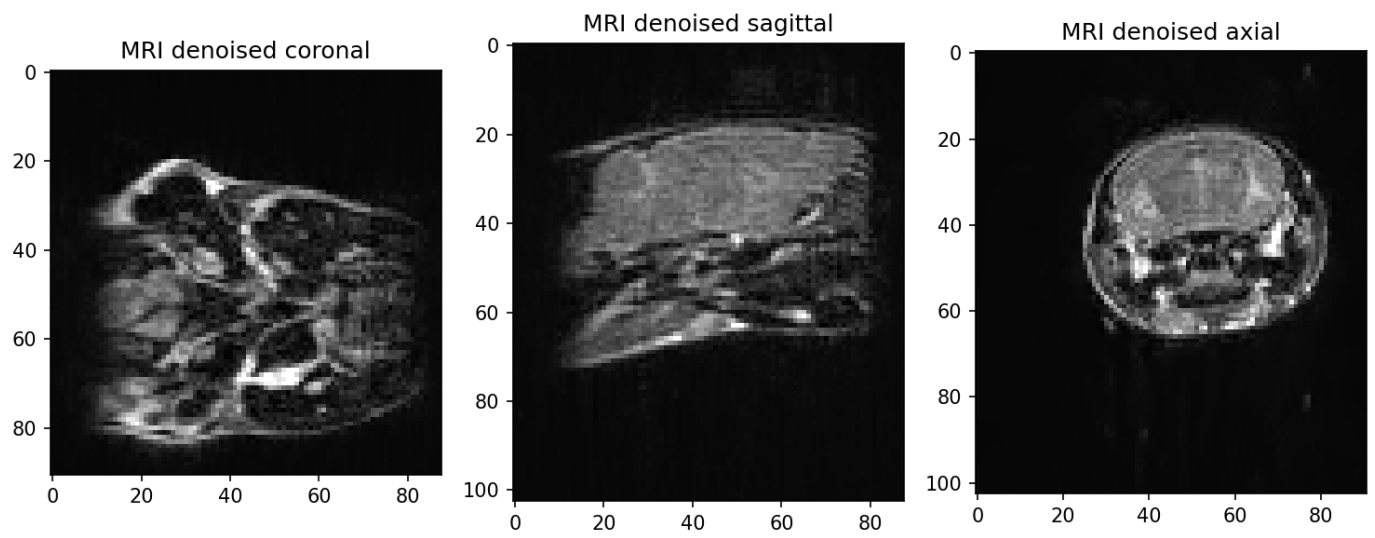


Figure 4.40: Denoised MRI image, Timepoint:Week_20, Sequence type: T2

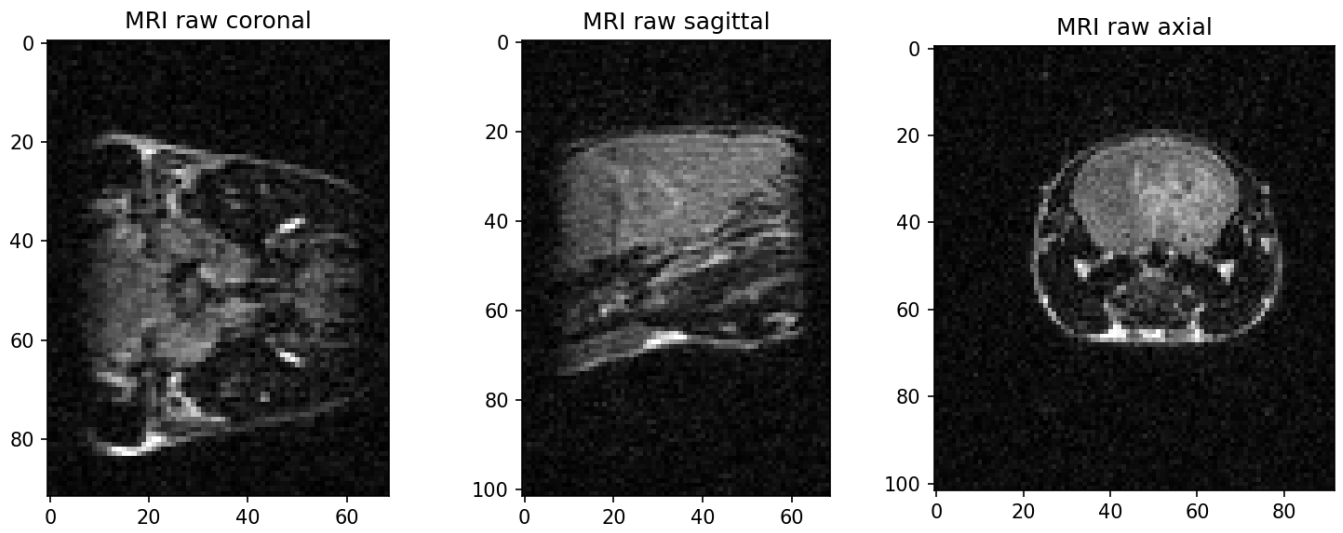


Figure 4.41: Raw MRI image, Timepoint:Week_25, Sequence type: T2

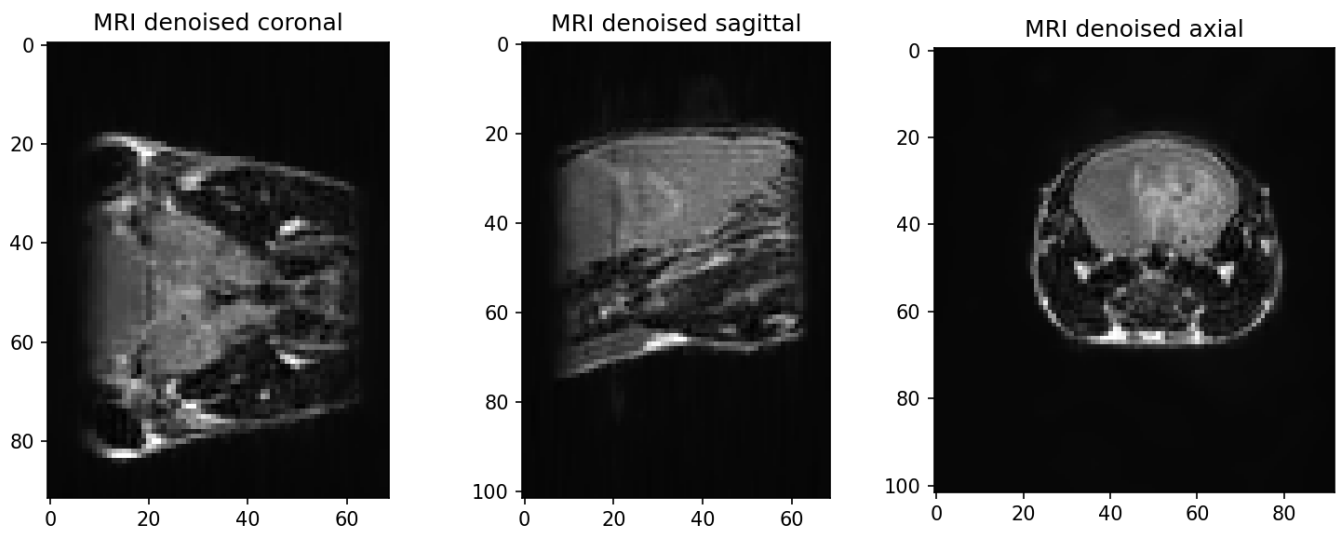


Figure 4.42: Denoised MRI image, Timepoint:Week_25, Sequence type: T2

4.2 Registration (timepoints)

4.2.1 Sequence type: T1

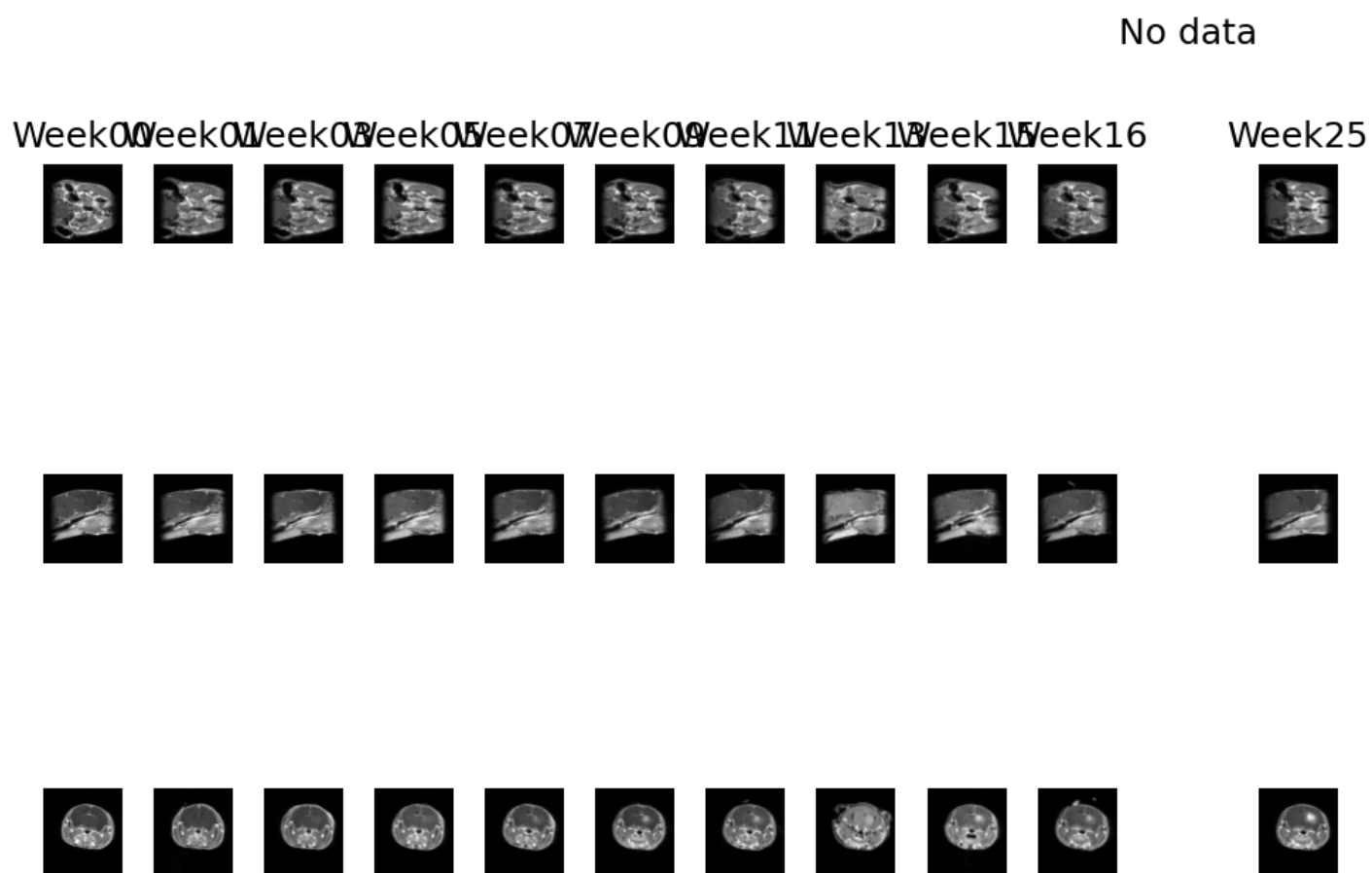


Figure 4.43: Gallery of registered MRI images , Sequence type: T1

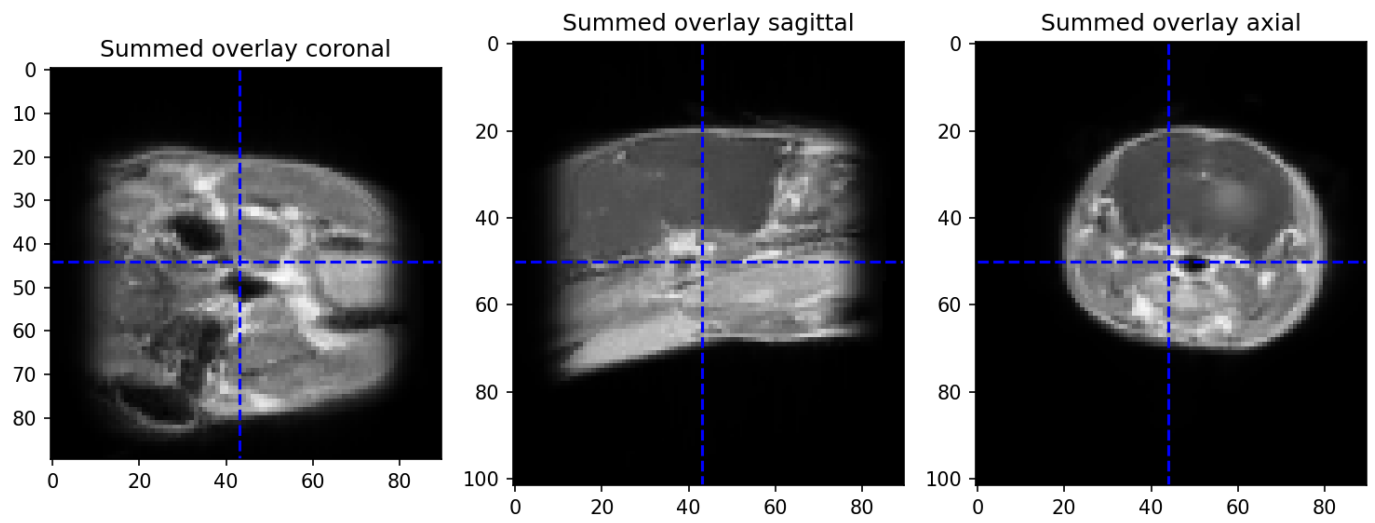


Figure 4.44: Summed overlay of registered MRI images , Sequence type: T1

4.2.2 Sequence type: T2

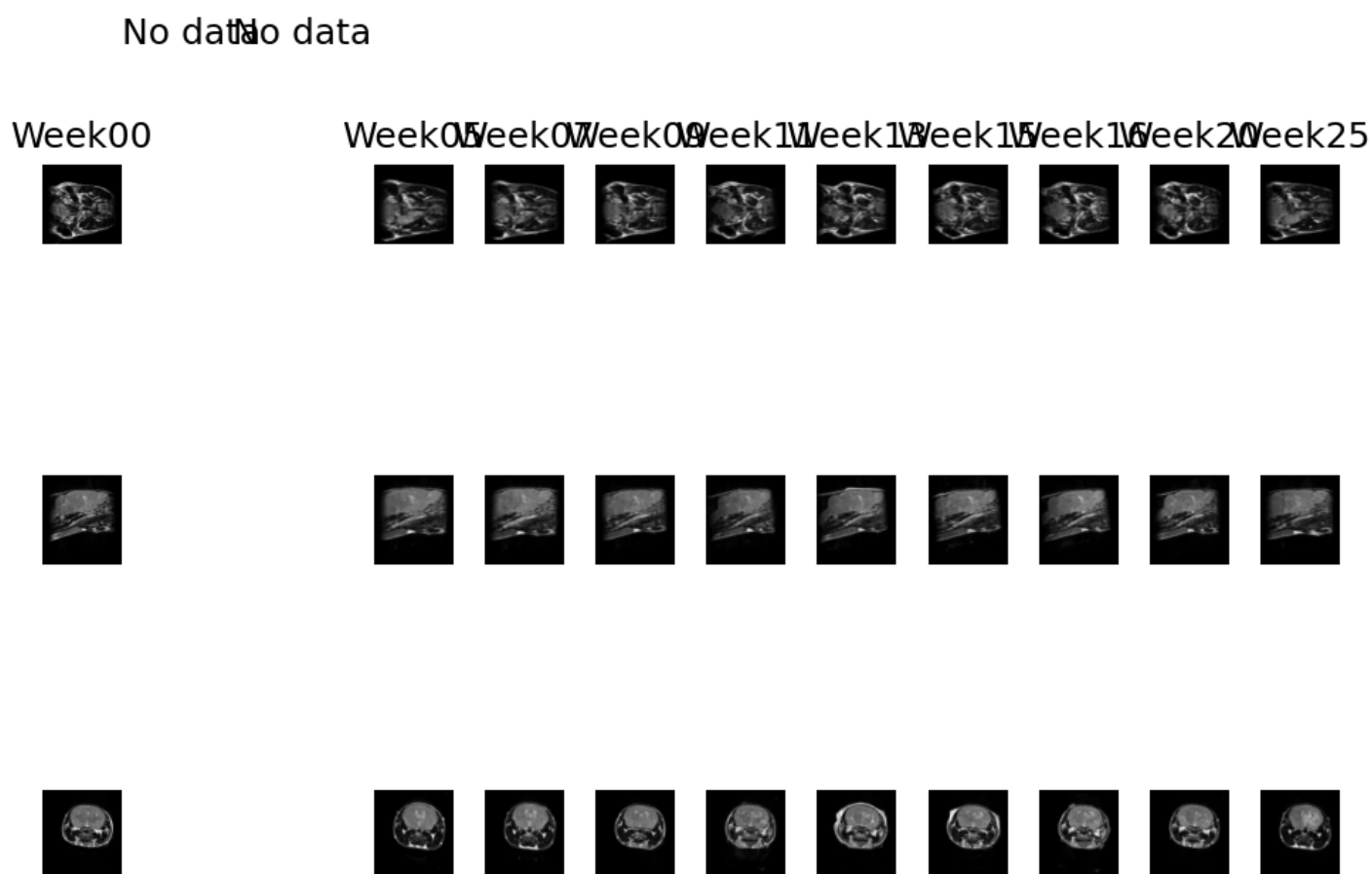


Figure 4.45: Gallery of registered MRI images , Sequence type: T2

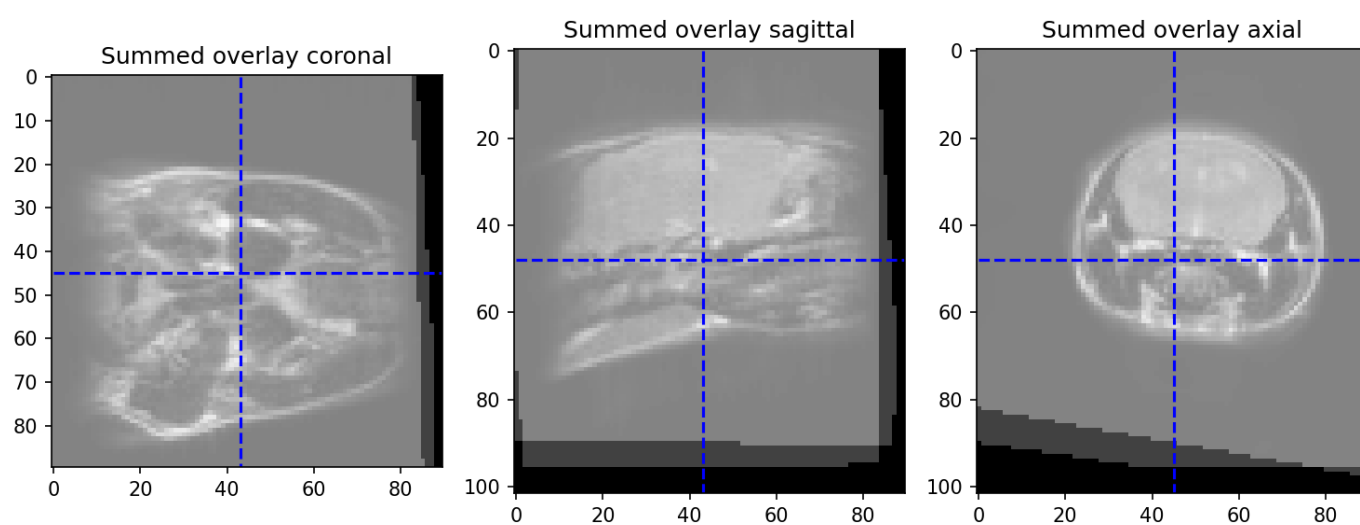


Figure 4.46: Summed overlay of registered MRI images , Sequence type: T2

4.3 Warping to CBCT

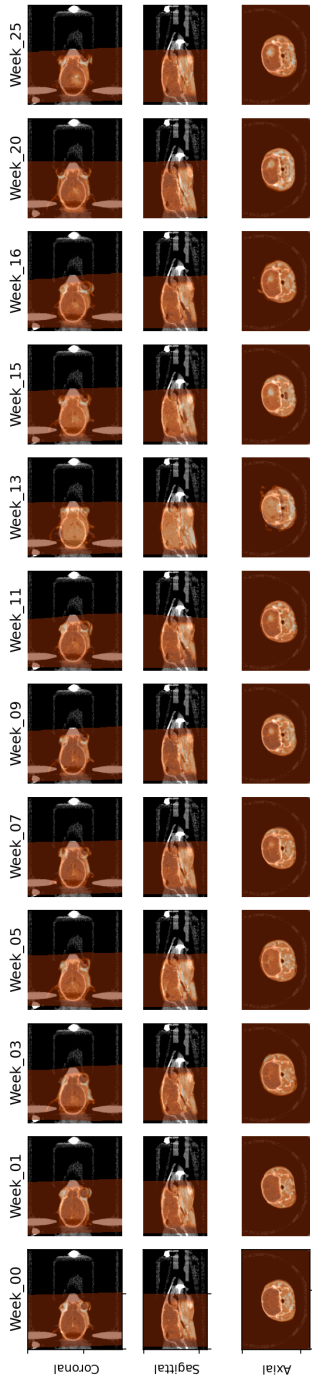


Figure 4.47: Gallery of CBCT (gray) and warped MRI images (orange) , Sequence type: T1

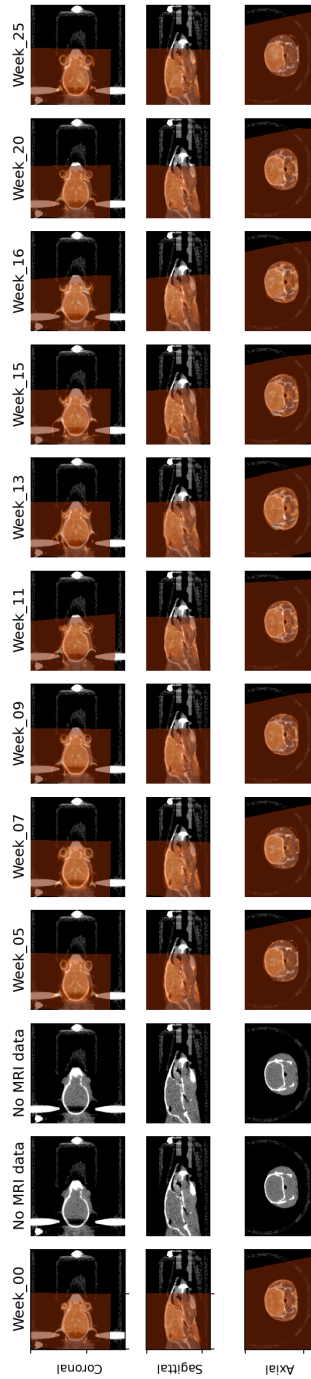


Figure 4.48: Gallery of CBCT (gray) and warped MRI images (orange) , Sequence type: T2

5 Histology image data

5.1 Bundle registration

Number of section locations:27

Stainings for this sample:

- NOK: NeuN, OSP, Ki-67 and DAPI
- GNI: GFAP, Nestin, Iba1 and DAPI
- HE: Hematoxylin & eosin staining

Note: Pairs of histochemical (e.g. HE) and immunofluorescent (e.g. GNI) images are registered with a contour-based technique, whereas pairs of immunofluorescent images (e.g. GNI and NOK) are registered with an intensity-based method. For the latter, the DAPI canal present in all immunofluorescent stainings serves as registration reference and is displayed in this overview.

5.1.1 0001_Scene_1

Raw images:

- P2A_B6_M2_GNI-0001-Scene-1.czi
- P2A_B6_M2_HE-0001-Scene-1.czi
- P2A_B6_M2_NOK-0001-Scene-1.czi

Registered stainings: 3/3

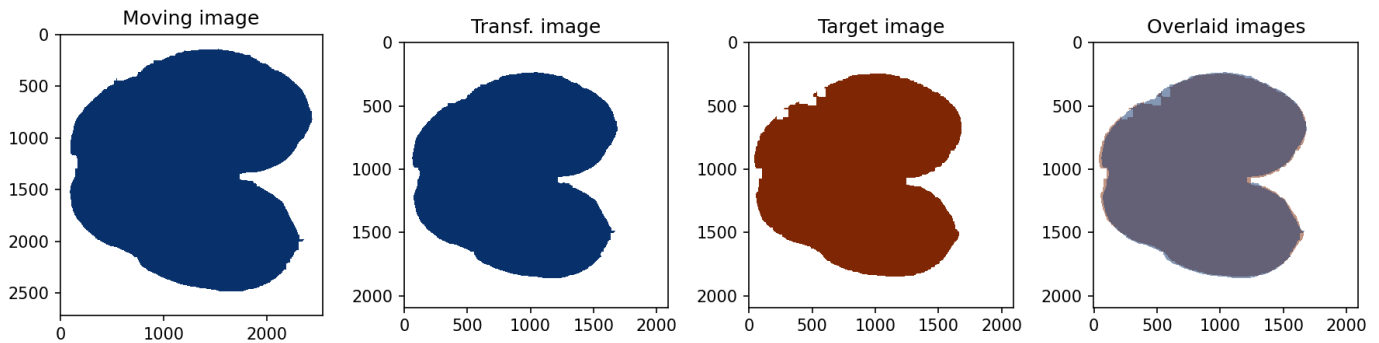


Figure 5.1: Results of registration of image P2A_B6_M2_HE-0001-Scene-1 (Moving image) to P2A_B6_M2_GNI-0001-Scene-1 (Target image)

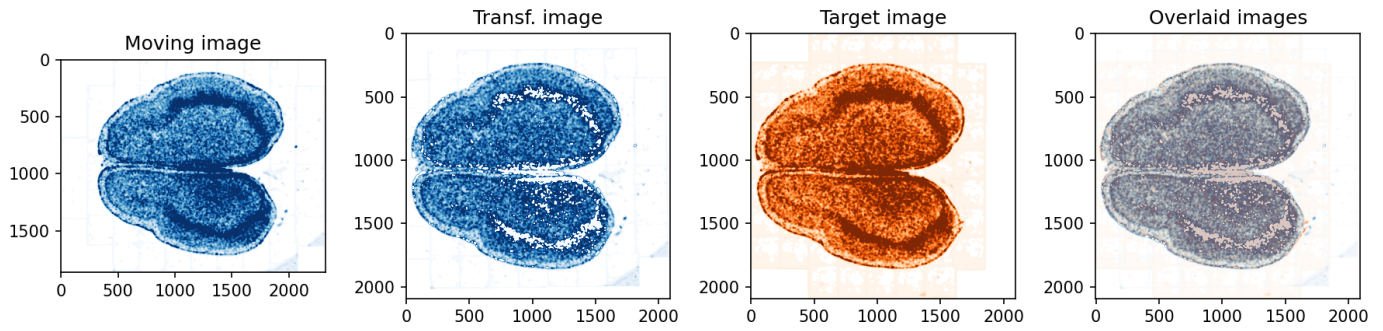


Figure 5.2: Results of registration of image P2A_B6_M2_NOK-0001-Scene-1 (Moving image) to P2A_B6_M2_GNI-0001-Scene-1 (Target image)

5.1.2 0001_Scene_2

Raw images:

- P2A_B6_M2_GNI-0001-Scene-2.czi
- P2A_B6_M2_HE-0001-Scene-2.czi
- P2A_B6_M2_NOK-0001-Scene-2.czi

Registered stainings: 3/3

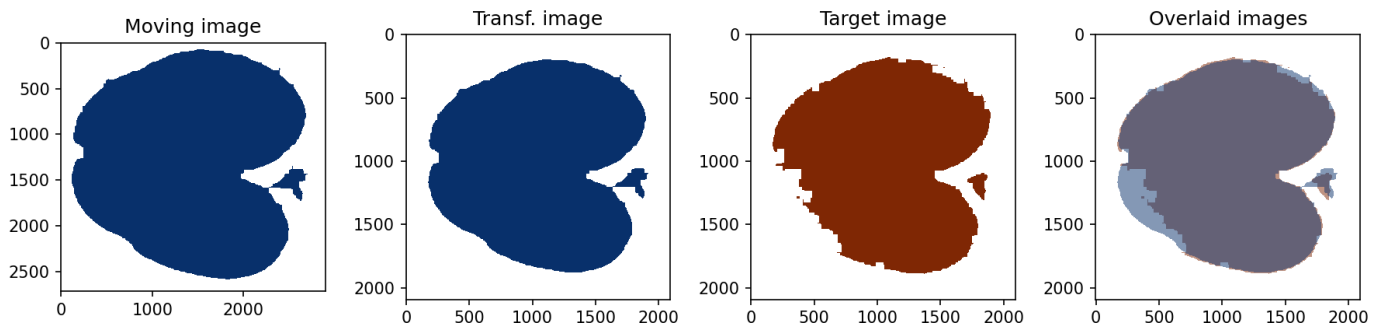


Figure 5.3: Results of registration of image P2A_B6_M2_HE-0001-Scene-2 (Moving image) to P2A_B6_M2_GNI-0001-Scene-2 (Target image)

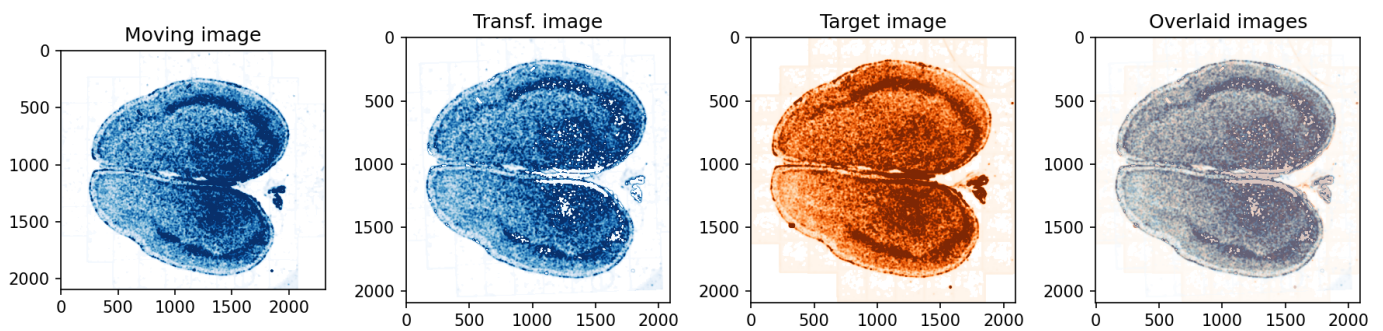


Figure 5.4: Results of registration of image P2A_B6_M2_NOK-0001-Scene-2 (Moving image) to P2A_B6_M2_GNI-0001-Scene-2 (Target image)

5.1.3 0002_Scene_1

Raw images:

- P2A_B6_M2_GNI-0002-Scene-1.czi
- P2A_B6_M2_HE-0002-Scene-1.czi
- P2A_B6_M2_NOK-0002-Scene-1.czi

Registered stainings: 3/3

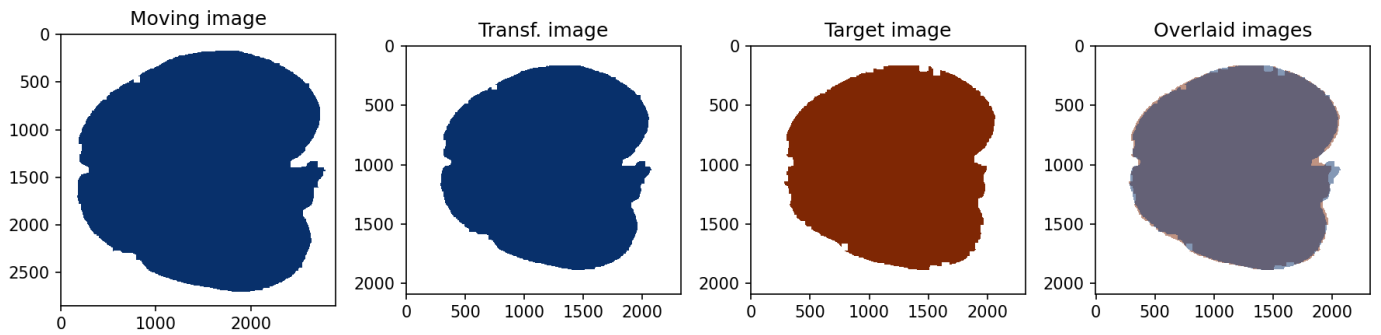


Figure 5.5: Results of registration of image P2A_B6_M2_HE-0002-Scene-1 (Moving image) to P2A_B6_M2_GNI-0002-Scene-1 (Target image)

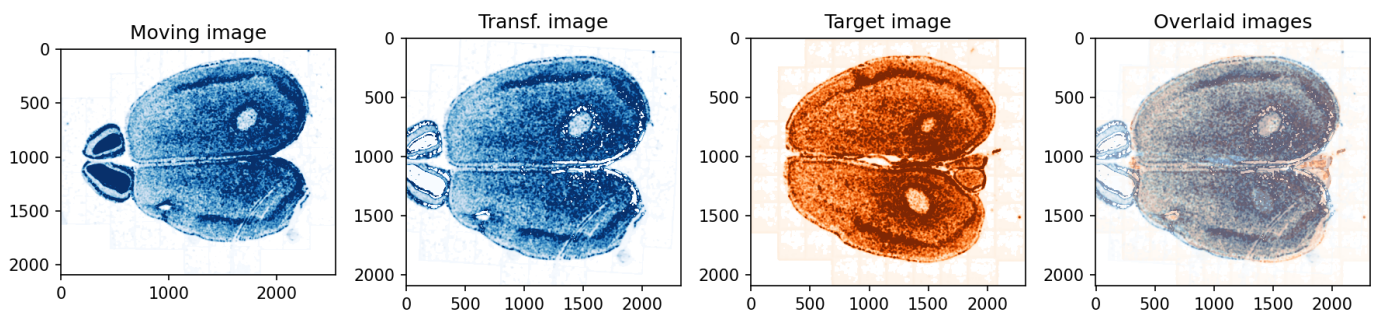


Figure 5.6: Results of registration of image P2A_B6_M2_NOK-0002-Scene-1 (Moving image) to P2A_B6_M2_GNI-0002-Scene-1 (Target image)

5.1.4 0002_Scene_2

Raw images:

- P2A_B6_M2_GNI-0002-Scene-2.czi
- P2A_B6_M2_HE-0002-Scene-2.czi
- P2A_B6_M2_NOK-0002-Scene-2.czi

Registered stainings: 3/3

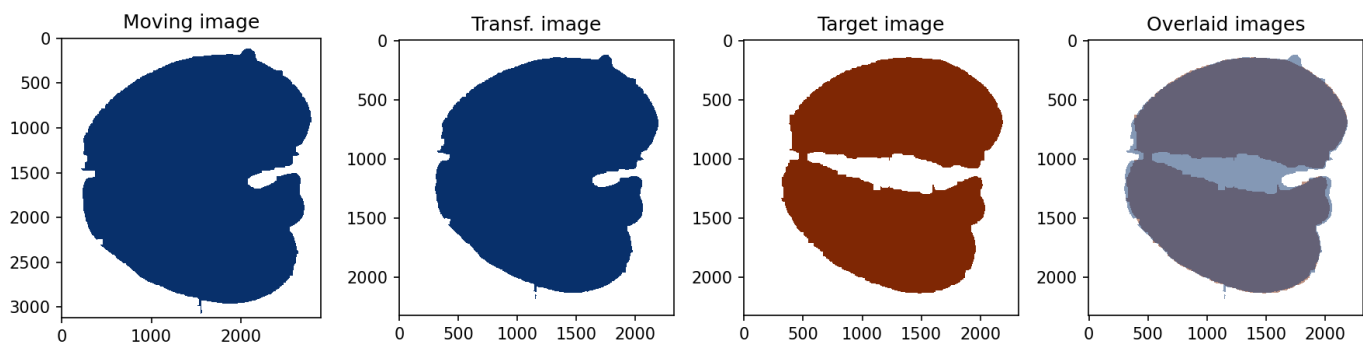


Figure 5.7: Results of registration of image P2A_B6_M2_HE-0002-Scene-2 (Moving image) to P2A_B6_M2_GNI-0002-Scene-2 (Target image)

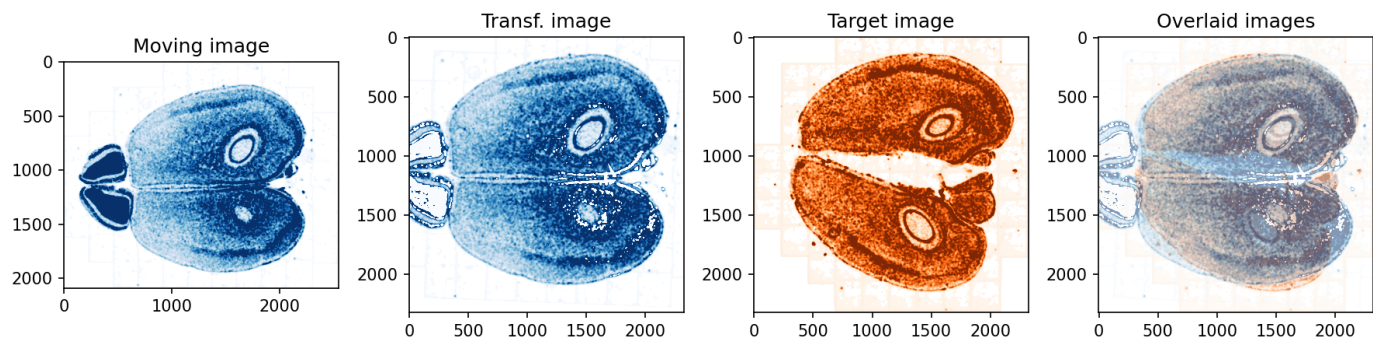


Figure 5.8: Results of registration of image P2A_B6_M2_NOK-0002-Scene-2 (Moving image) to P2A_B6_M2_GNI-0002-Scene-2 (Target image)

5.1.5 0003_Scene_1

Raw images:

- P2A_B6_M2_GNI-0003-Scene-1.czi
- P2A_B6_M2_HE-0003-Scene-1.czi
- P2A_B6_M2_NOK-0003-Scene-1.czi

Registered stainings: 3/3

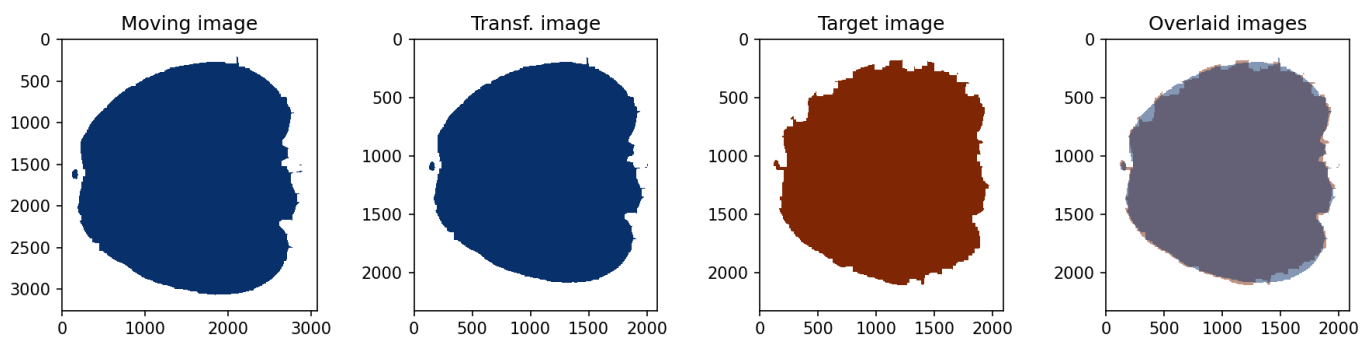


Figure 5.9: Results of registration of image P2A_B6_M2_HE-0003-Scene-1 (Moving image) to P2A_B6_M2_GNI-0003-Scene-1 (Target image)

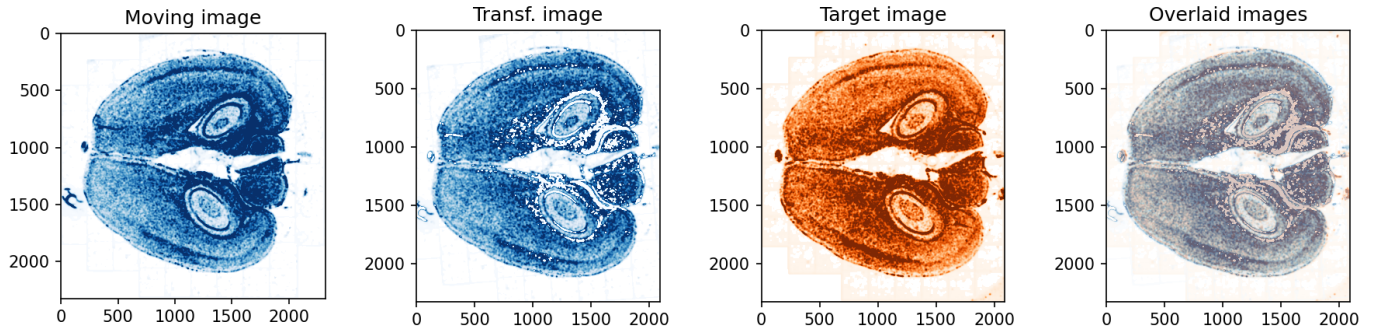


Figure 5.10: Results of registration of image P2A.B6.M2.NOK-0003-Scene-1 (Moving image) to P2A.B6.M2.GNI-0003-Scene-1 (Target image)

5.1.6 0003_Scene_2

Raw images:

- P2A.B6.M2.GNI-0003-Scene-2.czi
- P2A.B6.M2.HE-0003-Scene-2.czi
- P2A.B6.M2.NOK-0003-Scene-2.czi

Registered stainings: 3/3

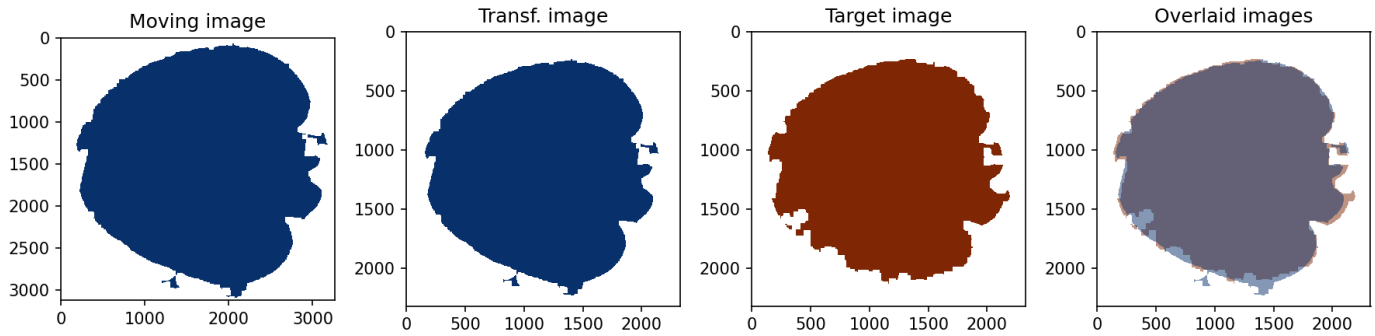


Figure 5.11: Results of registration of image P2A.B6.M2.HE-0003-Scene-2 (Moving image) to P2A.B6.M2.GNI-0003-Scene-2 (Target image)

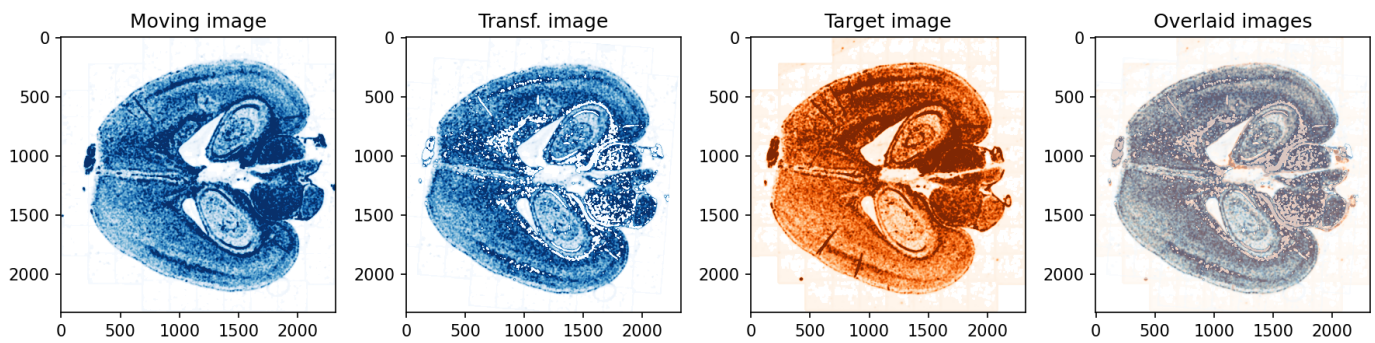


Figure 5.12: Results of registration of image P2A.B6.M2.NOK-0003-Scene-2 (Moving image) to P2A.B6.M2.GNI-0003-Scene-2 (Target image)

5.1.7 0004_Scene_1

Raw images:

- P2A_B6_M2_GNI-0004-Scene-1.czi
- P2A_B6_M2_HE-0004-Scene-1.czi
- P2A_B6_M2_NOK-0004-Scene-1.czi

Registered stainings: 3/3

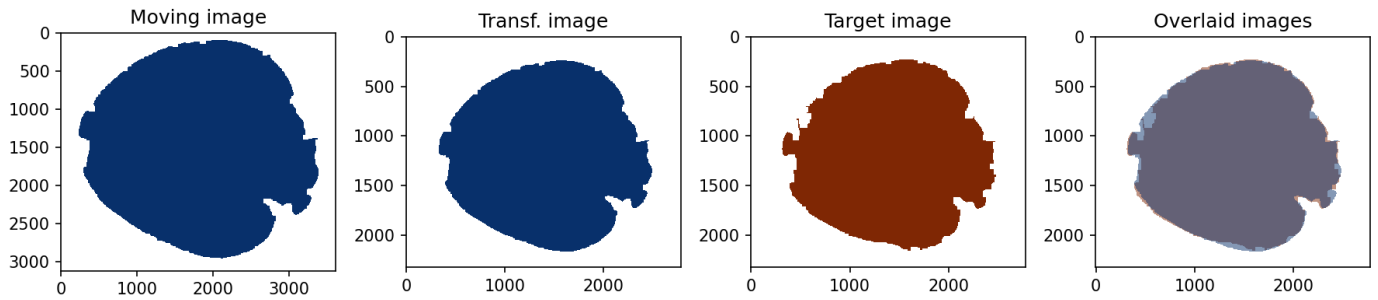


Figure 5.13: Results of registration of image P2A_B6_M2_HE-0004-Scene-1 (Moving image) to P2A_B6_M2_GNI-0004-Scene-1 (Target image)

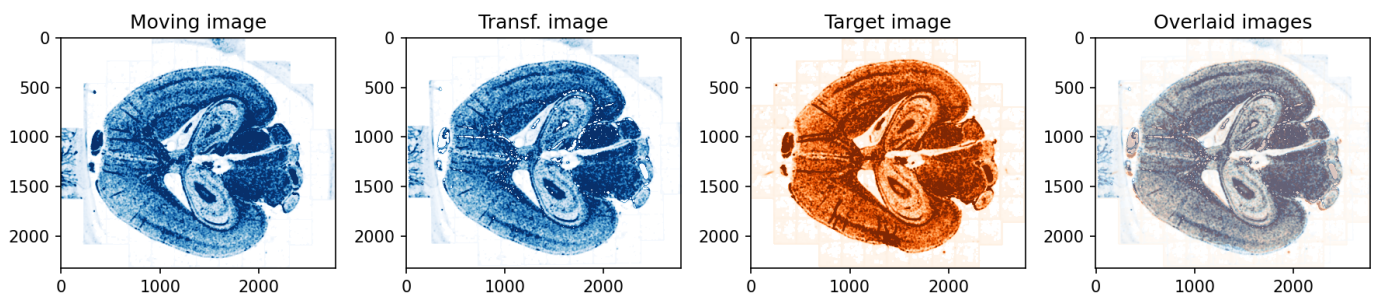


Figure 5.14: Results of registration of image P2A_B6_M2_NOK-0004-Scene-1 (Moving image) to P2A_B6_M2_GNI-0004-Scene-1 (Target image)

5.1.8 0004_Scene_2

Raw images:

- P2A_B6_M2_GNI-0004-Scene-2.czi
- P2A_B6_M2_HE-0004-Scene-2.czi
- P2A_B6_M2_NOK-0004-Scene-2.czi

Registered stainings: 3/3

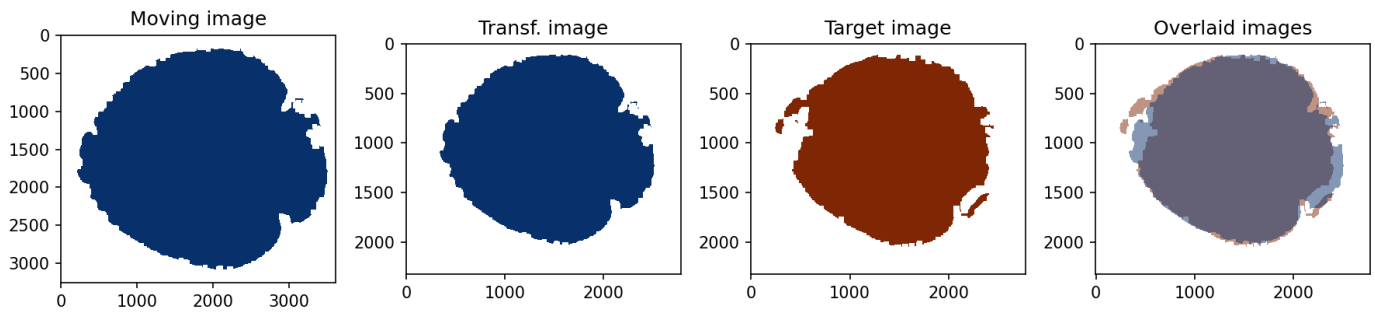


Figure 5.15: Results of registration of image P2A.B6.M2.HE-0004-Scene-2 (Moving image) to P2A.B6.M2.GNI-0004-Scene-2 (Target image)

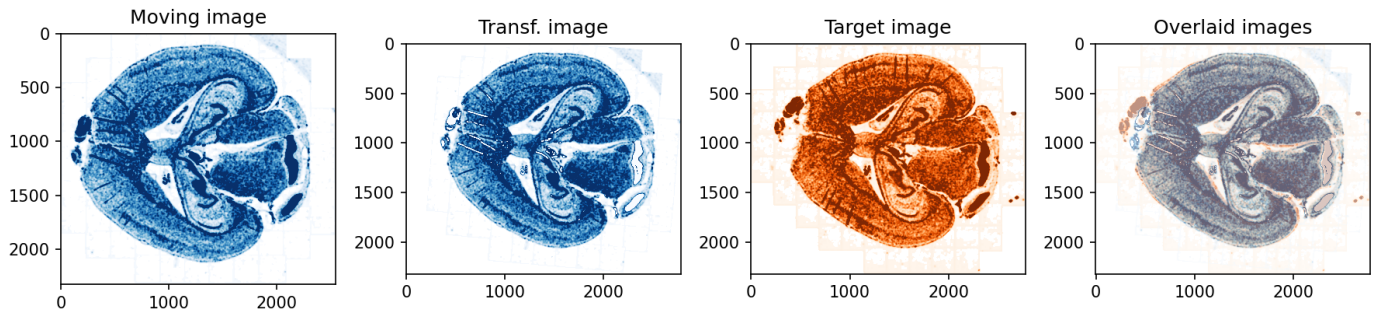


Figure 5.16: Results of registration of image P2A.B6.M2.NOK-0004-Scene-2 (Moving image) to P2A.B6.M2.GNI-0004-Scene-2 (Target image)

5.1.9 0005_Scene_1

Raw images:

- P2A.B6.M2.GNI-0005-Scene-1.czi
- P2A.B6.M2.HE-0005-Scene-1.czi
- P2A.B6.M2.NOK-0005-Scene-1.czi

Registered stainings: 3/3

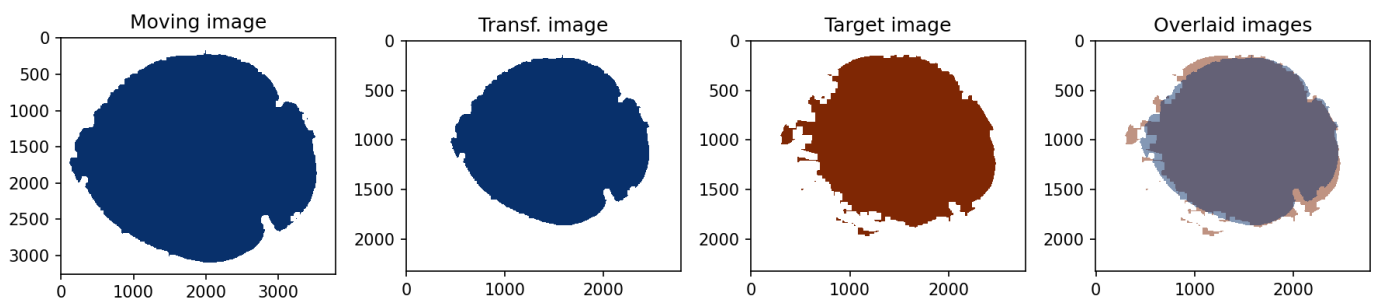


Figure 5.17: Results of registration of image P2A.B6.M2.HE-0005-Scene-1 (Moving image) to P2A.B6.M2.GNI-0005-Scene-1 (Target image)

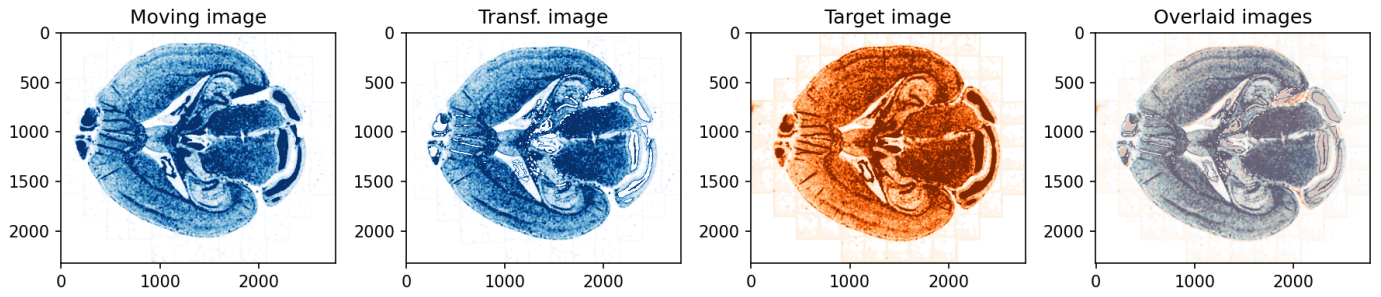


Figure 5.18: Results of registration of image P2A.B6.M2.NOK-0005-Scene-1 (Moving image) to P2A.B6.M2.GNI-0005-Scene-1 (Target image)

5.1.10 0005_Scene_2

Raw images:

- P2A.B6.M2.GNI-0005-Scene-2.czi
- P2A.B6.M2.HE-0005-Scene-2.czi
- P2A.B6.M2.NOK-0005-Scene-2.czi

Registered stainings: 3/3

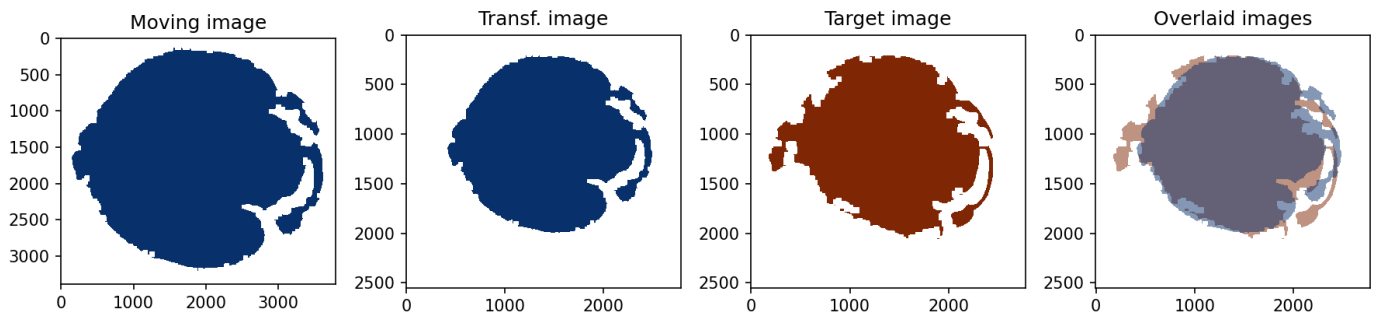


Figure 5.19: Results of registration of image P2A.B6.M2.HE-0005-Scene-2 (Moving image) to P2A.B6.M2.GNI-0005-Scene-2 (Target image)

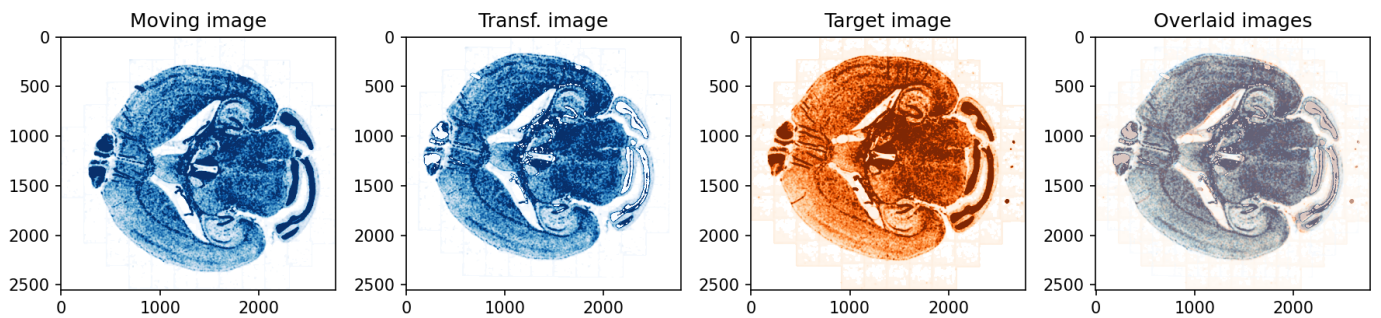


Figure 5.20: Results of registration of image P2A.B6.M2.NOK-0005-Scene-2 (Moving image) to P2A.B6.M2.GNI-0005-Scene-2 (Target image)

5.1.11 0006_Scene_1

Raw images:

- P2A_B6_M2_GNI-0006-Scene-1.czi
- P2A_B6_M2_HE-0006-Scene-1.czi
- P2A_B6_M2_NOK-0006-Scene-1.czi

Registered stainings: 3/3

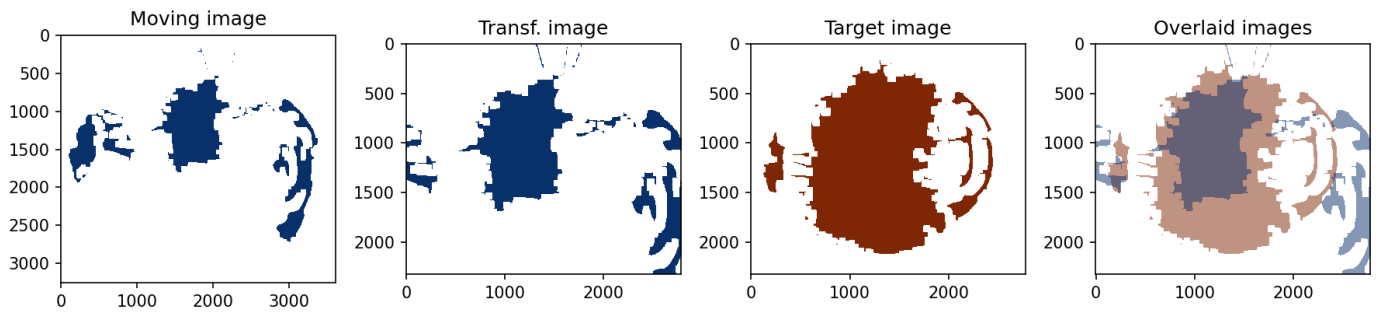


Figure 5.21: Results of registration of image P2A_B6_M2_HE-0006-Scene-1 (Moving image) to P2A_B6_M2_GNI-0006-Scene-1 (Target image)

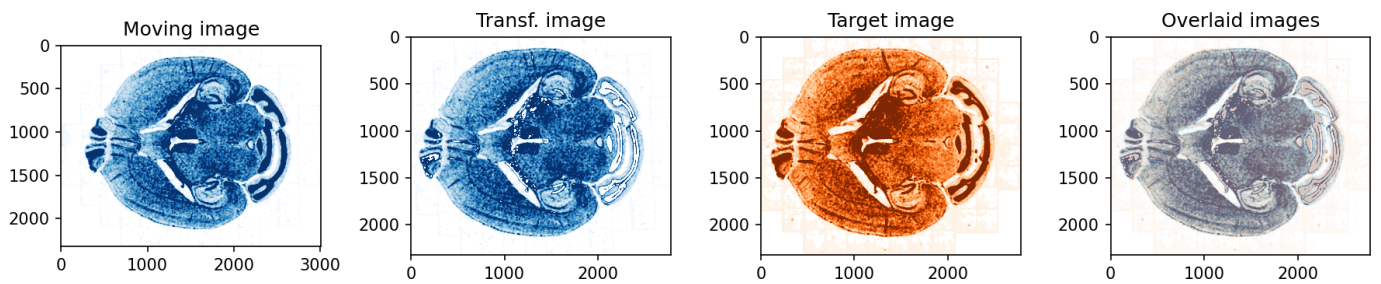


Figure 5.22: Results of registration of image P2A_B6_M2_NOK-0006-Scene-1 (Moving image) to P2A_B6_M2_GNI-0006-Scene-1 (Target image)

5.1.12 0006_Scene_2

Raw images:

- P2A_B6_M2_GNI-0006-Scene-2.czi
- P2A_B6_M2_HE-0006-Scene-2.czi
- P2A_B6_M2_NOK-0006-Scene-2.czi

Registered stainings: 3/3

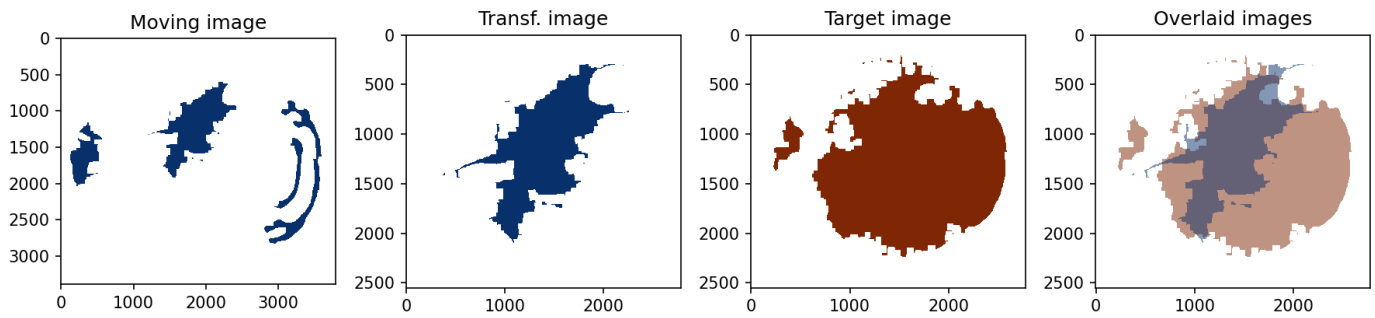


Figure 5.23: Results of registration of image P2A.B6.M2.HE-0006-Scene-2 (Moving image) to P2A.B6.M2.GNI-0006-Scene-2 (Target image)

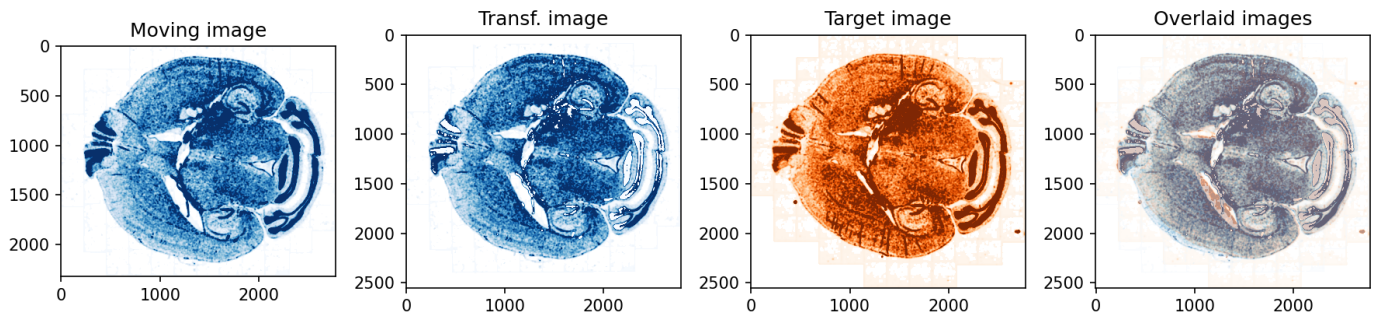


Figure 5.24: Results of registration of image P2A.B6.M2.NOK-0006-Scene-2 (Moving image) to P2A.B6.M2.GNI-0006-Scene-2 (Target image)

5.1.13 0007_Scene_1

Raw images:

- P2A.B6.M2.GNI-0007-Scene-1.czi
- P2A.B6.M2.HE-0007-Scene-1.czi
- P2A.B6.M2.NOK-0007-Scene-1.czi

Registered stainings: 3/3

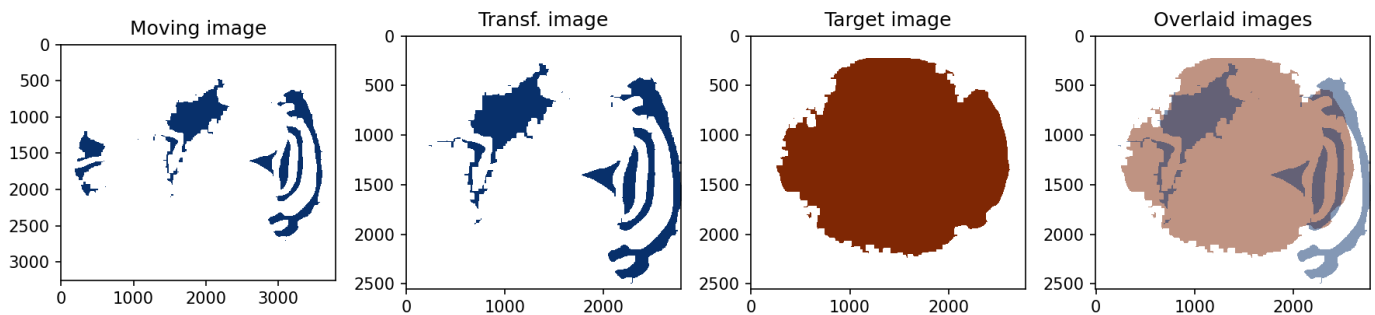


Figure 5.25: Results of registration of image P2A.B6.M2.HE-0007-Scene-1 (Moving image) to P2A.B6.M2.GNI-0007-Scene-1 (Target image)

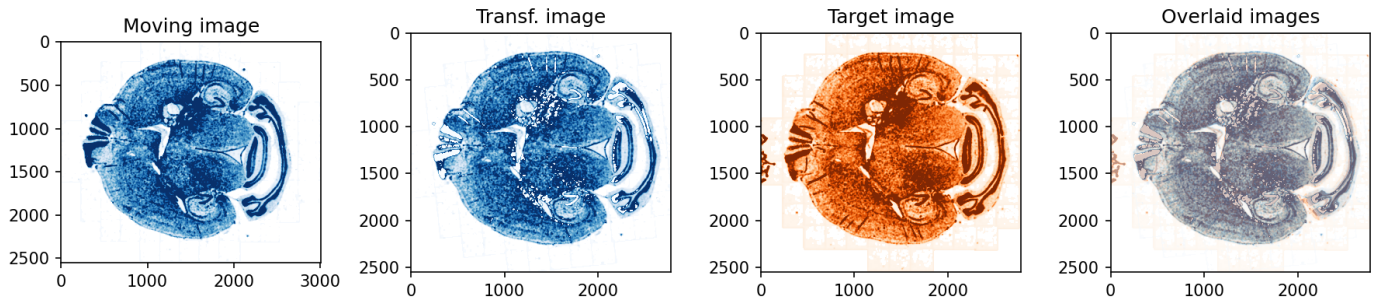


Figure 5.26: Results of registration of image P2A.B6.M2.NOK-0007-Scene-1 (Moving image) to P2A.B6.M2.GNI-0007-Scene-1 (Target image)

5.1.14 0007_Scene_2

Raw images:

- P2A.B6.M2.GNI-0007-Scene-2.czi
- P2A.B6.M2.HE-0007-Scene-2.czi
- P2A.B6.M2.NOK-0007-Scene-2.czi

Registered stainings: 3/3

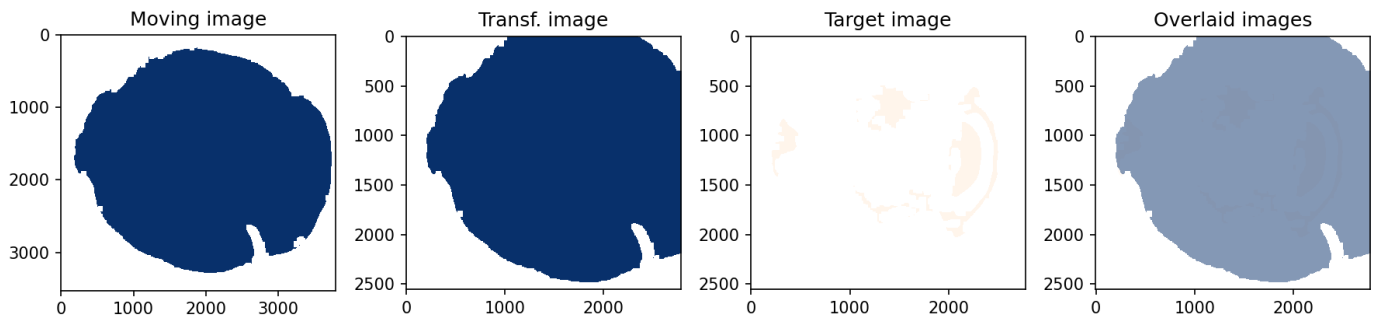


Figure 5.27: Results of registration of image P2A.B6.M2.HE-0007-Scene-2 (Moving image) to P2A.B6.M2.GNI-0007-Scene-2 (Target image)

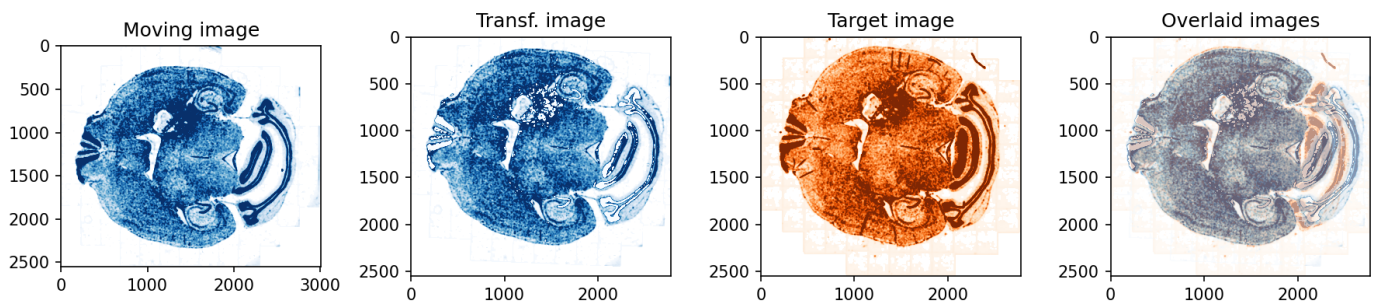


Figure 5.28: Results of registration of image P2A.B6.M2.NOK-0007-Scene-2 (Moving image) to P2A.B6.M2.GNI-0007-Scene-2 (Target image)

5.1.15 0008_Scene_1

Raw images:

- P2A_B6_M2_GNI-0008-Scene-1.czi
- P2A_B6_M2_HE-0008-Scene-1.czi
- P2A_B6_M2_NOK-0008-Scene-1.czi

Registered stainings: 3/3

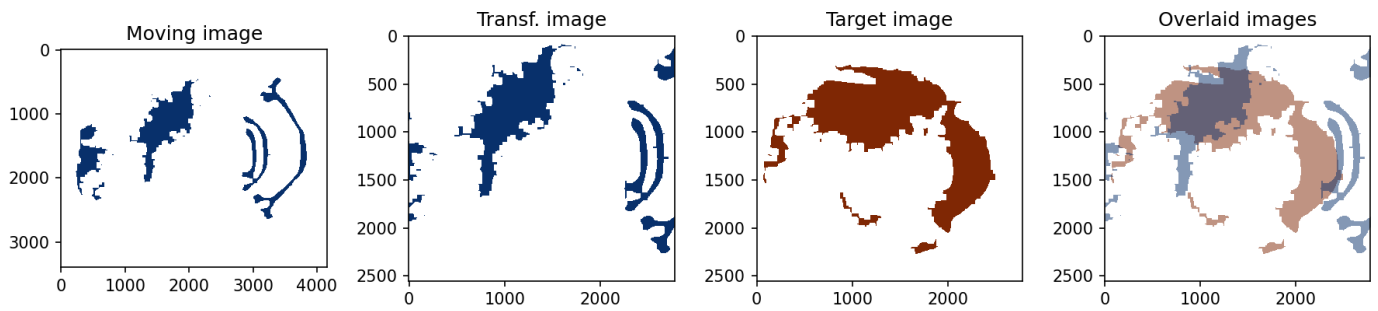


Figure 5.29: Results of registration of image P2A_B6_M2_HE-0008-Scene-1 (Moving image) to P2A_B6_M2_GNI-0008-Scene-1 (Target image)

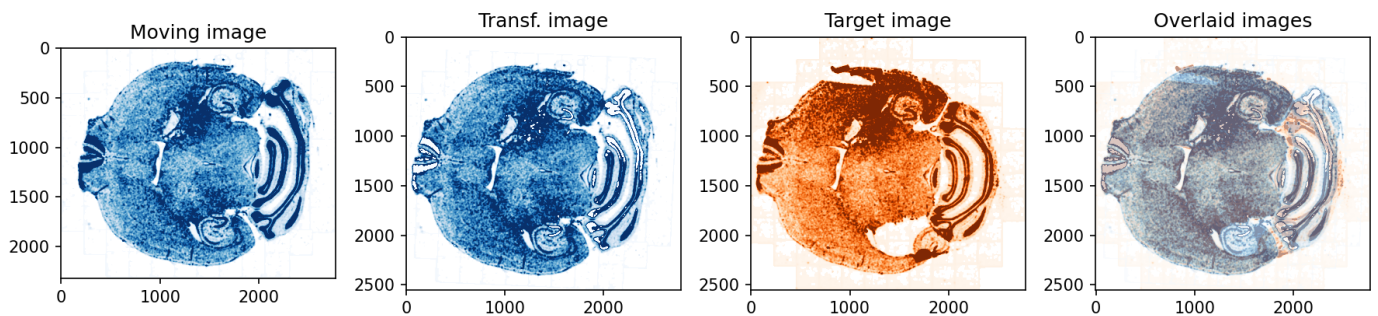


Figure 5.30: Results of registration of image P2A_B6_M2_NOK-0008-Scene-1 (Moving image) to P2A_B6_M2_GNI-0008-Scene-1 (Target image)

5.1.16 0008_Scene_2

Raw images:

- P2A_B6_M2_GNI-0008-Scene-2.czi
- P2A_B6_M2_HE-0008-Scene-2.czi
- P2A_B6_M2_NOK-0008-Scene-2.czi

Registered stainings: 3/3

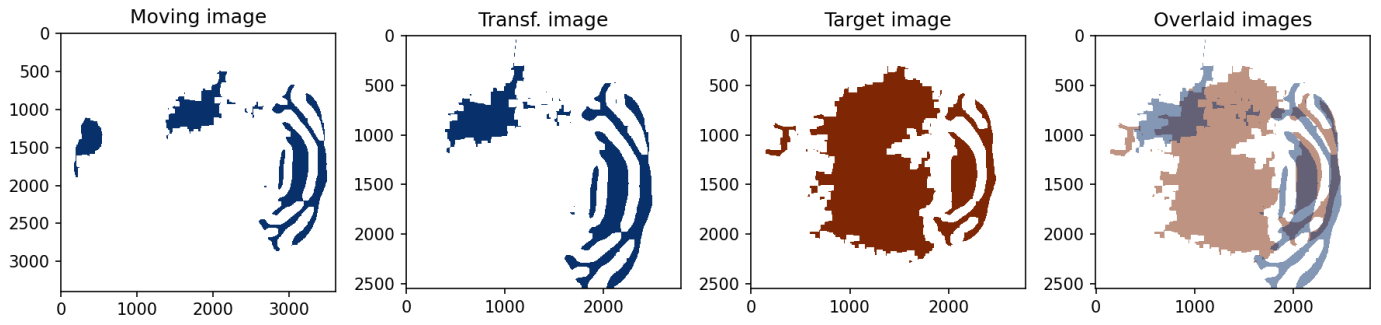


Figure 5.31: Results of registration of image P2A_B6_M2_HE-0008-Scene-2 (Moving image) to P2A_B6_M2_GNI-0008-Scene-2 (Target image)

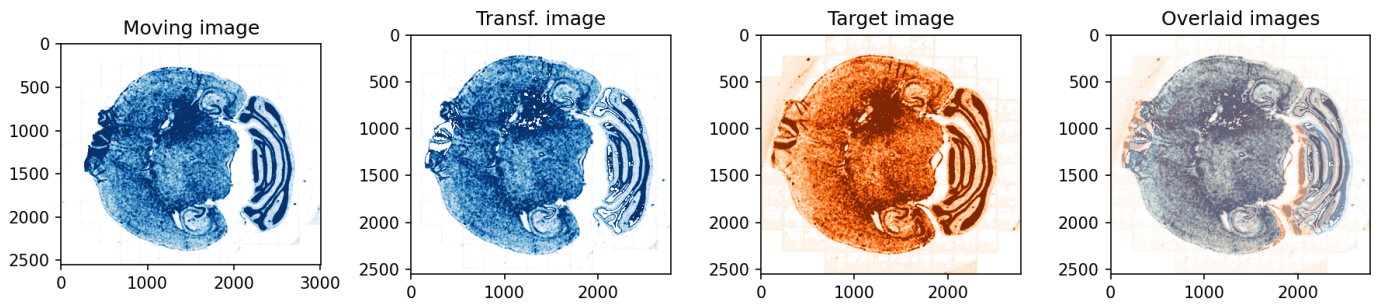


Figure 5.32: Results of registration of image P2A_B6_M2_NOK-0008-Scene-2 (Moving image) to P2A_B6_M2_GNI-0008-Scene-2 (Target image)

5.1.17 0009_Scene_1

Raw images:

- P2A_B6_M2_GNI-0009-Scene-1.czi
- P2A_B6_M2_NOK-0009-Scene-1.czi

Registered stainings: 2/3

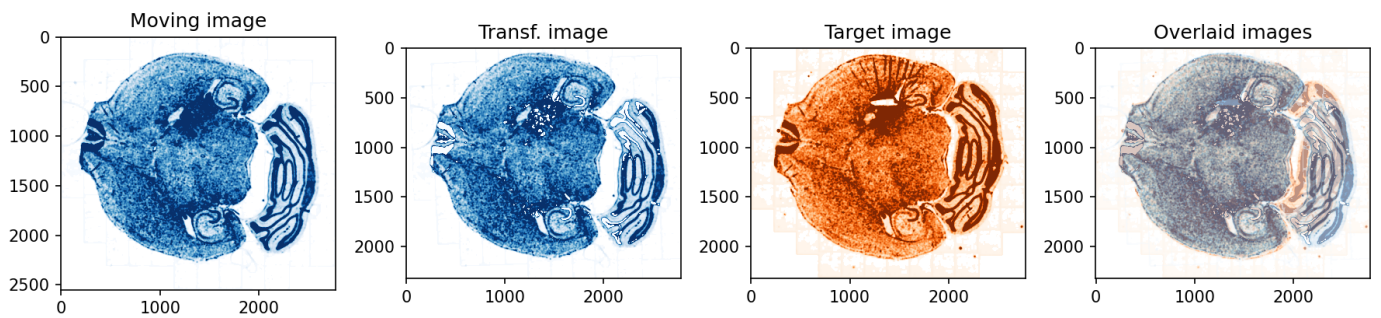


Figure 5.33: Results of registration of image P2A_B6_M2_NOK-0009-Scene-1 (Moving image) to P2A_B6_M2_GNI-0009-Scene-1 (Target image)

5.1.18 0009_Scene_2

Raw images:

- P2A_B6_M2_GNI-0009-Scene-2.czi
- P2A_B6_M2_NOK-0009-Scene-2.czi

Registered stainings: 2/3

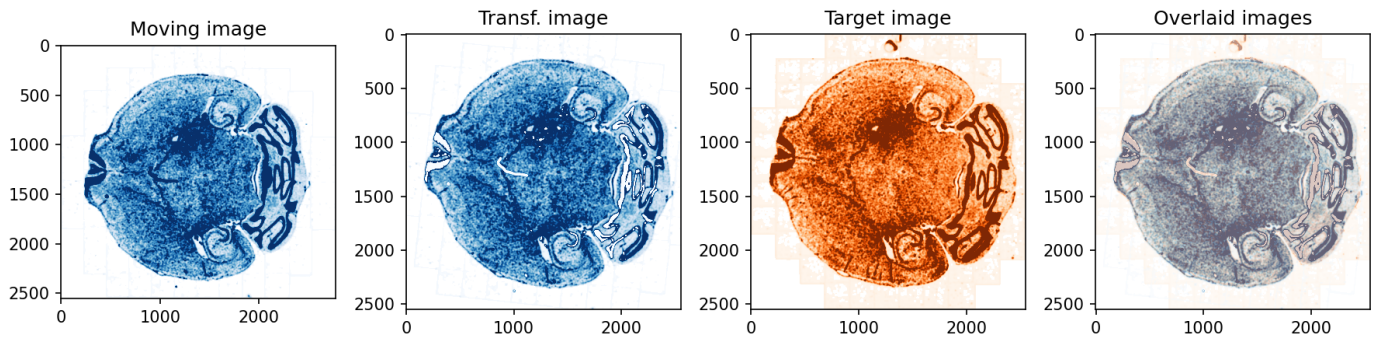


Figure 5.34: Results of registration of image P2A_B6_M2_NOK-0009-Scene-2 (Moving image) to P2A_B6_M2_GNI-0009-Scene-2 (Target image)

5.1.19 0010_Scene_1

Raw images:

- P2A_B6_M2_GNI-0010-Scene-1.czi
- P2A_B6_M2_HE-0010-Scene-1.czi
- P2A_B6_M2_NOK-0010-Scene-1.czi

Registered stainings: 3/3

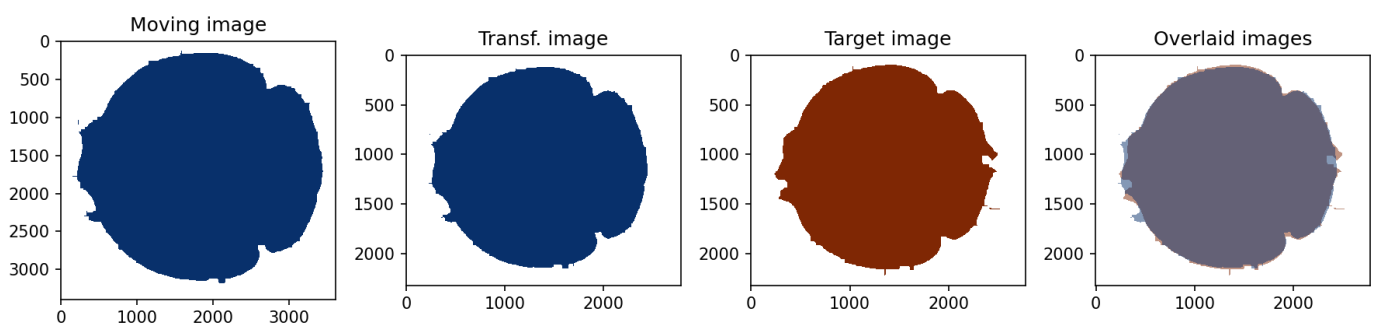


Figure 5.35: Results of registration of image P2A_B6_M2_HE-0010-Scene-1 (Moving image) to P2A_B6_M2_GNI-0010-Scene-1 (Target image)

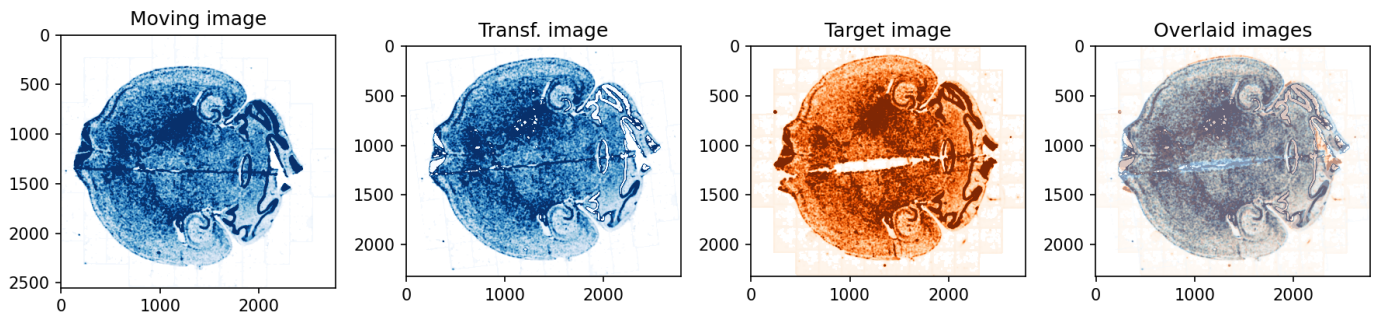


Figure 5.36: Results of registration of image P2A.B6.M2.NOK-0010-Scene-1 (Moving image) to P2A.B6.M2.GNI-0010-Scene-1 (Target image)

5.1.20 0011_Scene_1

Raw images:

- P2A.B6.M2.GNI-0011-Scene-1.czi
- P2A.B6.M2.HE-0011-Scene-1.czi
- P2A.B6.M2.NOK-0011-Scene-1.czi

Registered stainings: 3/3

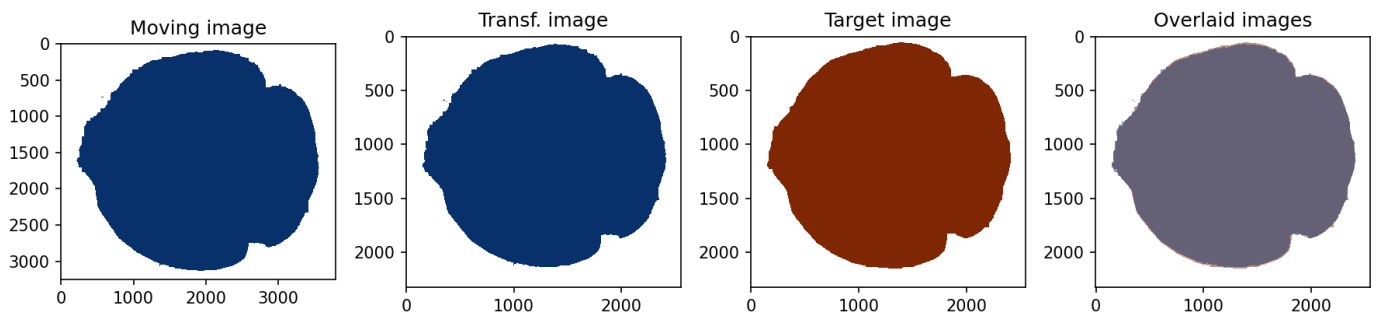


Figure 5.37: Results of registration of image P2A.B6.M2.HE-0011-Scene-1 (Moving image) to P2A.B6.M2.GNI-0011-Scene-1 (Target image)

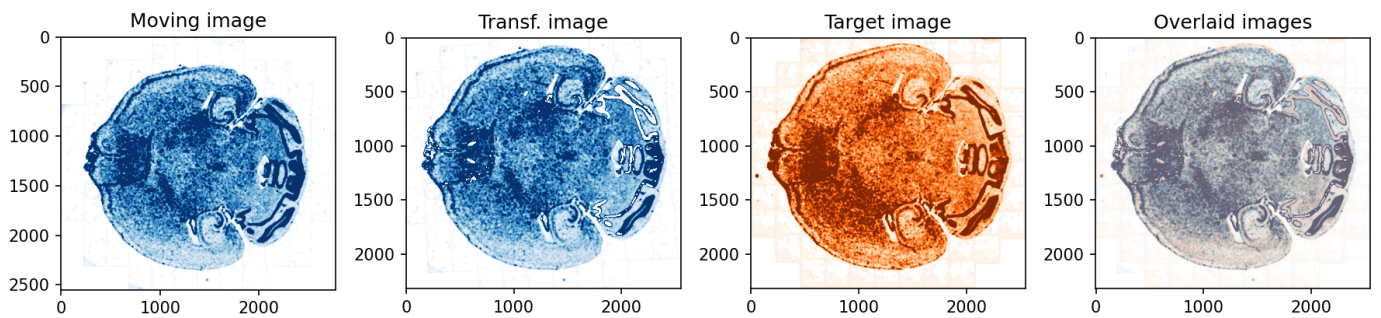


Figure 5.38: Results of registration of image P2A.B6.M2.NOK-0011-Scene-1 (Moving image) to P2A.B6.M2.GNI-0011-Scene-1 (Target image)

5.1.21 0011_Scene_2

Raw images:

- P2A_B6_M2_GNI-0011-Scene-2.czi
- P2A_B6_M2_HE-0011-Scene-2.czi
- P2A_B6_M2_NOK-0011-Scene-2.czi

Registered stainings: 3/3

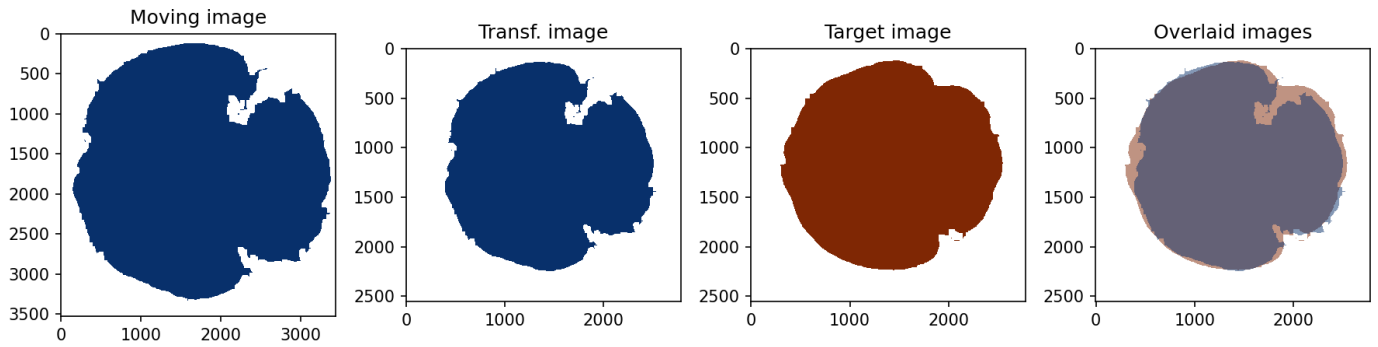


Figure 5.39: Results of registration of image P2A_B6_M2_HE-0011-Scene-2 (Moving image) to P2A_B6_M2_GNI-0011-Scene-2 (Target image)

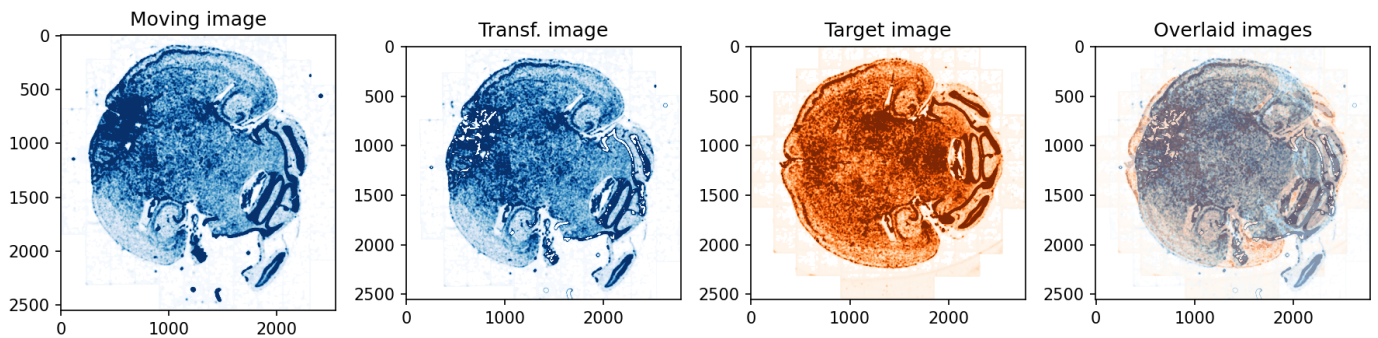


Figure 5.40: Results of registration of image P2A_B6_M2_NOK-0011-Scene-2 (Moving image) to P2A_B6_M2_GNI-0011-Scene-2 (Target image)

5.1.22 0012_Scene_1

Raw images:

- P2A_B6_M2_GNI-0012-Scene-1.czi
- P2A_B6_M2_HE-0012-Scene-1.czi
- P2A_B6_M2_NOK-0012-Scene-1.czi

Registered stainings: 3/3

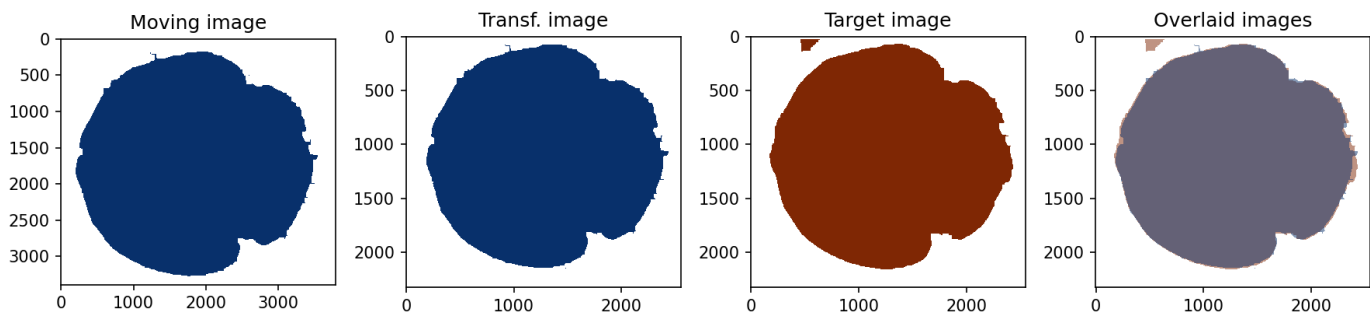


Figure 5.41: Results of registration of image P2A.B6.M2.HE-0012-Scene-1 (Moving image) to P2A.B6.M2.GNI-0012-Scene-1 (Target image)

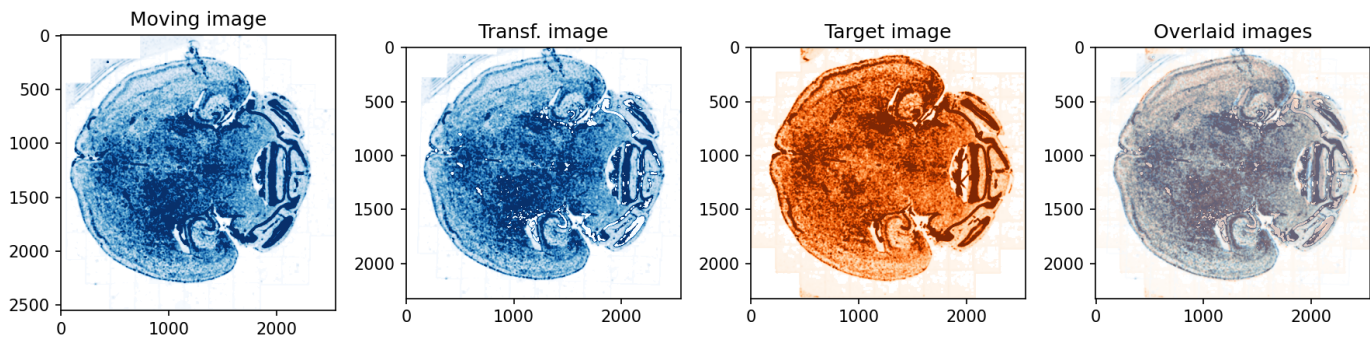


Figure 5.42: Results of registration of image P2A.B6.M2.NOK-0012-Scene-1 (Moving image) to P2A.B6.M2.GNI-0012-Scene-1 (Target image)

5.1.23 0012_Scene_2

Raw images:

- P2A.B6.M2.GNI-0012-Scene-2.czi
- P2A.B6.M2.HE-0012-Scene-2.czi
- P2A.B6.M2.NOK-0012-Scene-2.czi

Registered stainings: 3/3

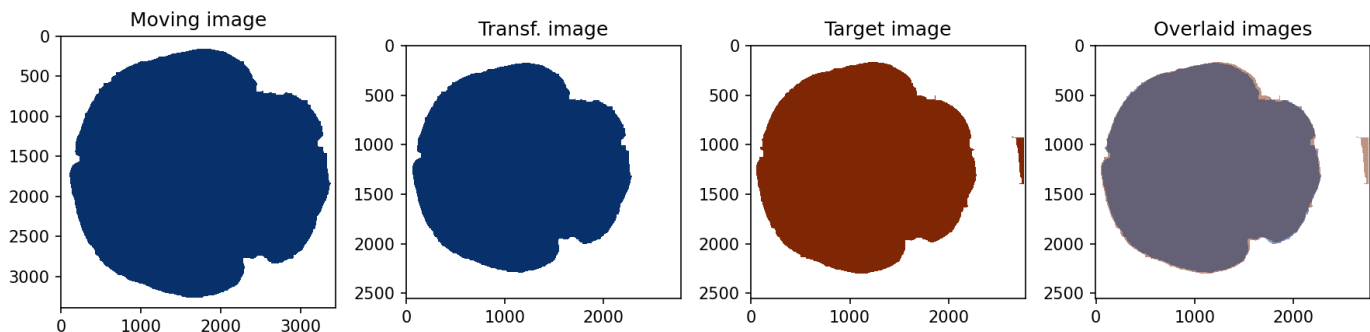


Figure 5.43: Results of registration of image P2A.B6.M2.HE-0012-Scene-2 (Moving image) to P2A.B6.M2.GNI-0012-Scene-2 (Target image)

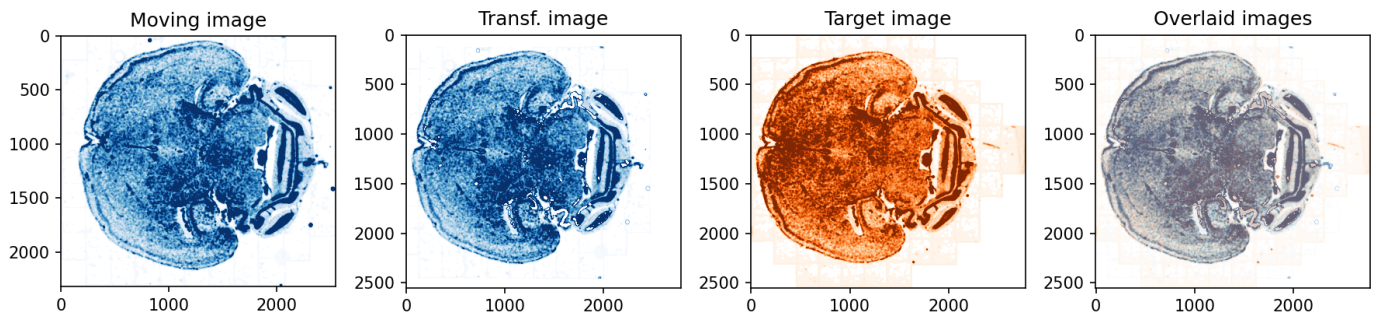


Figure 5.44: Results of registration of image P2A.B6.M2.NOK-0012-Scene-2 (Moving image) to P2A.B6.M2.GNI-0012-Scene-2 (Target image)

5.1.24 0013_Scene_1

Raw images:

- P2A.B6.M2.GNI-0013-Scene-1.czi
- P2A.B6.M2.HE-0013-Scene-1.czi
- P2A.B6.M2.NOK-0013-Scene-1.czi

Registered stainings: 3/3

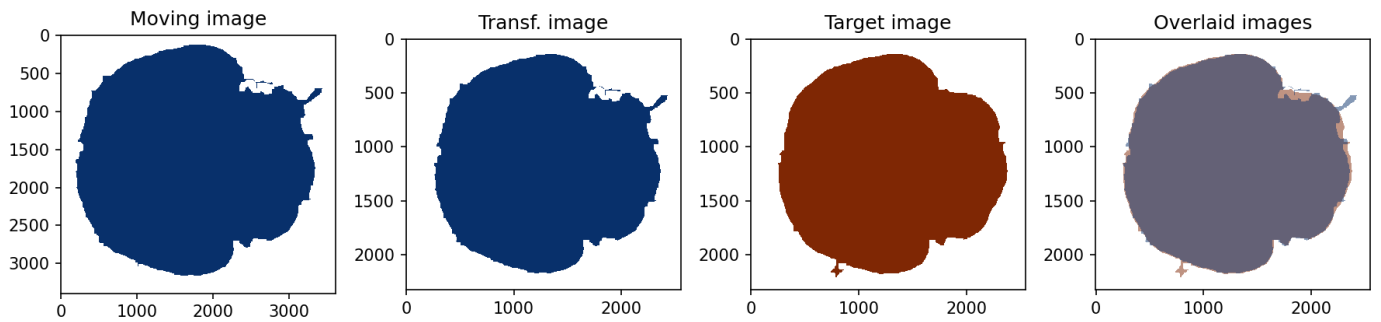


Figure 5.45: Results of registration of image P2A.B6.M2.HE-0013-Scene-1 (Moving image) to P2A.B6.M2.GNI-0013-Scene-1 (Target image)

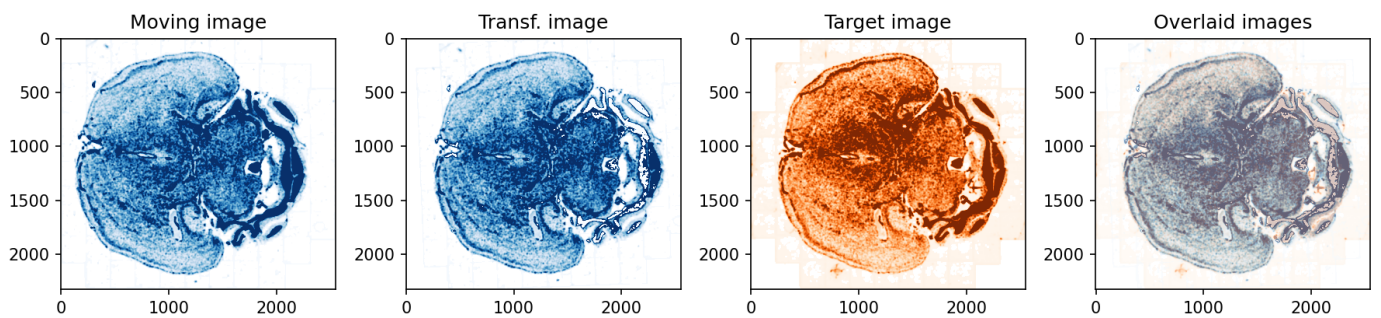


Figure 5.46: Results of registration of image P2A.B6.M2.NOK-0013-Scene-1 (Moving image) to P2A.B6.M2.GNI-0013-Scene-1 (Target image)

5.1.25 0013_Scene_2

Raw images:

- P2A_B6_M2_GNI-0013-Scene-2.czi
- P2A_B6_M2_HE-0013-Scene-2.czi
- P2A_B6_M2_NOK-0013-Scene-2.czi

Registered stainings: 3/3

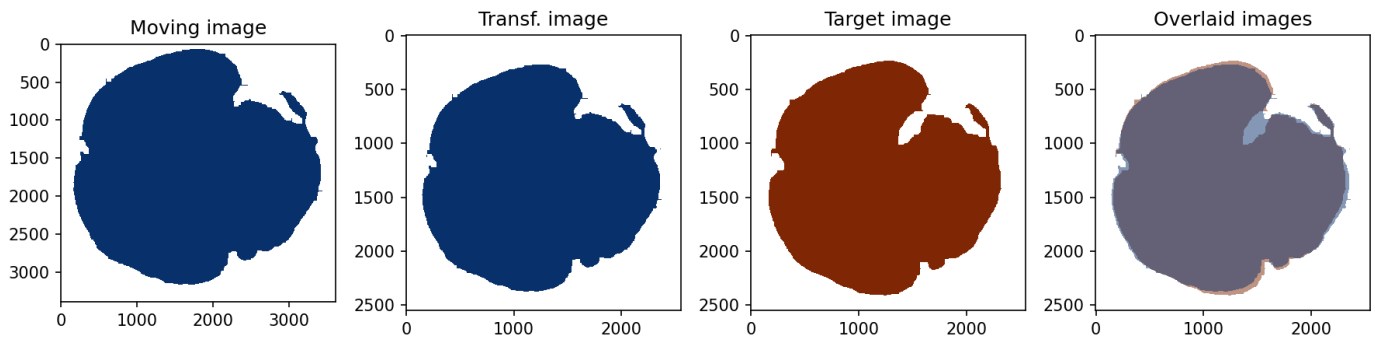


Figure 5.47: Results of registration of image P2A_B6_M2_HE-0013-Scene-2 (Moving image) to P2A_B6_M2_GNI-0013-Scene-2 (Target image)

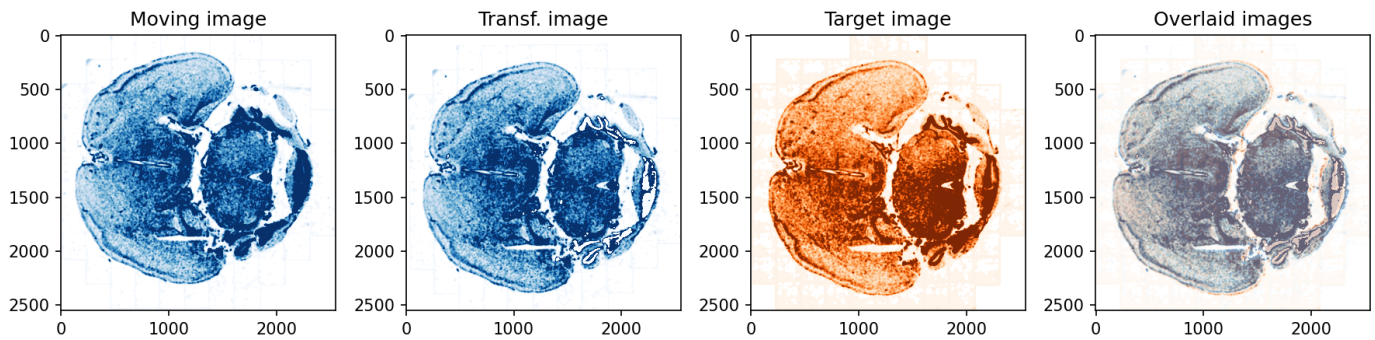


Figure 5.48: Results of registration of image P2A_B6_M2_NOK-0013-Scene-2 (Moving image) to P2A_B6_M2_GNI-0013-Scene-2 (Target image)

5.1.26 0014_Scene_1

Raw images:

- P2A_B6_M2_GNI-0014-Scene-1.czi
- P2A_B6_M2_HE-0014-Scene-1.czi
- P2A_B6_M2_NOK-0014-Scene-1.czi

Registered stainings: 3/3

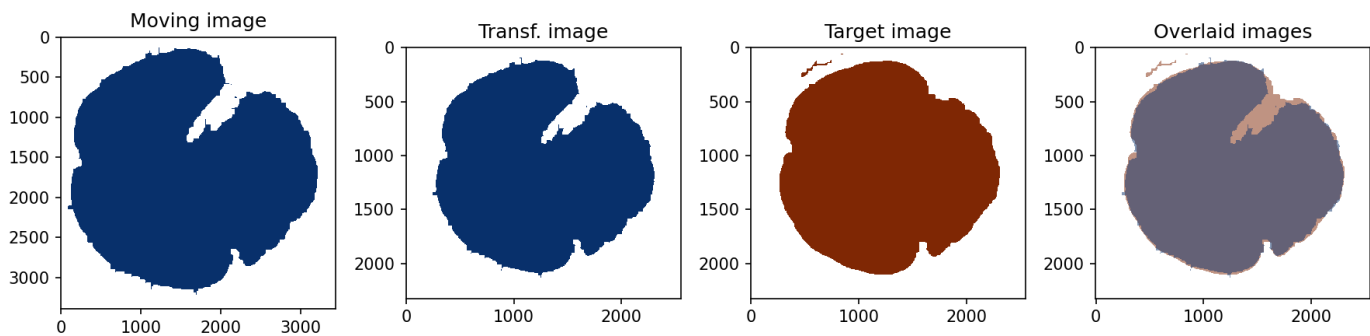


Figure 5.49: Results of registration of image P2A.B6.M2.HE-0014-Scene-1 (Moving image) to P2A.B6.M2.GNI-0014-Scene-1 (Target image)

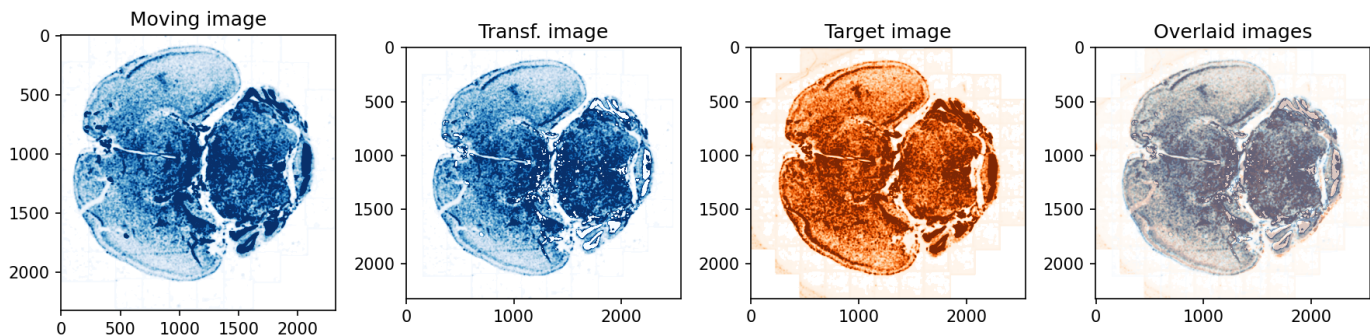


Figure 5.50: Results of registration of image P2A.B6.M2.NOK-0014-Scene-1 (Moving image) to P2A.B6.M2.GNI-0014-Scene-1 (Target image)

5.1.27 0014_Scene_2

Raw images:

- P2A.B6.M2.GNI-0014-Scene-2.czi
- P2A.B6.M2.HE-0014-Scene-2.czi
- P2A.B6.M2.NOK-0014-Scene-2.czi

Registered stainings: 3/3

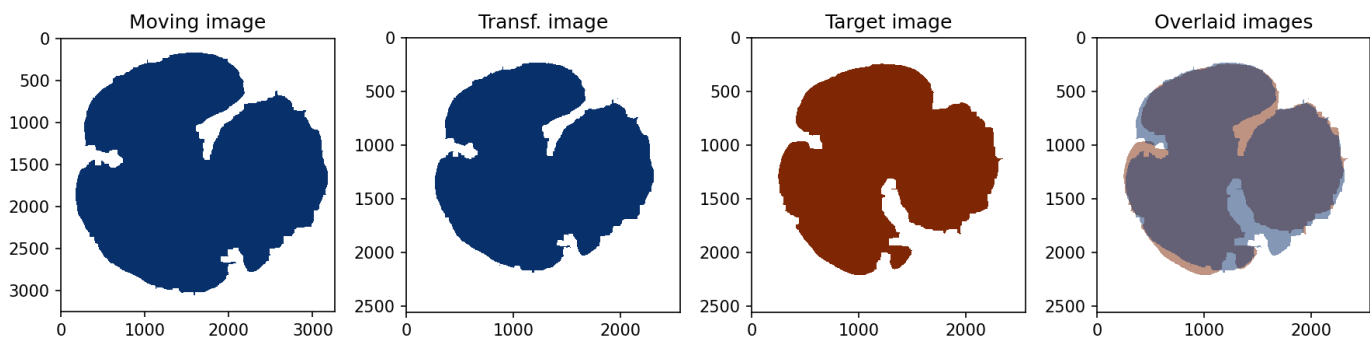


Figure 5.51: Results of registration of image P2A.B6.M2.HE-0014-Scene-2 (Moving image) to P2A.B6.M2.GNI-0014-Scene-2 (Target image)

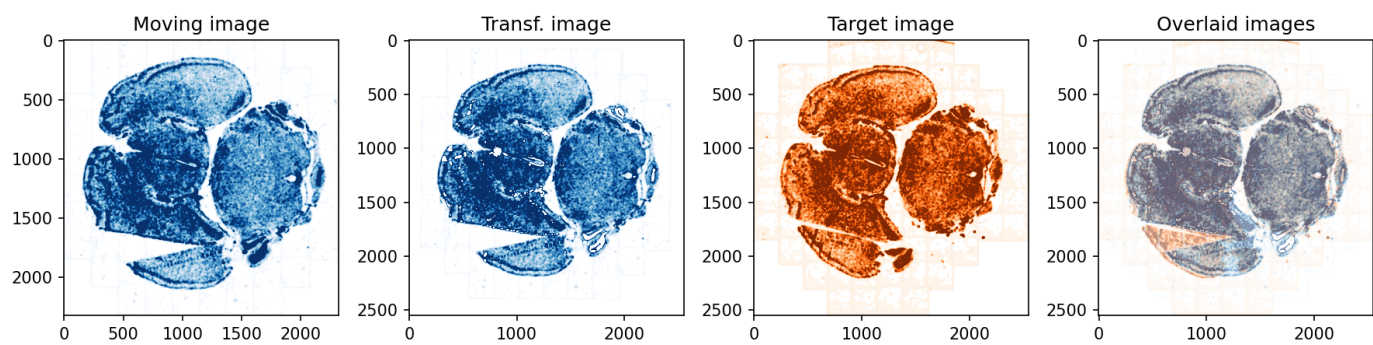


Figure 5.52: Results of registration of image P2A.B6.M2.NOK-0014-Scene-2 (Moving image) to P2A.B6.M2.GNI-0014-Scene-2 (Target image)

5.2 Slice2Volume

Forward transformation files: 27/27

Inverse transformation files: 27/27

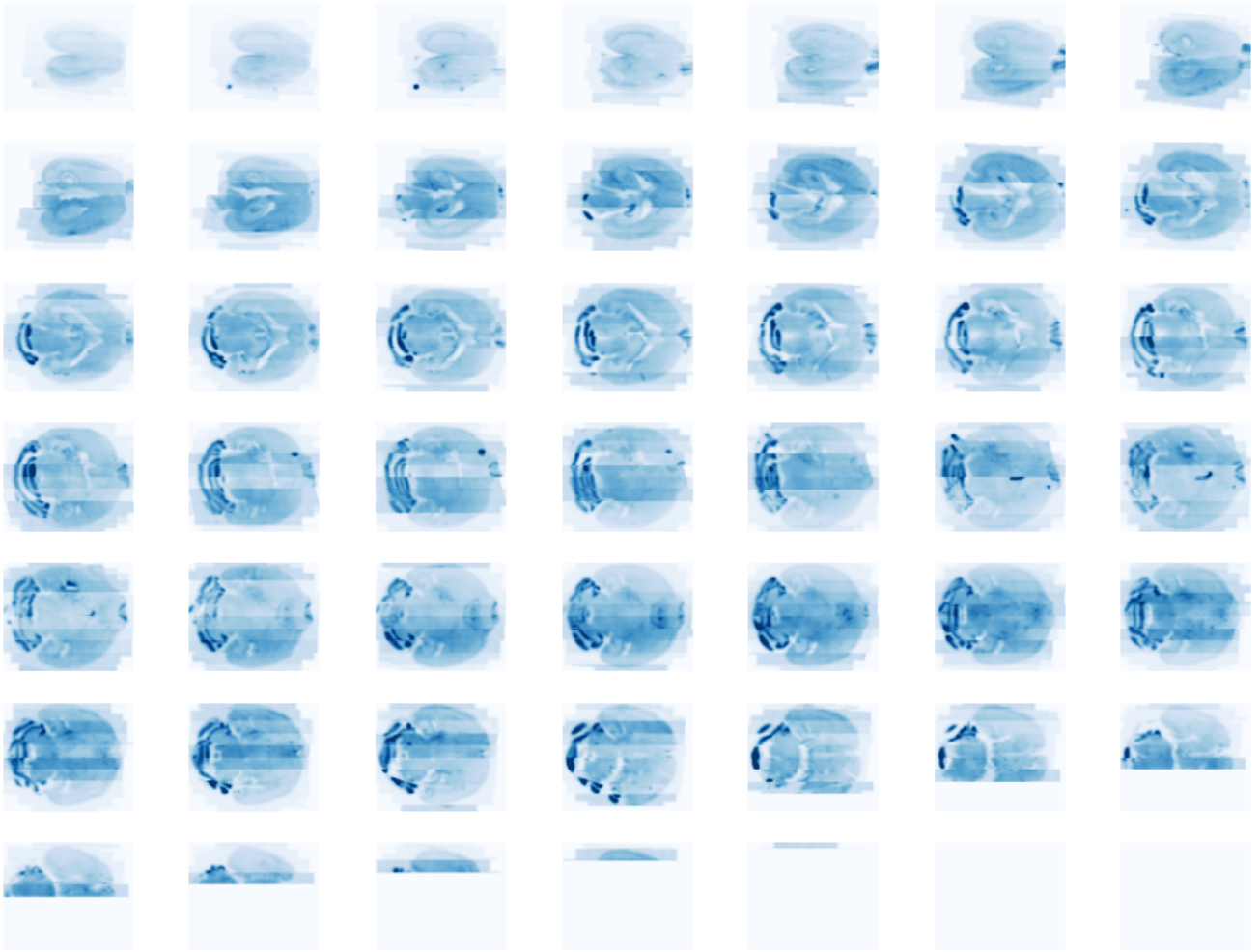


Figure 5.53: Sequence of coronal DAPI images that were transformed with Slice2Volume. This view allows to evaluate the consistency of subsequent slices.

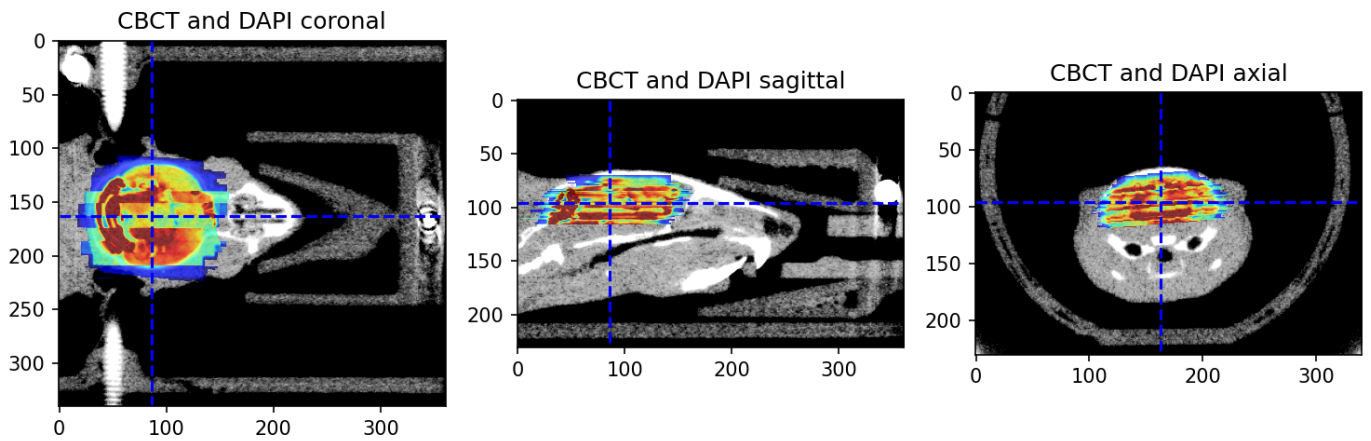


Figure 5.54: Overlay of downsampled and transformed histological image (DAPI_r) and CBCT