

QA protocol: P2A_B6_M10

Johannes Müller^{1,2,†}, Theresa Suckert^{1,3,†}, Elke Beyreuther^{1, 4}, Moritz Schneider¹, Marc Boucsein⁵, Elisabeth Bodenstein^{1, 2}, Liane Stolz-Kieslich^{1, 2}, Mechthild Krause^{1,2,3, 6, 7}, Cläre von Neubeck^{1, 3, 8}, Robert Haase⁹, Armin Lühr^{1, 2, 3, 10 #}, and Antje Dietrich^{1,3,*,#}

¹*OncoRay - National Center for Radiation Research in Oncology, Faculty of Medicine and University Hospital Carl Gustav Carus, Technische Universität Dresden, Helmholtz-Zentrum Dresden-Rossendorf, Dresden, 01309, Germany*

²*Helmholtz-Zentrum Dresden-Rossendorf, Institute of Radiooncology - OncoRay, Dresden, 01309, Germany*

³*German Cancer Consortium (DKTK), Partner Site Dresden, and German Cancer Research Center (DKFZ), Heidelberg, 69120, Germany*

⁴*Helmholtz - Zentrum Dresden - Rossendorf, Institute of Radiation Physics, Dresden, 01328, Germany*

⁵*Clinical Cooperation Unit Radiation Oncology, German Cancer Research Center (DKFZ), and Department of Radiation Oncology, Heidelberg University Hospital, Heidelberg, 69120, Germany*

⁶*Department of Radiotherapy and Radiation Oncology, Faculty of Medicine and University Hospital Carl Gustav Carus, Technische Universität Dresden, Dresden, Germany*

⁷*National Center for Tumor Diseases (NCT) Dresden, Dresden, 01307, Germany*

⁸*Department of Particle Therapy, University Hospital Essen, University of Duisburg-Essen, Essen, Germany*

⁹*DFG Cluster of Excellence Physics of Life, TU Dresden*

¹⁰*TU Dortmund, Dortmund, Germany*

[†]*these authors share first-authorship*

[#]*these authors share last-authorship*

January 31, 2021

Contents

1	CBCT image data	3
2	Atlas image data	3
3	MRI image data	4
3.1	Denoising	4
3.1.1	Sequence type: T1	4
3.1.2	Sequence type: T2	11
3.2	Registration (timepoints)	18
3.2.1	Sequence type: T1	18
3.2.2	Sequence type: T2	19
3.3	Warping to CBCT	21
4	Histology image data	22
4.1	Bundle registration	22
4.1.1	0001.Scene_1	22
4.1.2	0001.Scene_2	23
4.1.3	0002.Scene_1	24
4.1.4	0002.Scene_2	24
4.1.5	0003.Scene_1	25
4.1.6	0003.Scene_2	26
4.1.7	0004.Scene_1	27
4.1.8	0004.Scene_2	27
4.1.9	0005.Scene_1	28
4.1.10	0005.Scene_2	29
4.1.11	0006.Scene_1	30
4.1.12	0006.Scene_2	30
4.1.13	0007.Scene_1	31
4.1.14	0007.Scene_2	32
4.1.15	0008.Scene_1	33
4.1.16	0008.Scene_2	33
4.1.17	0009.Scene_1	34
4.1.18	0009.Scene_2	35
4.1.19	0010.Scene_1	36
4.1.20	0010.Scene_2	36
4.1.21	0011.Scene_1	37
4.1.22	0011.Scene_2	38
4.1.23	0012.Scene_1	39
4.1.24	0012.Scene_2	39
4.1.25	0013.Scene_1	40
4.1.26	0013.Scene_2	41
4.1.27	0014.Scene_1	42
4.1.28	0014.Scene_2	42
4.2	Slice2Volume	43

1 CBCT image data

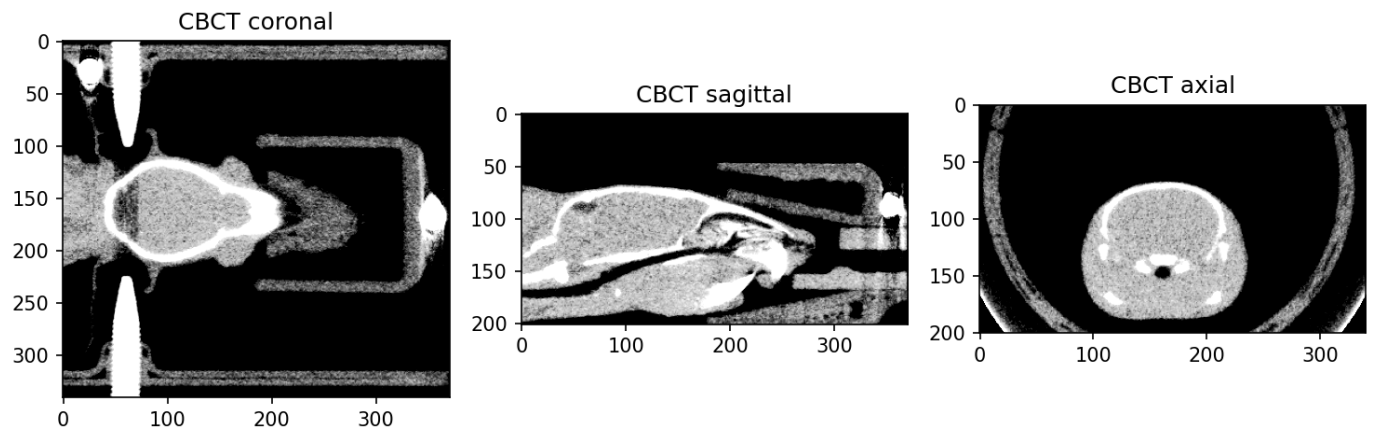


Figure 1.1: Multi-view cutplanes of CBCT serving as anatomical reference

2 Atlas image data

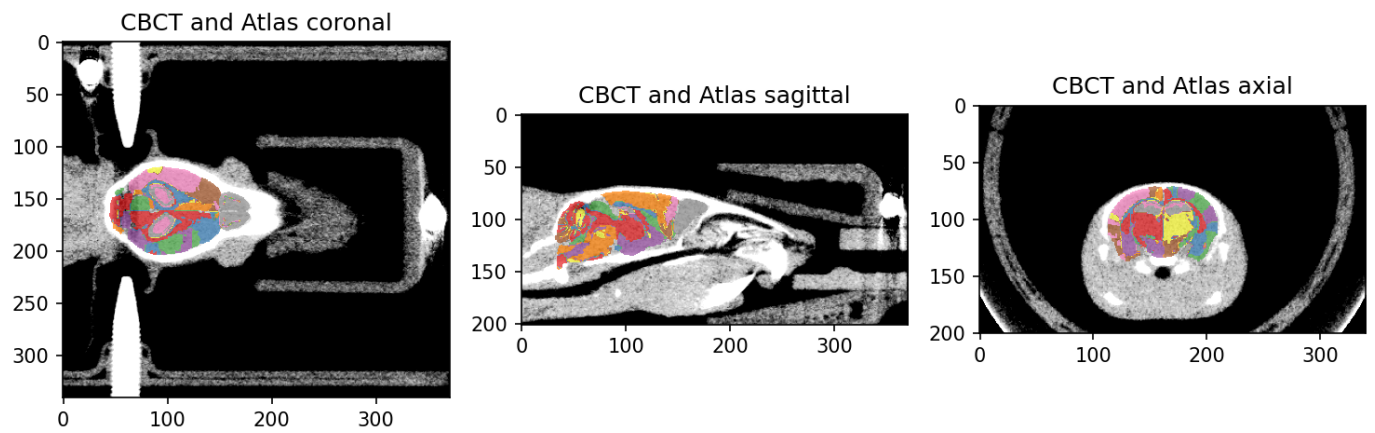


Figure 2.1: Overlay of CBCT and registered DSURQE brain atlas

3 MRI image data

3.1 Denoising

3.1.1 Sequence type: T1

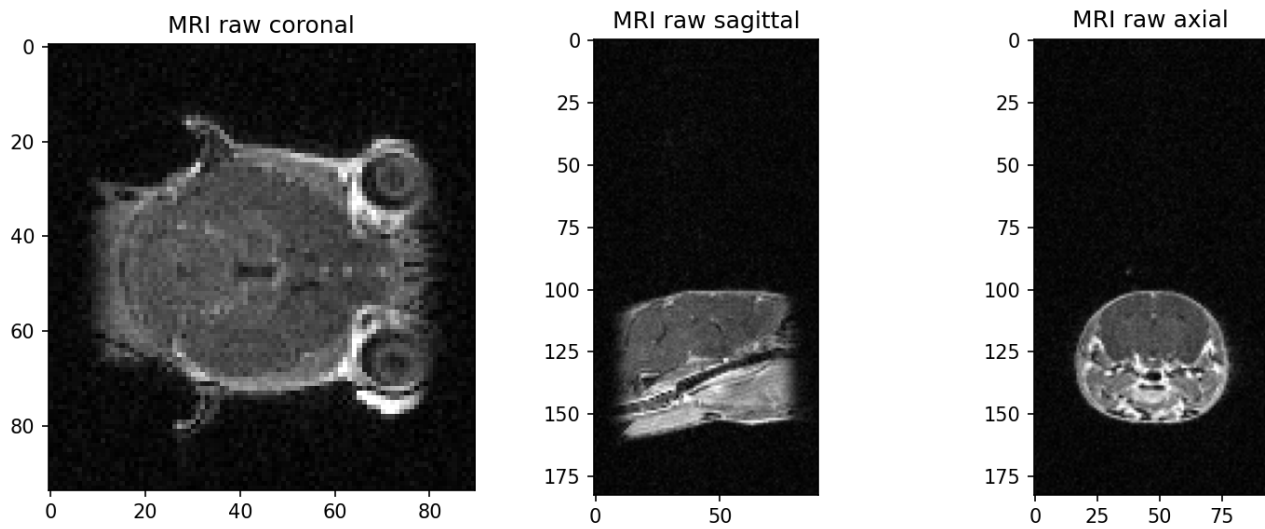


Figure 3.1: Raw MRI image, Timepoint:Week_00, Sequence type: T1

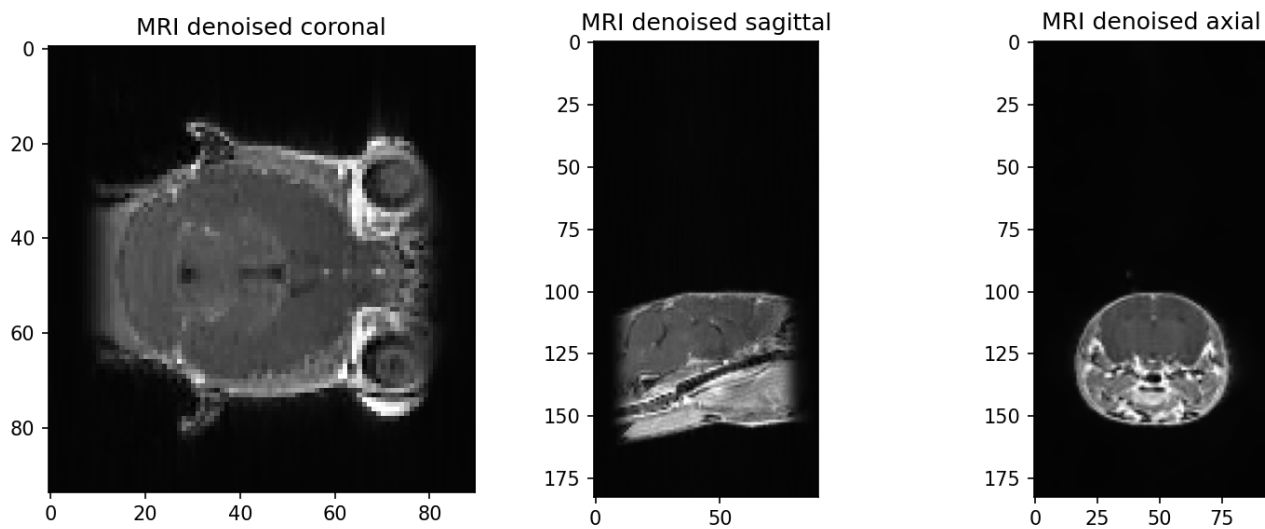


Figure 3.2: Denoised MRI image, Timepoint:Week_00, Sequence type: T1

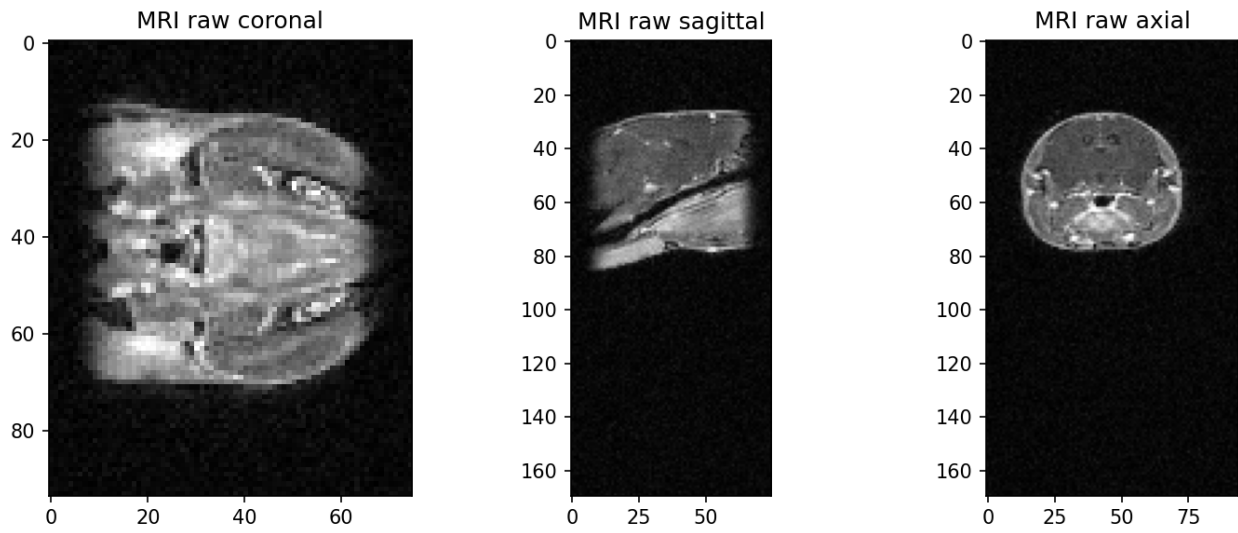


Figure 3.3: Raw MRI image, Timepoint:Week.01, Sequence type: T1

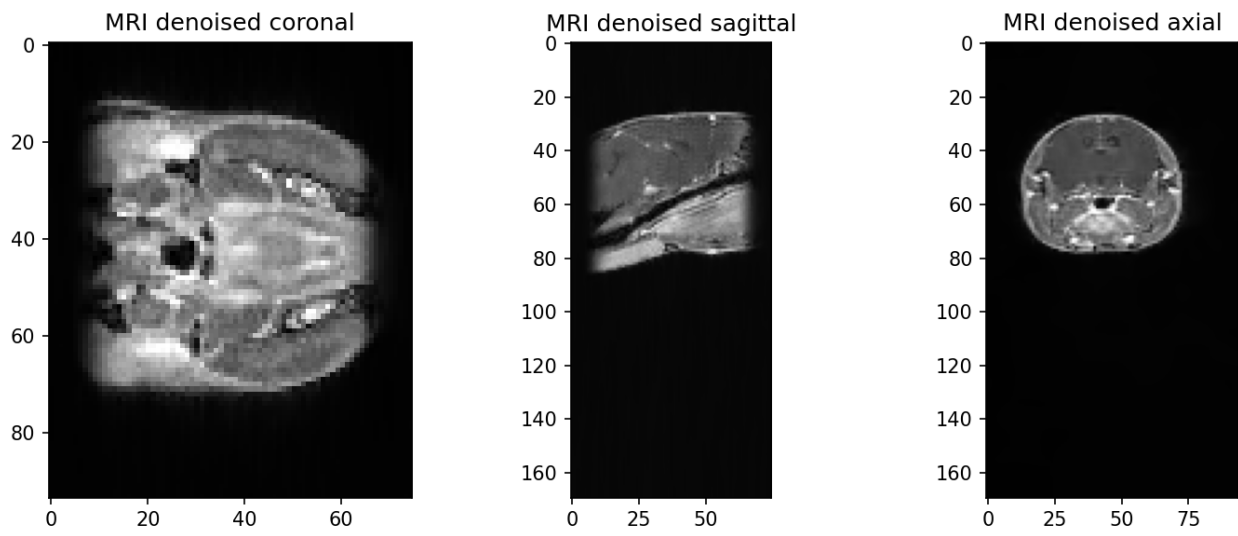


Figure 3.4: Denoised MRI image, Timepoint:Week.01, Sequence type: T1

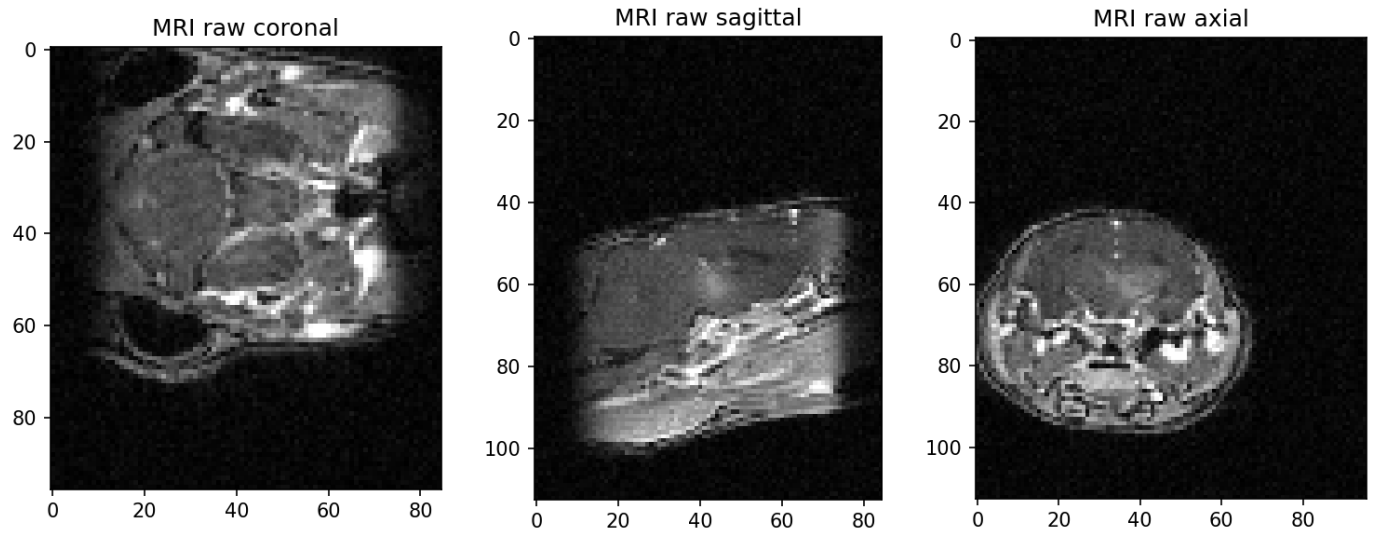


Figure 3.5: Raw MRI image, Timepoint:Week.03, Sequence type: T1

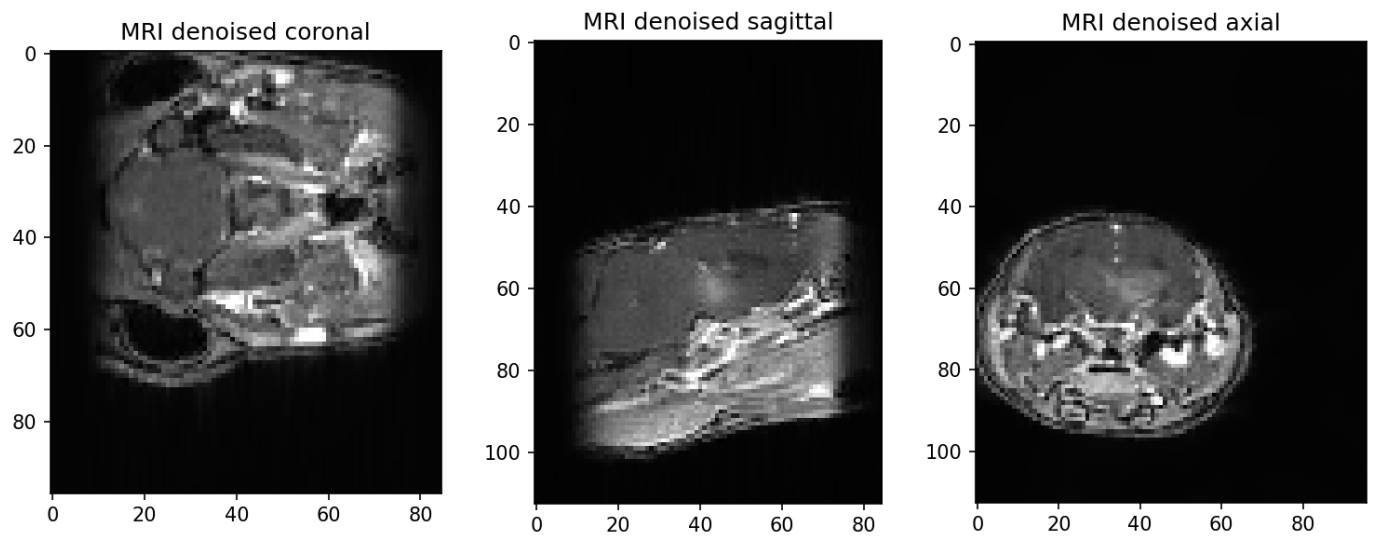


Figure 3.6: Denoised MRI image, Timepoint:Week.03, Sequence type: T1

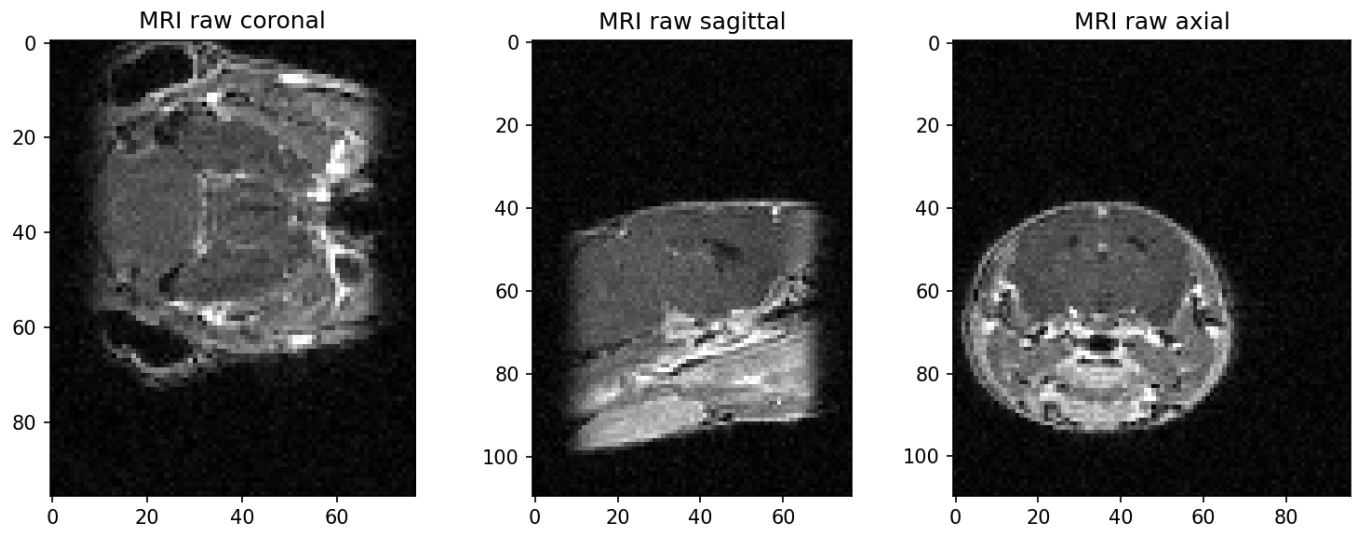


Figure 3.7: Raw MRI image, Timepoint:Week_09, Sequence type: T1

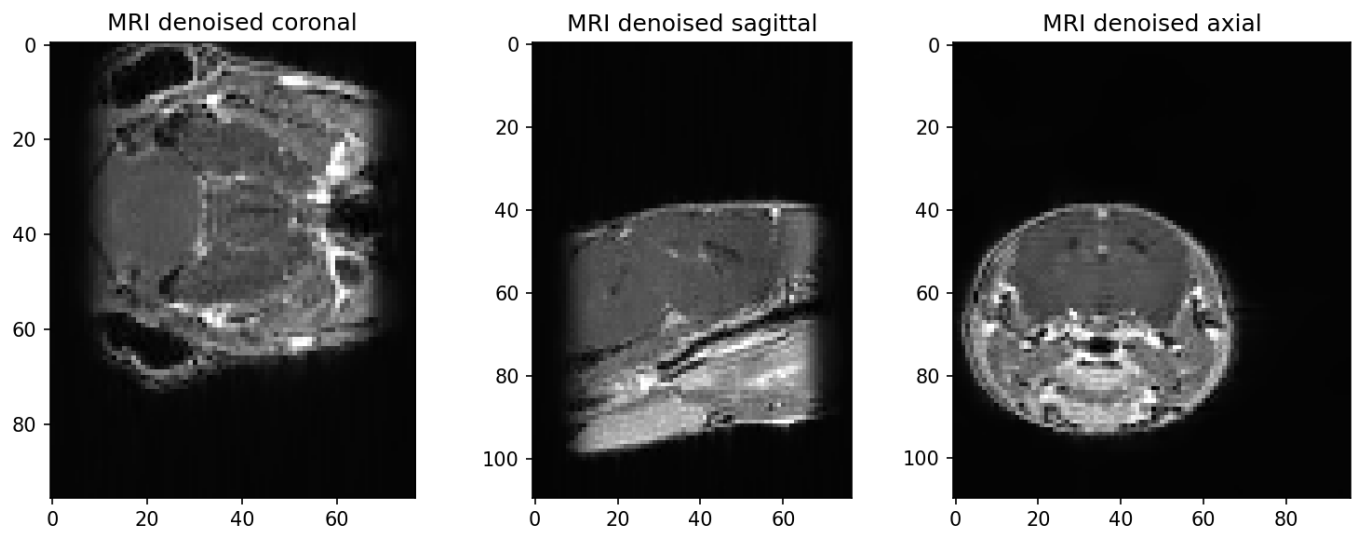


Figure 3.8: Denoised MRI image, Timepoint:Week_09, Sequence type: T1

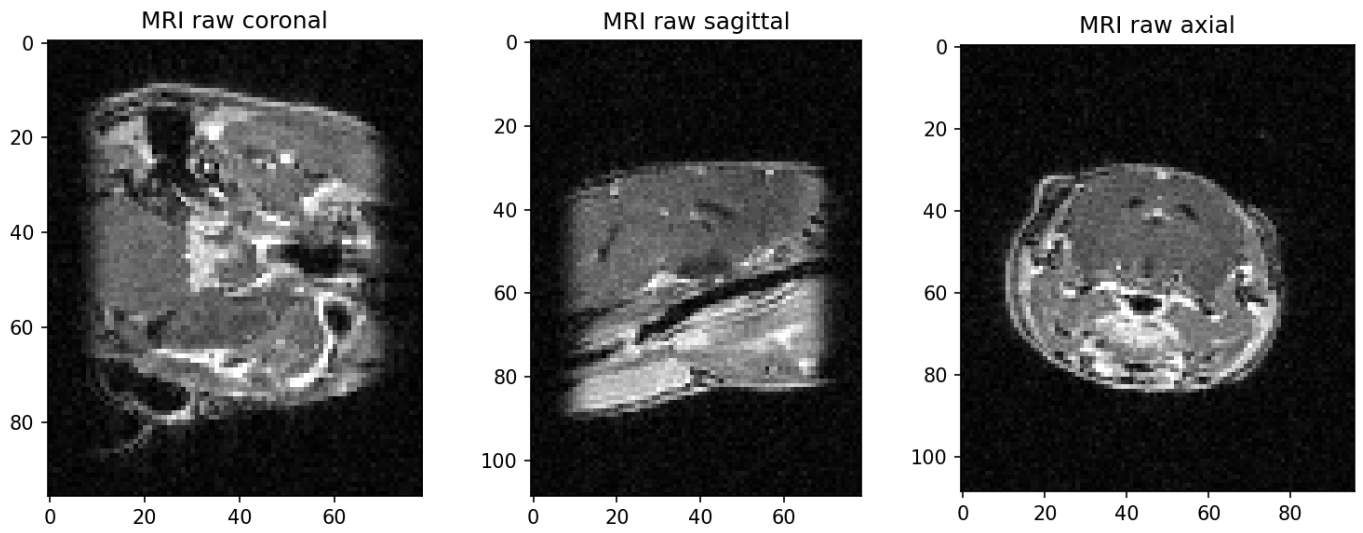


Figure 3.9: Raw MRI image, Timepoint:Week_13, Sequence type: T1

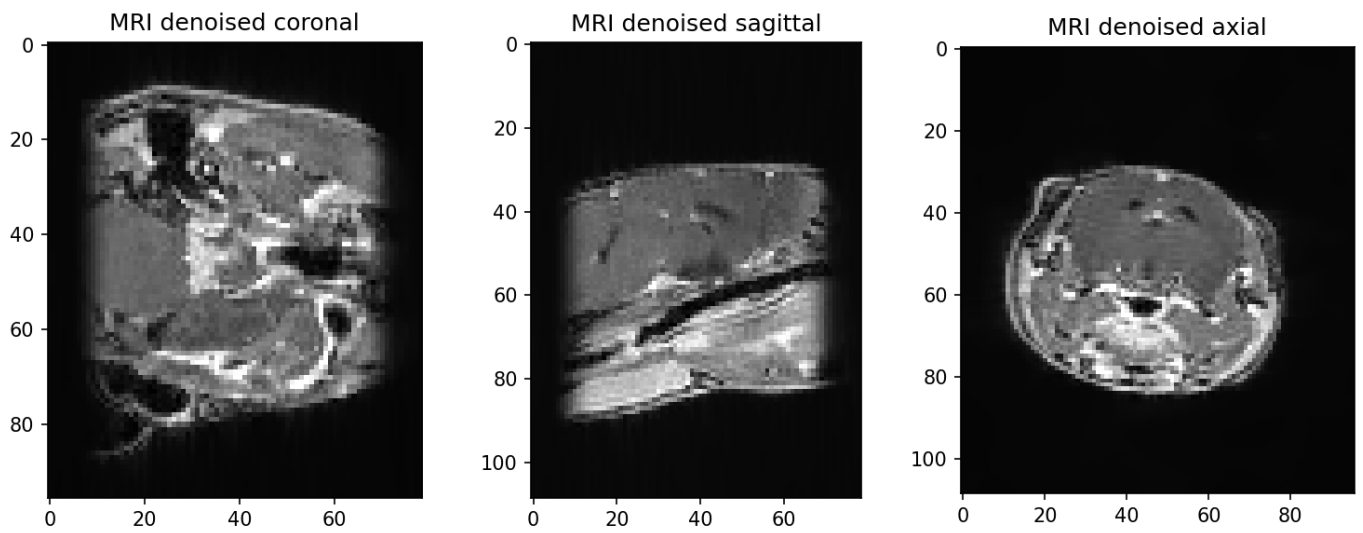


Figure 3.10: Denoised MRI image, Timepoint:Week_13, Sequence type: T1

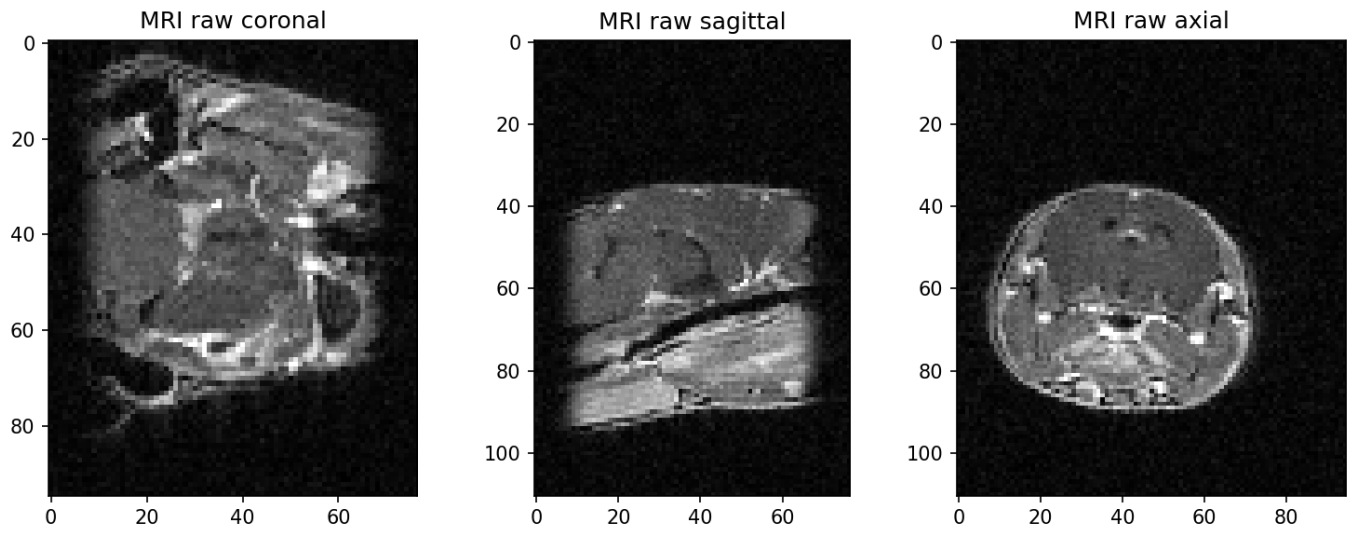


Figure 3.11: Raw MRI image, Timepoint:Week_16, Sequence type: T1

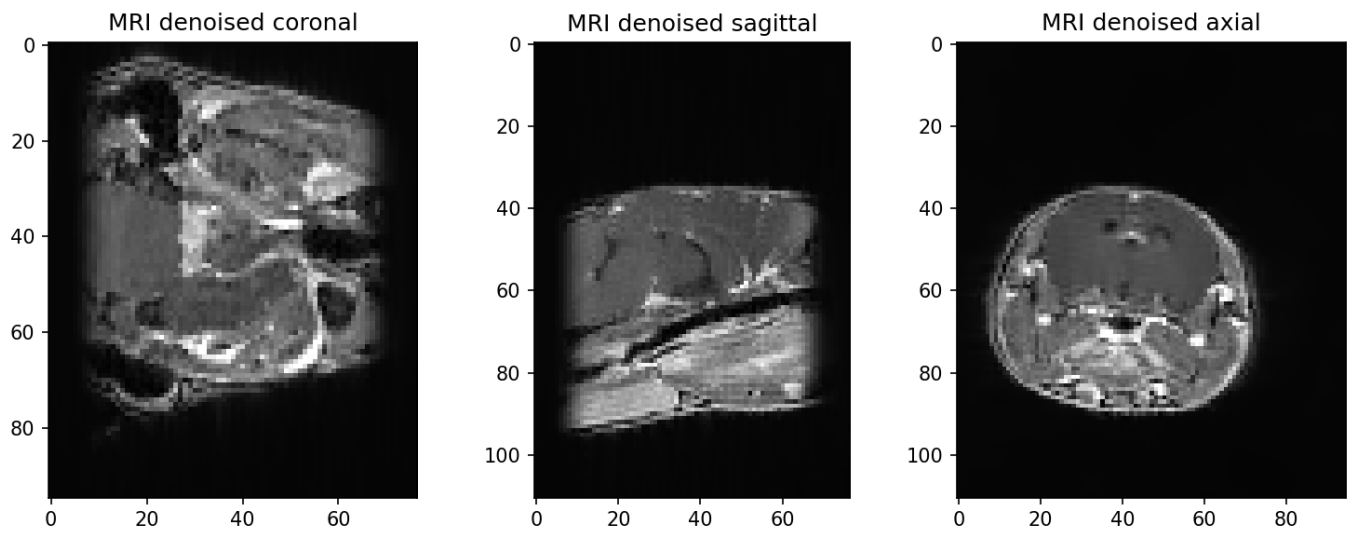


Figure 3.12: Denoised MRI image, Timepoint:Week_16, Sequence type: T1

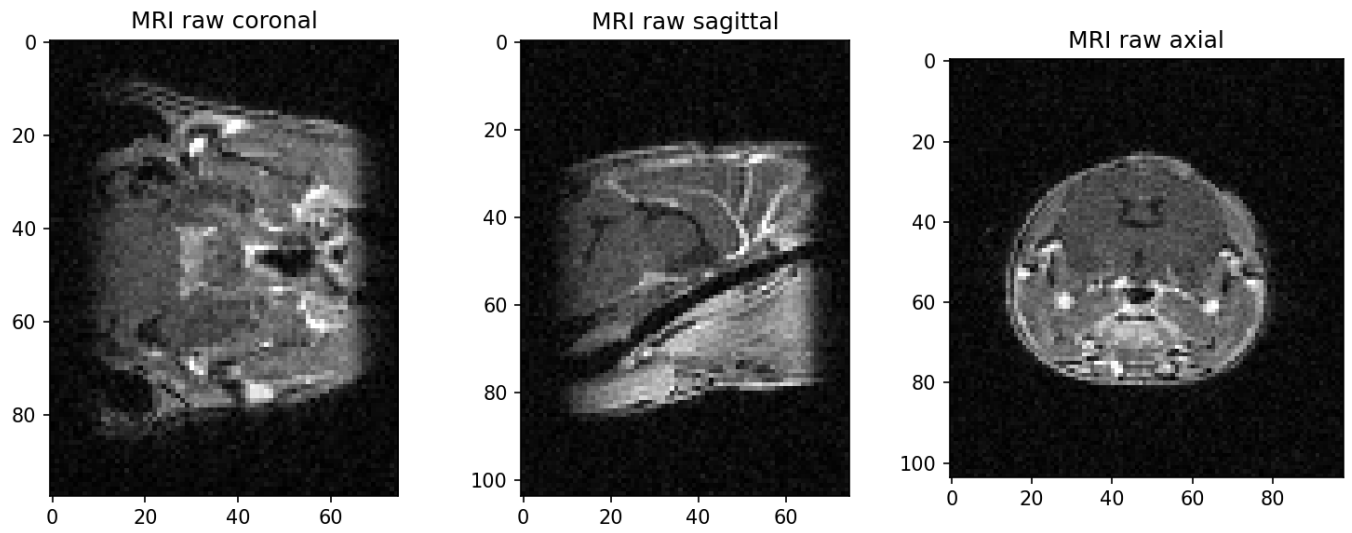


Figure 3.13: Raw MRI image, Timepoint:Week_25, Sequence type: T1

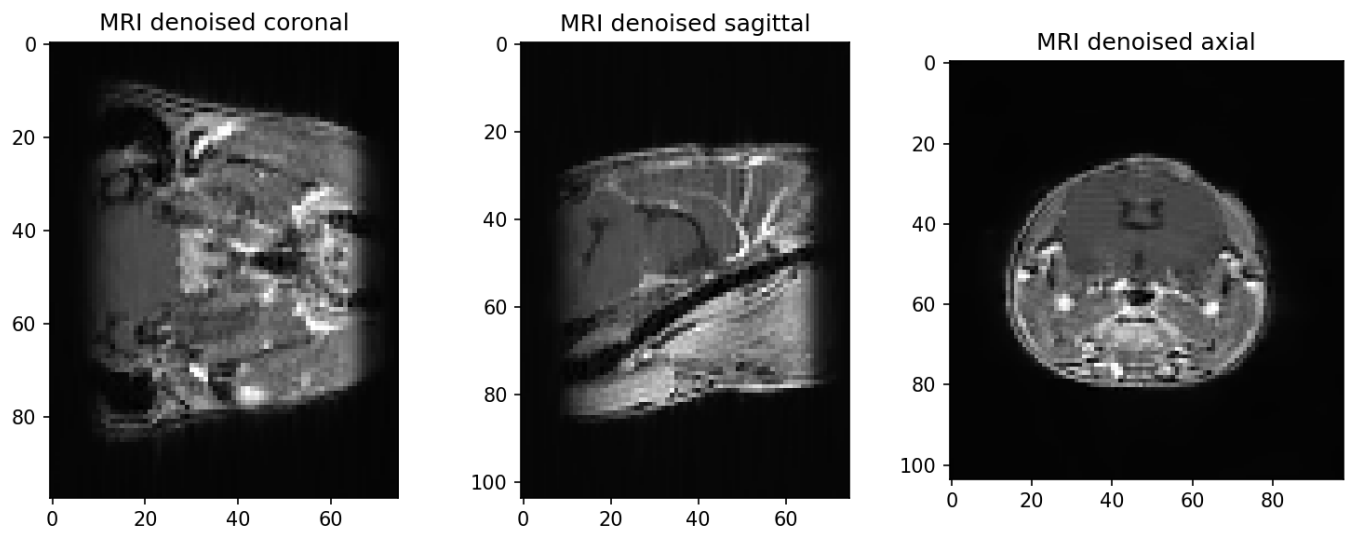


Figure 3.14: Denoised MRI image, Timepoint:Week_25, Sequence type: T1

3.1.2 Sequence type: T2

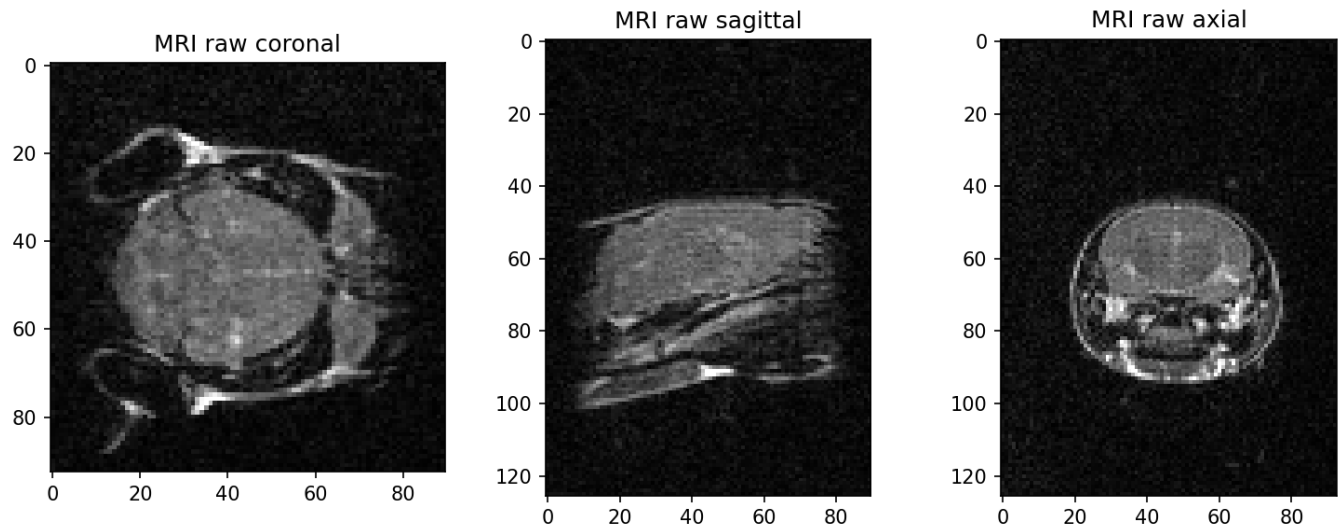


Figure 3.15: Raw MRI image, Timepoint:Week_00, Sequence type: T2

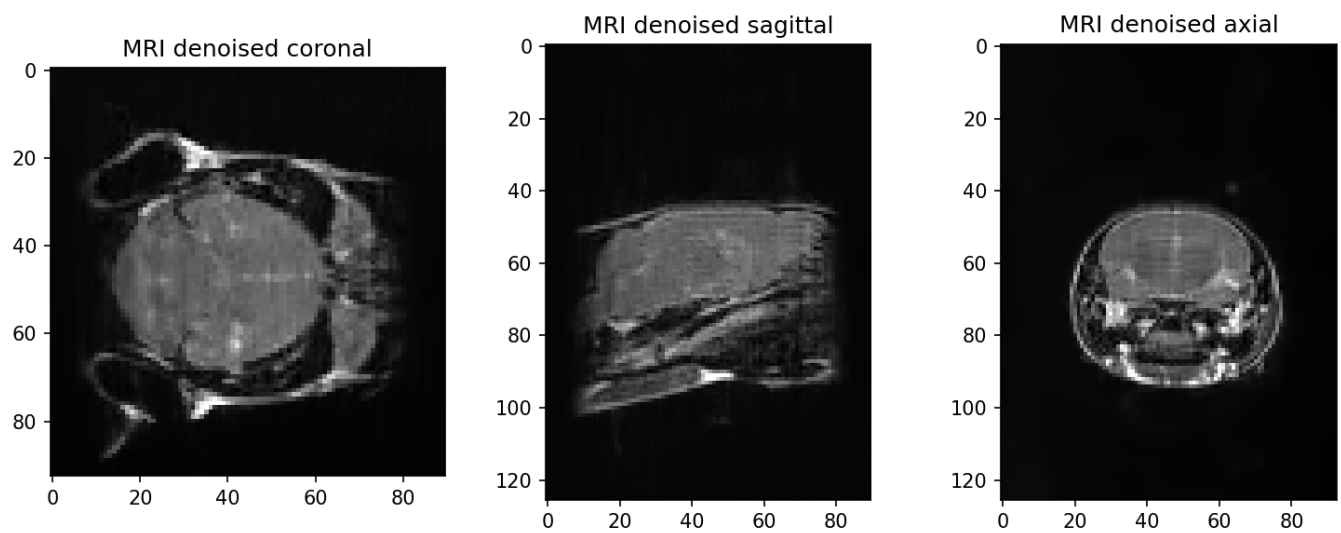


Figure 3.16: Denoised MRI image, Timepoint:Week_00, Sequence type: T2

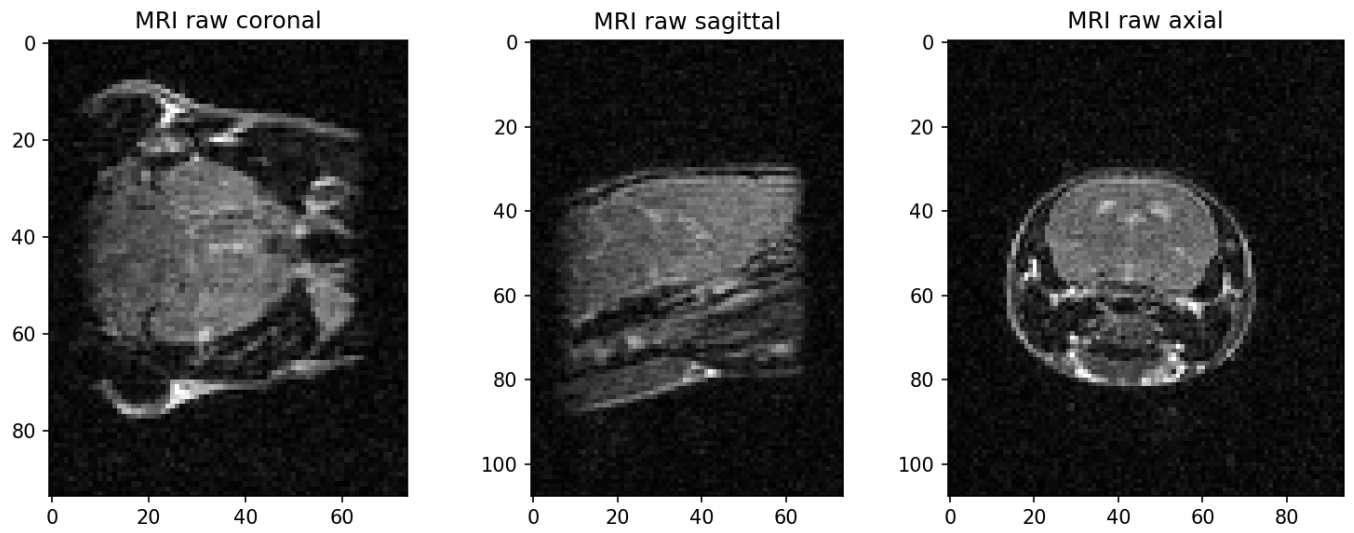


Figure 3.17: Raw MRI image, Timepoint:Week_01, Sequence type: T2

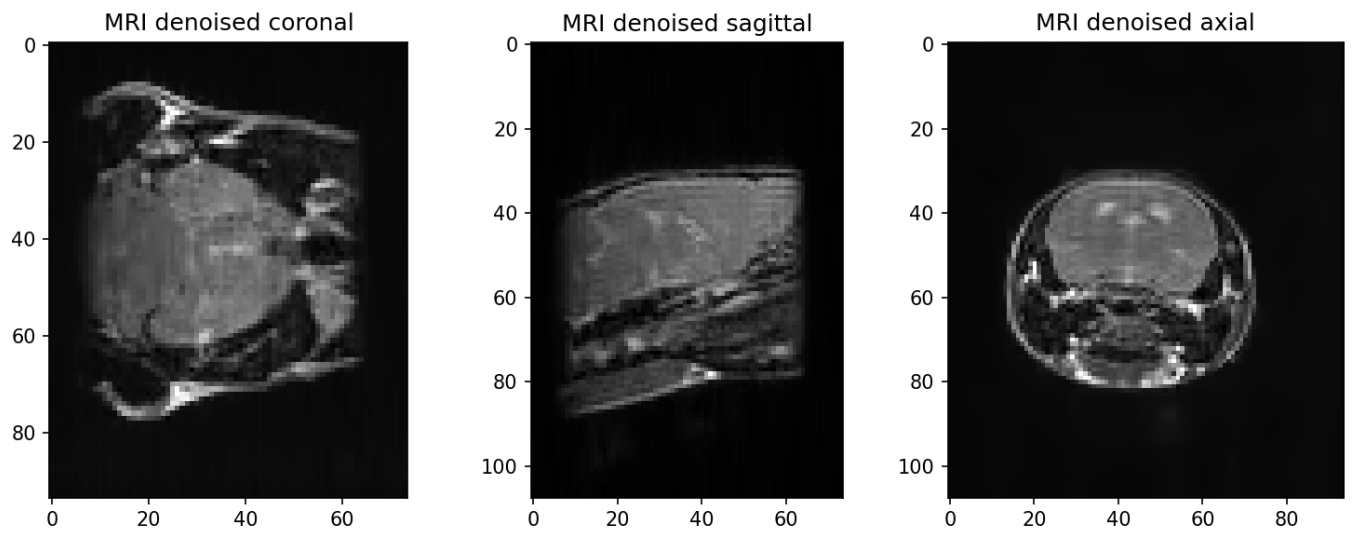


Figure 3.18: Denoised MRI image, Timepoint:Week_01, Sequence type: T2

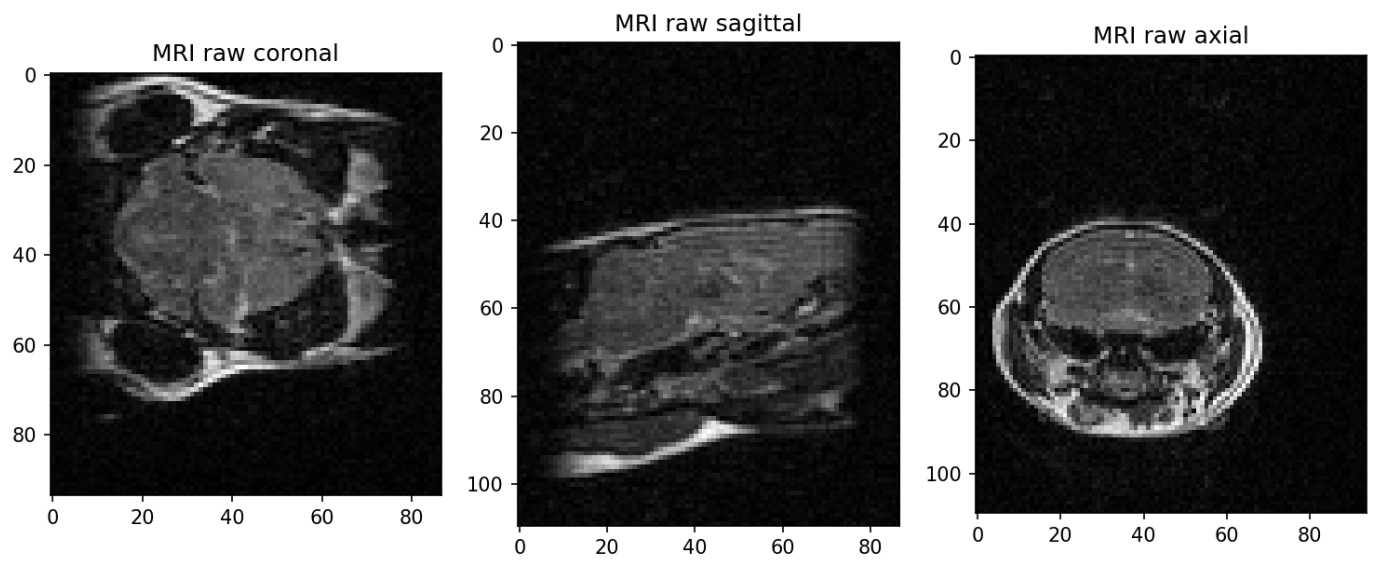


Figure 3.19: Raw MRI image, Timepoint:Week_03, Sequence type: T2

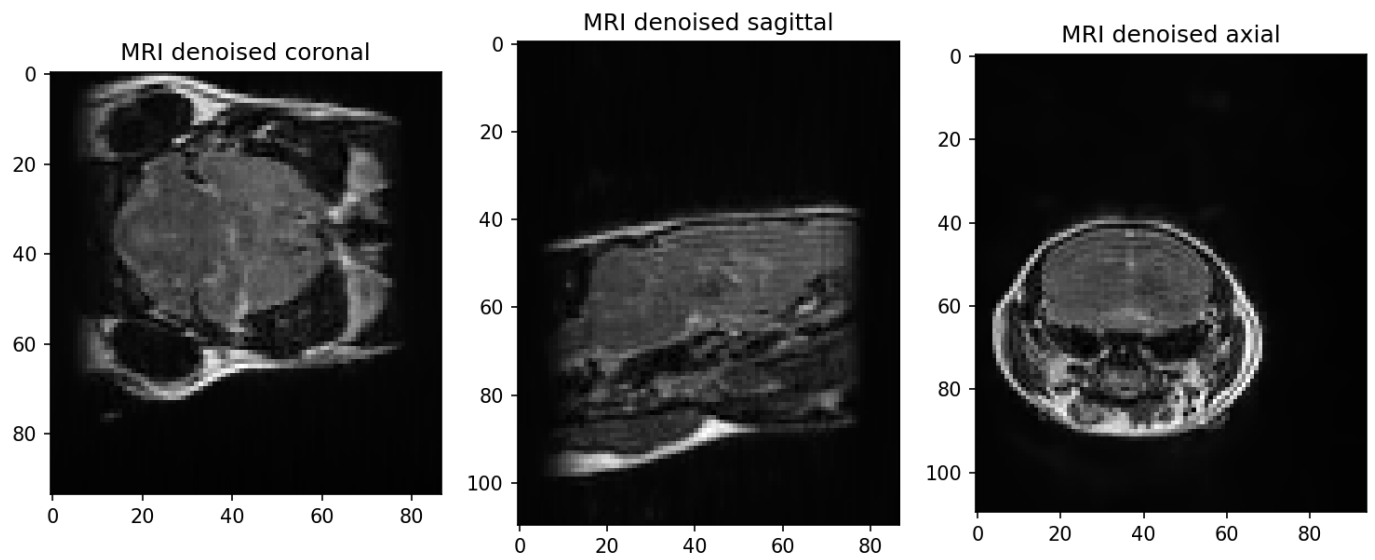


Figure 3.20: Denoised MRI image, Timepoint:Week_03, Sequence type: T2

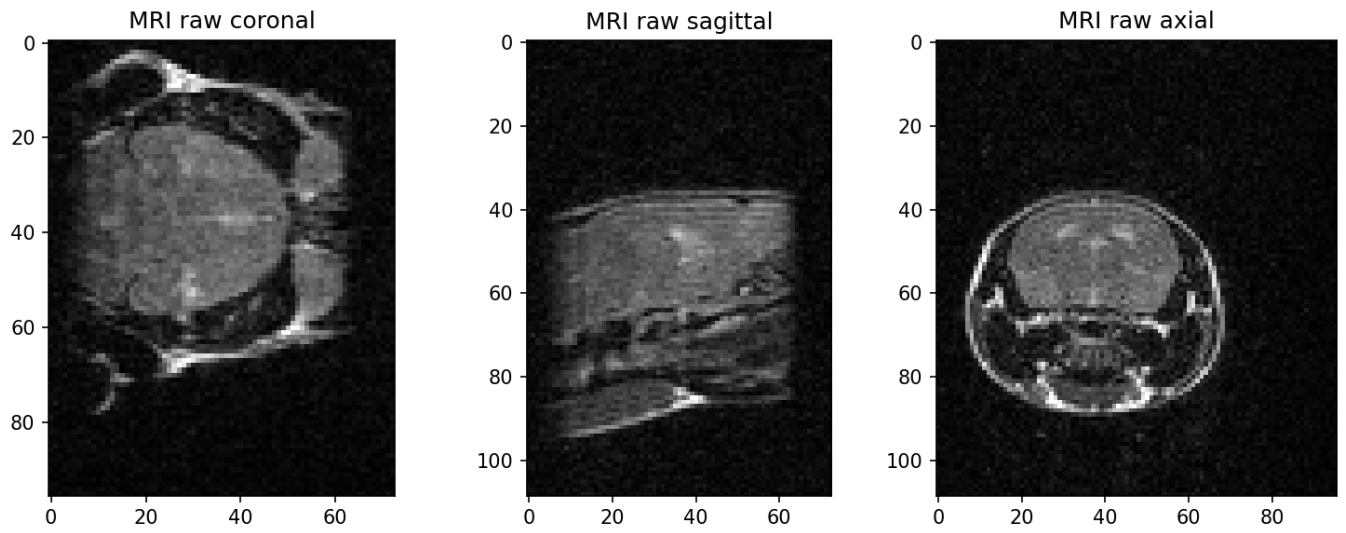


Figure 3.21: Raw MRI image, Timepoint:Week_09, Sequence type: T2

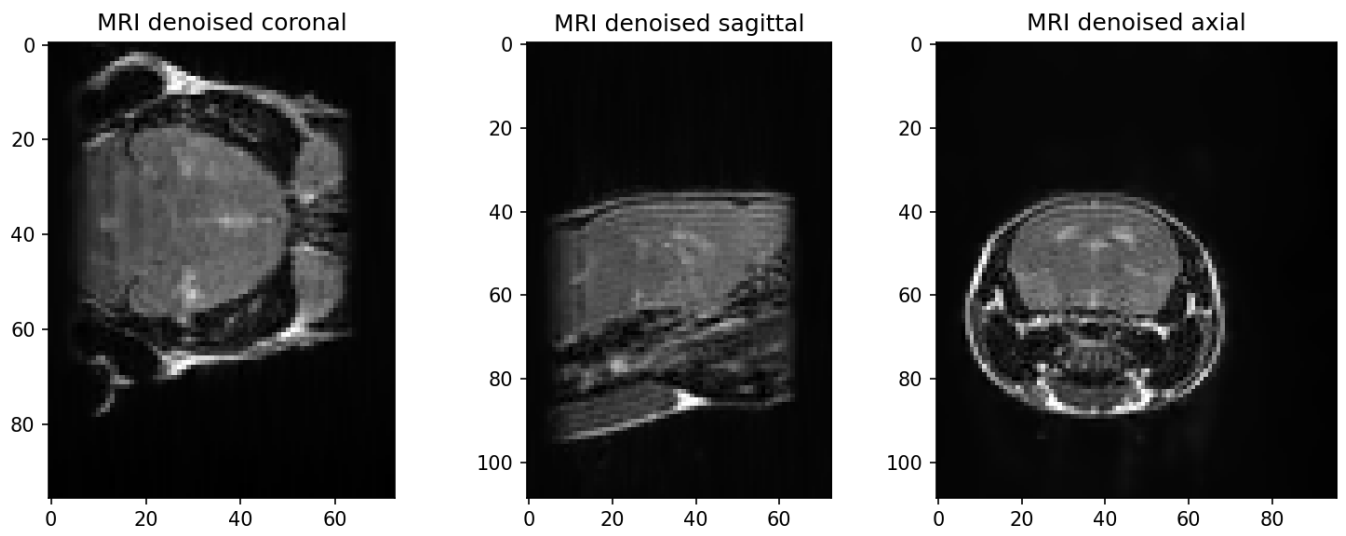


Figure 3.22: Denoised MRI image, Timepoint:Week_09, Sequence type: T2

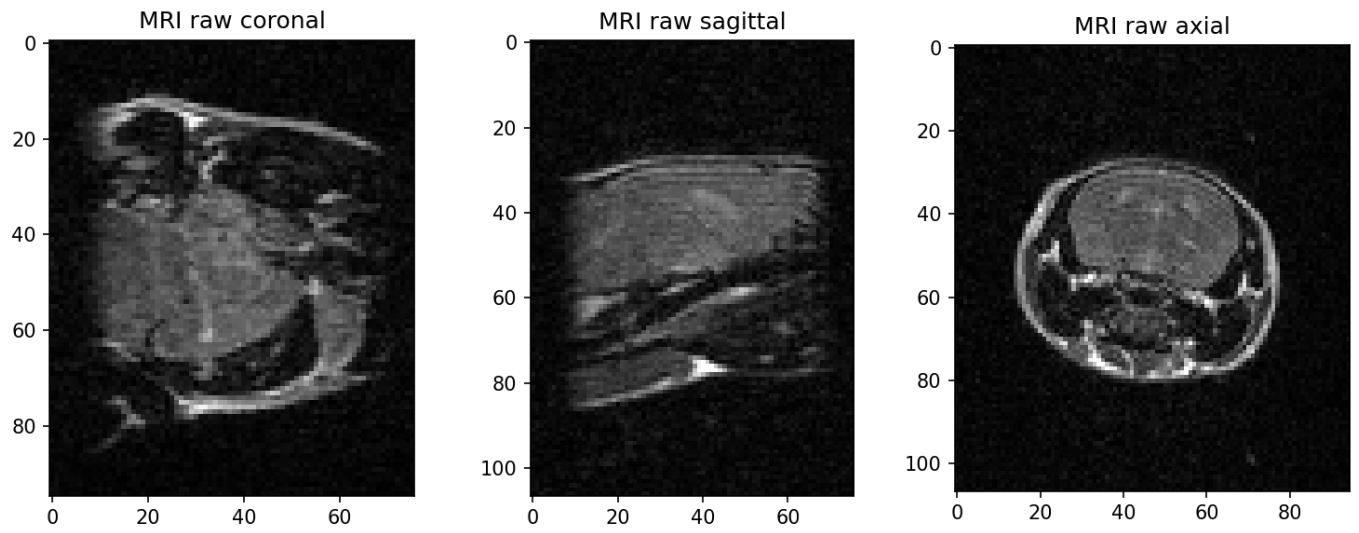


Figure 3.23: Raw MRI image, Timepoint:Week_13, Sequence type: T2

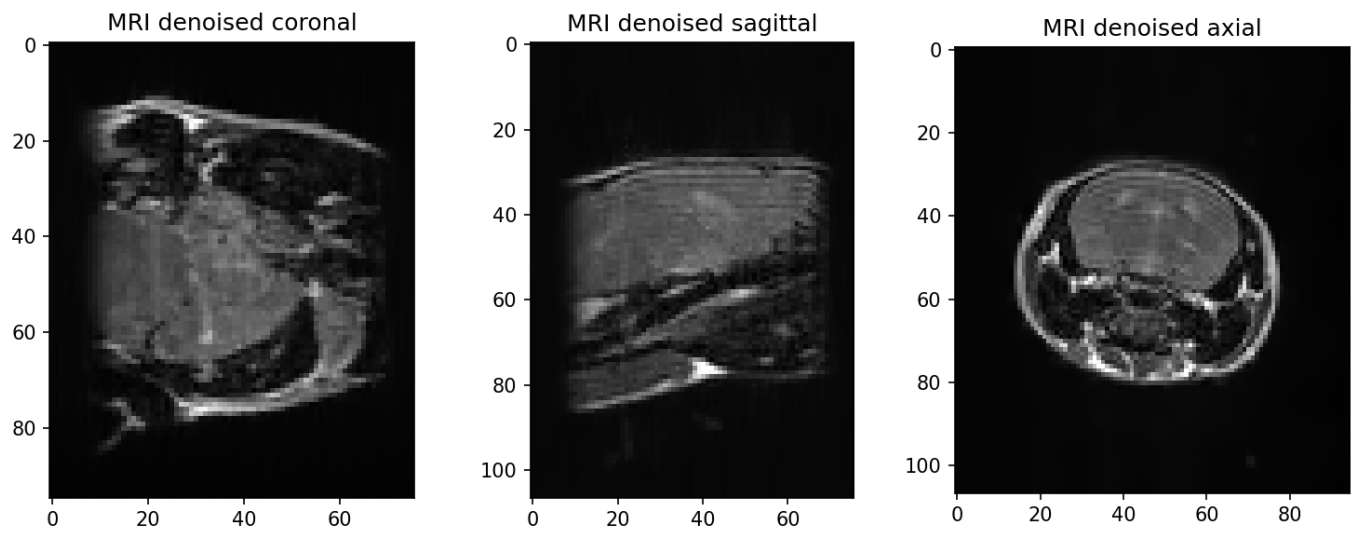


Figure 3.24: Denoised MRI image, Timepoint:Week_13, Sequence type: T2

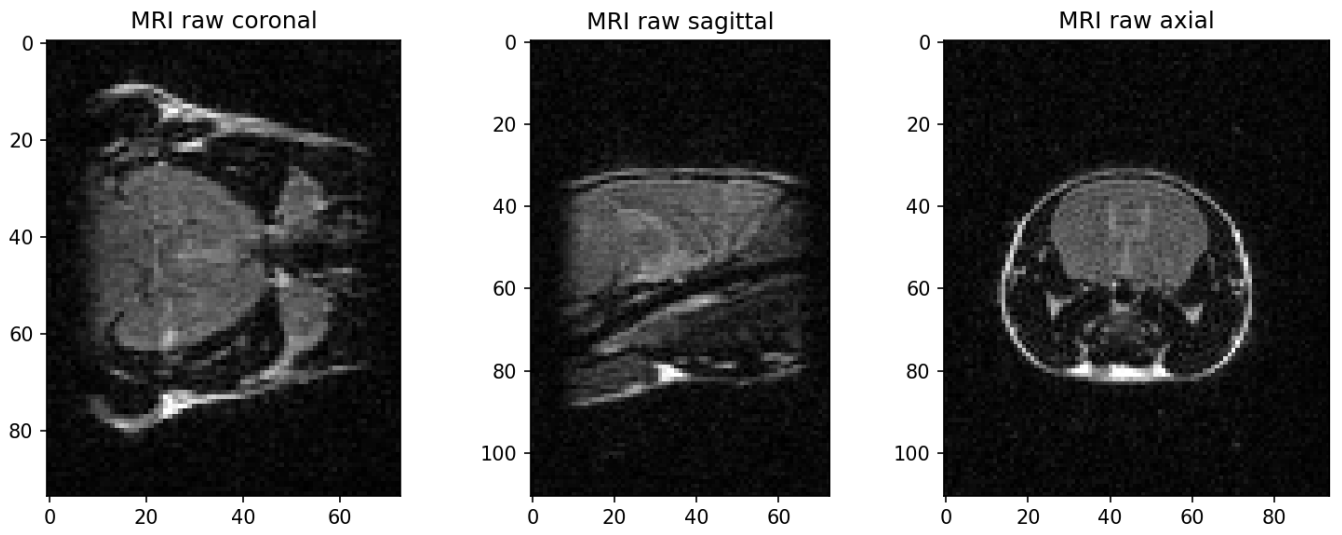


Figure 3.25: Raw MRI image, Timepoint:Week_16, Sequence type: T2

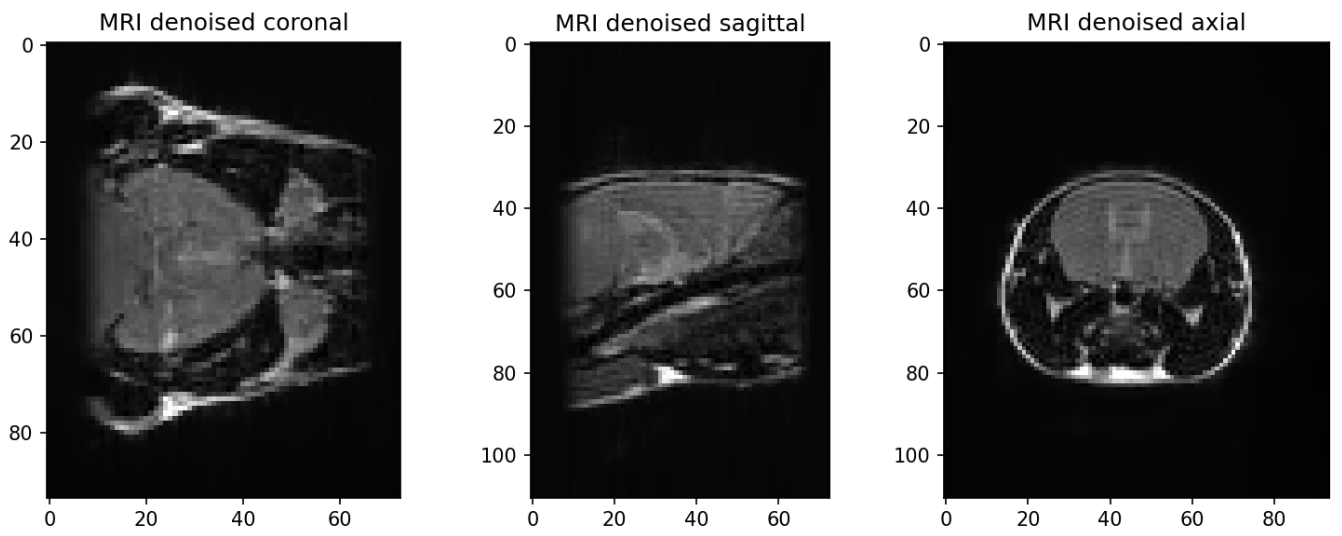


Figure 3.26: Denoised MRI image, Timepoint:Week_16, Sequence type: T2

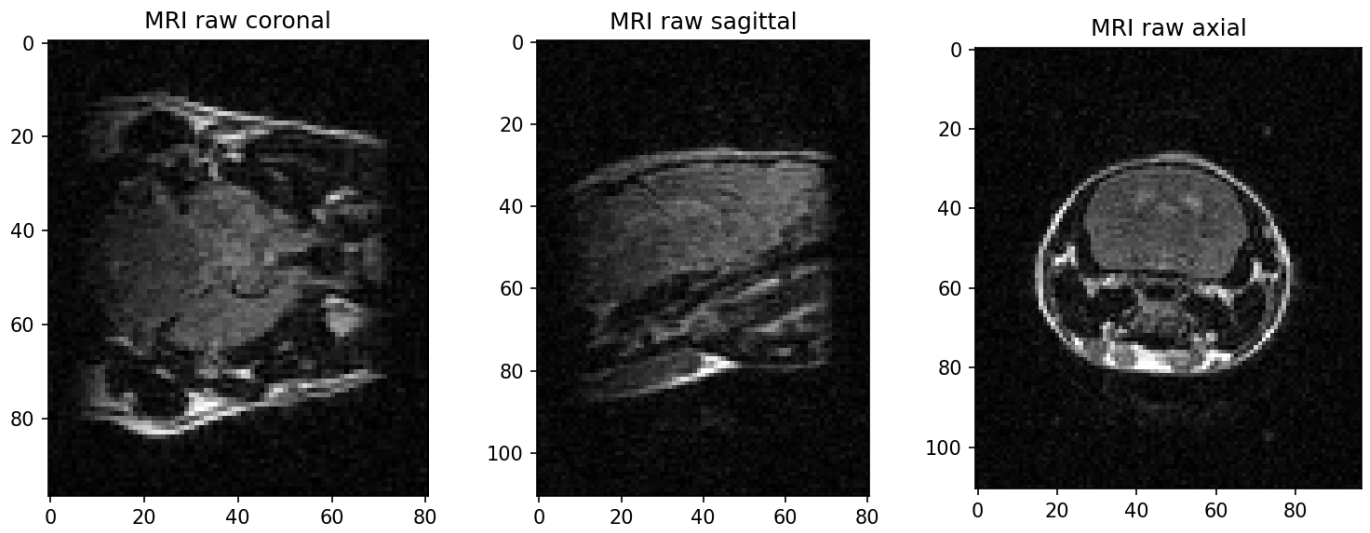


Figure 3.27: Raw MRI image, Timepoint:Week_25, Sequence type: T2

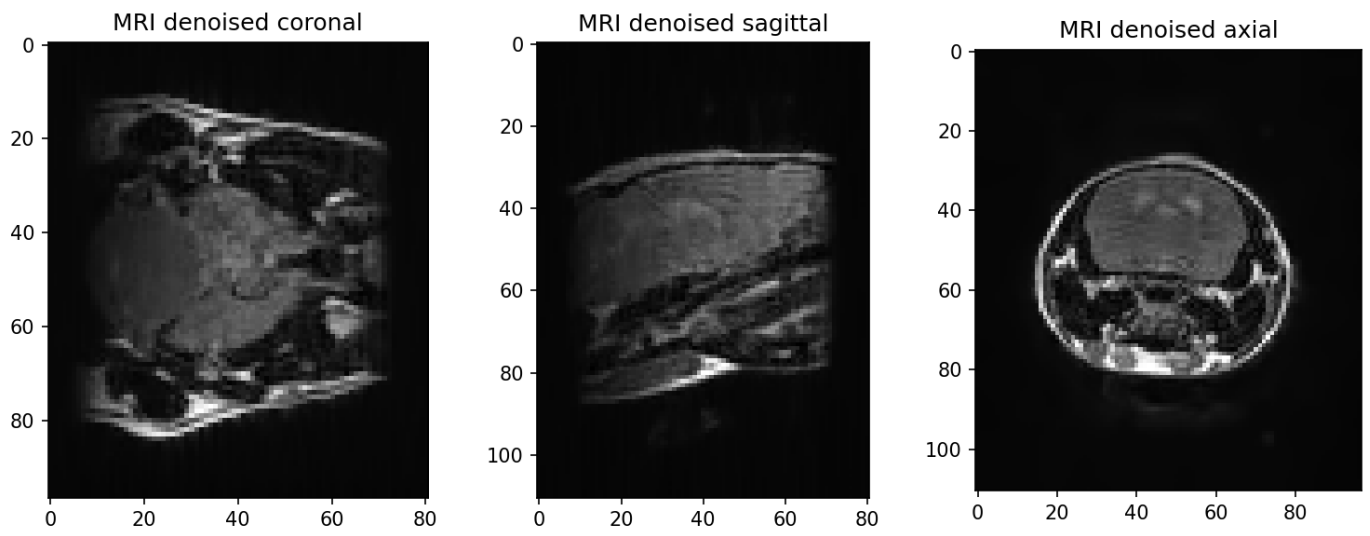


Figure 3.28: Denoised MRI image, Timepoint:Week_25, Sequence type: T2

3.2 Registration (timepoints)

3.2.1 Sequence type: T1

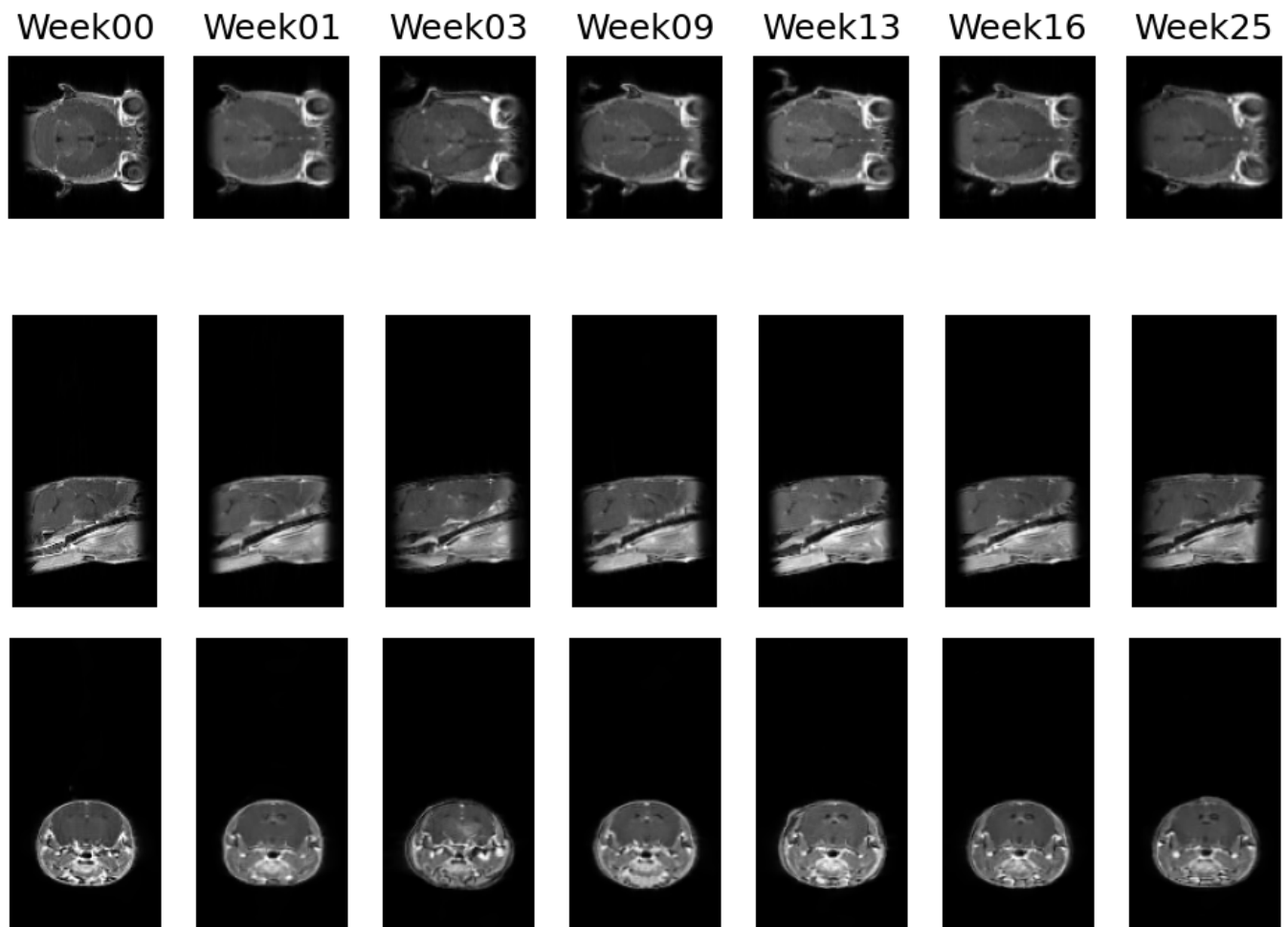


Figure 3.29: Gallery of registered MRI images , Sequence type: T1

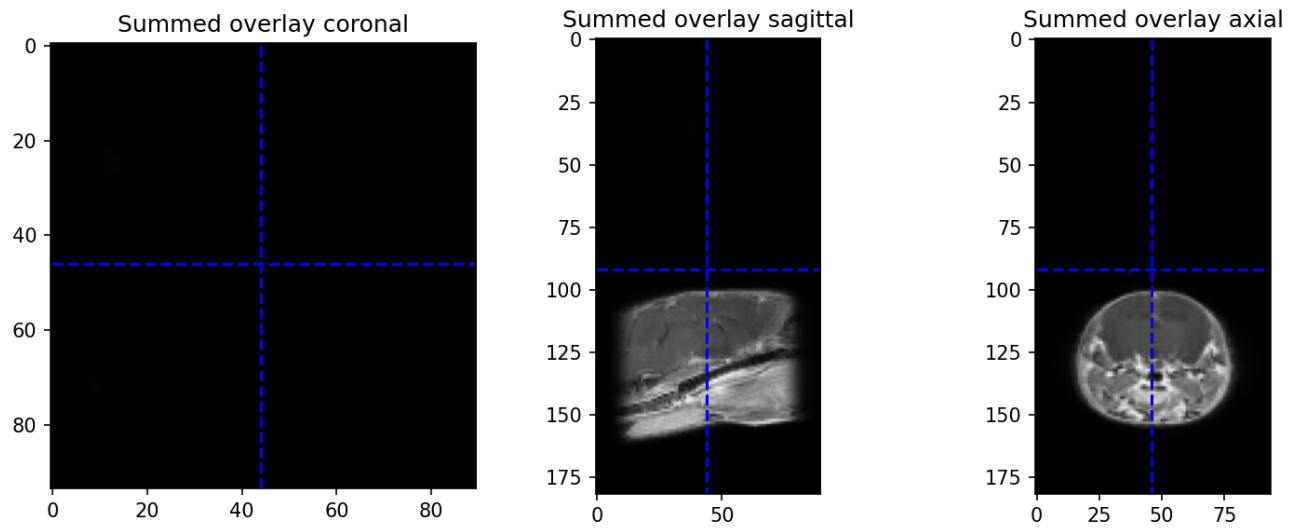


Figure 3.30: Summed overlay of registered MRI images , Sequence type: T1

3.2.2 Sequence type: T2

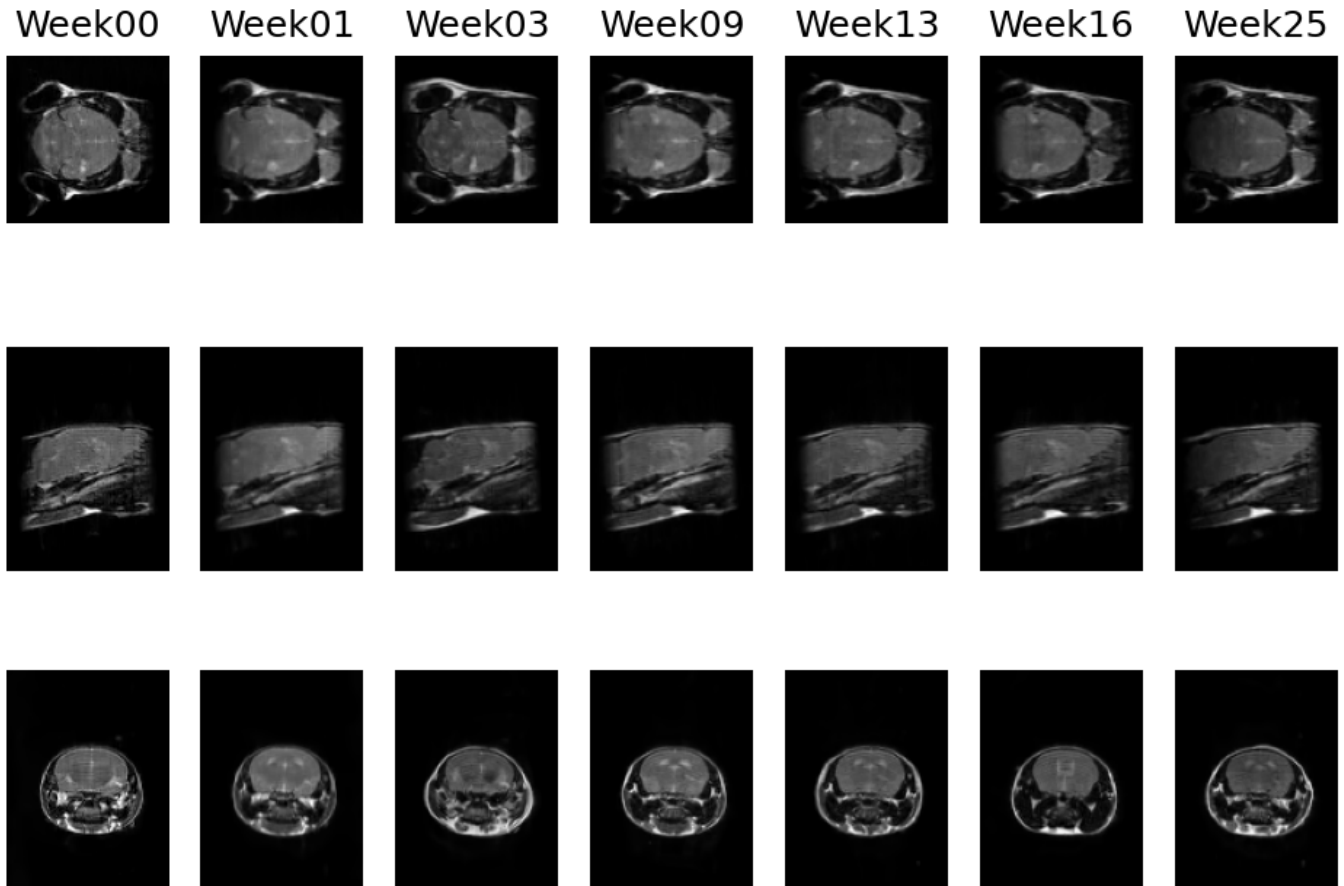


Figure 3.31: Gallery of registered MRI images , Sequence type: T2

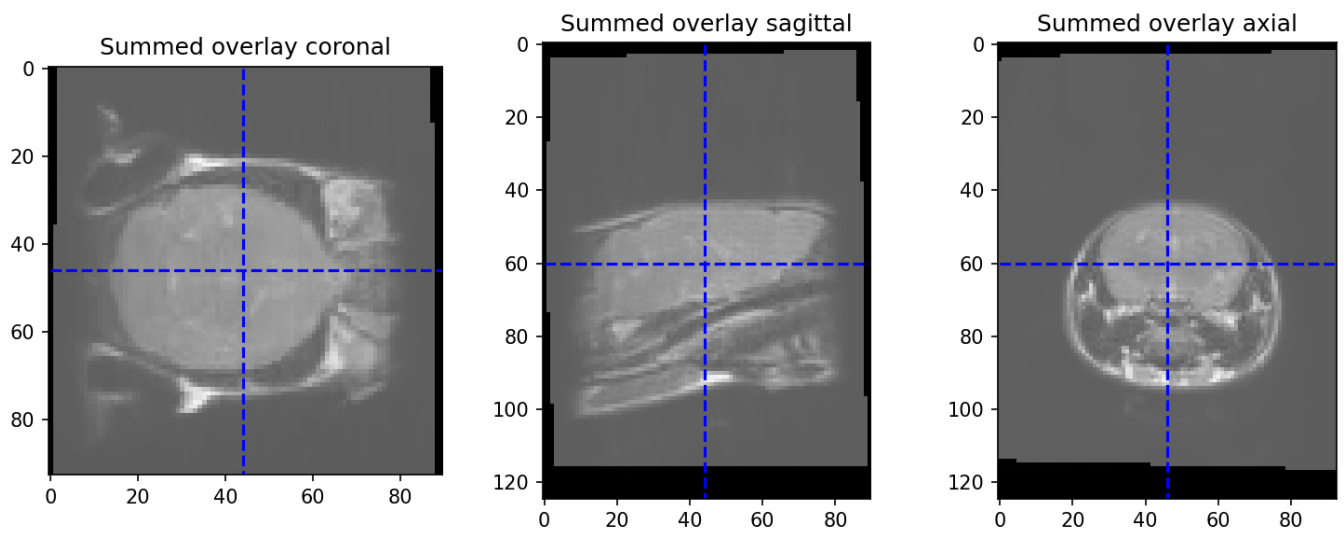


Figure 3.32: Summed overlay of registered MRI images , Sequence type: T2

3.3 Warping to CBCT

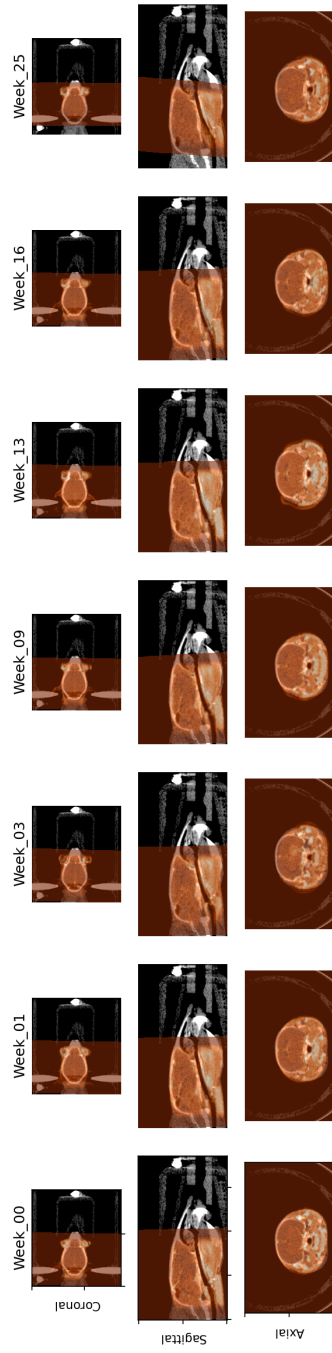


Figure 3.33: Gallery of CBCT (gray) and warped MRI images (orange) , Sequence type: T1

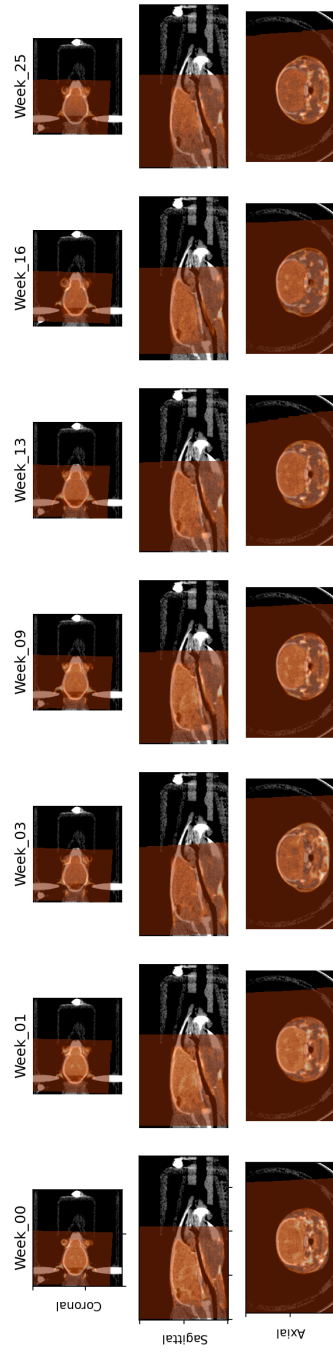


Figure 3.34: Gallery of CBCT (gray) and warped MRI images (orange) , Sequence type: T2

4 Histology image data

4.1 Bundle registration

Number of section locations:28

Stainings for this sample:

- HE: Hematoxylin & eosin staining
- NOK: NeuN, OSP, Ki-67 and DAPI
- GNI: GFAP, Nestin, Iba1 and DAPI

Note: Pairs of histochemical (e.g. HE) and immunofluorescent (e.g. GNI) images are registered with a contour-based technique, whereas pairs of immunofluorescent images (e.g. GNI and NOK) are registered with an intensity-based method. For the latter, the DAPI canal present in all immunofluorescent stainings serves as registration reference and is displayed in this overview.

4.1.1 0001_Scene_1

Raw images:

- 2020_04_25_GNI__0097-Scene-1.czi
- 2020_04_25_NOK__0124-Scene-1.czi
- P2A.B6.M10.HE.0001-Scene-1-ScanRegion0.czi

Registered stainings: 3/3

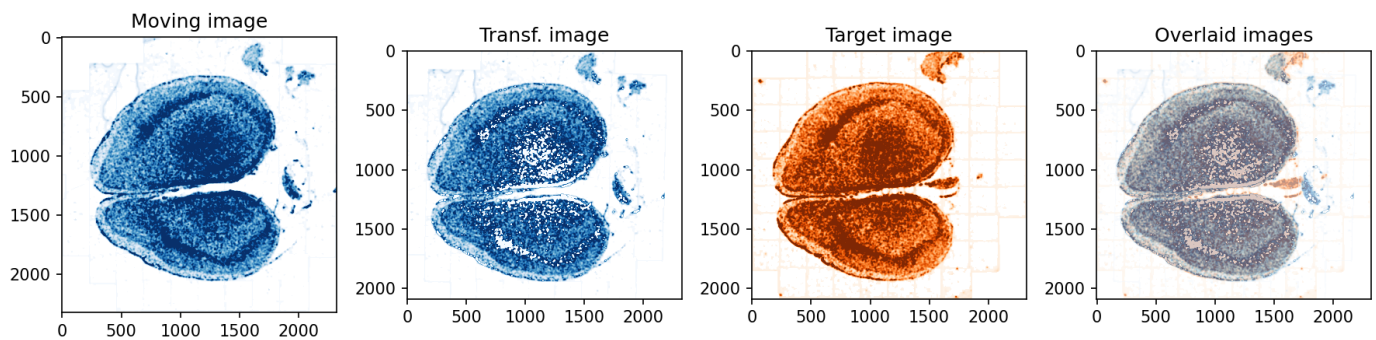


Figure 4.1: Results of registration of image 2020_04_25_NOK__0124-Scene-1 (Moving image) to 2020_04_25_GNI__0097-Scene-1 (Target image)

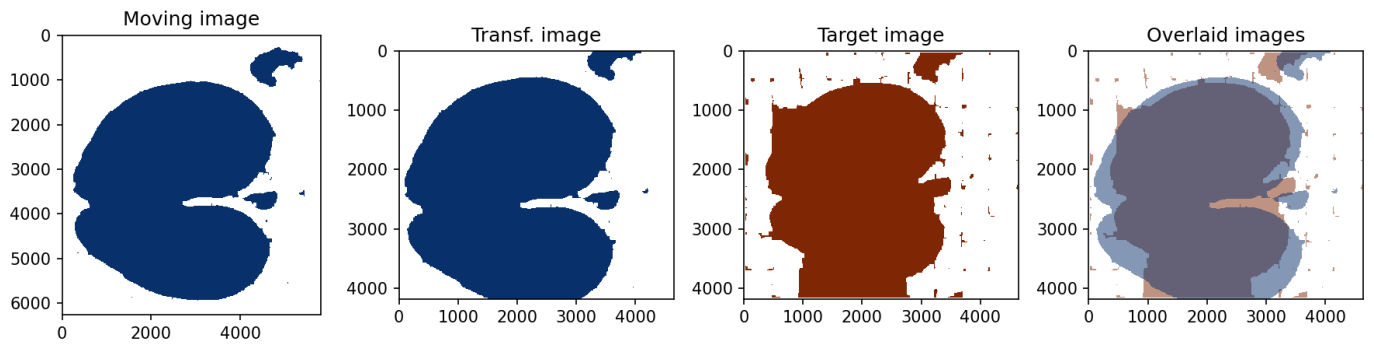


Figure 4.2: Results of registration of image P2A_B6_M10_HE_0001-Scene-1-ScanRegion0 (Moving image) to 2020_04_25_GNI_0097-Scene-1 (Target image)

4.1.2 0001_Scene_2

Raw images:

- 2020_04_25_GNI_0097-Scene-2.czi
- 2020_04_25_NOK_0124-Scene-2.czi
- P2A_B6_M10_HE_0001-Scene-2-ScanRegion1.czi

Registered stainings: 3/3

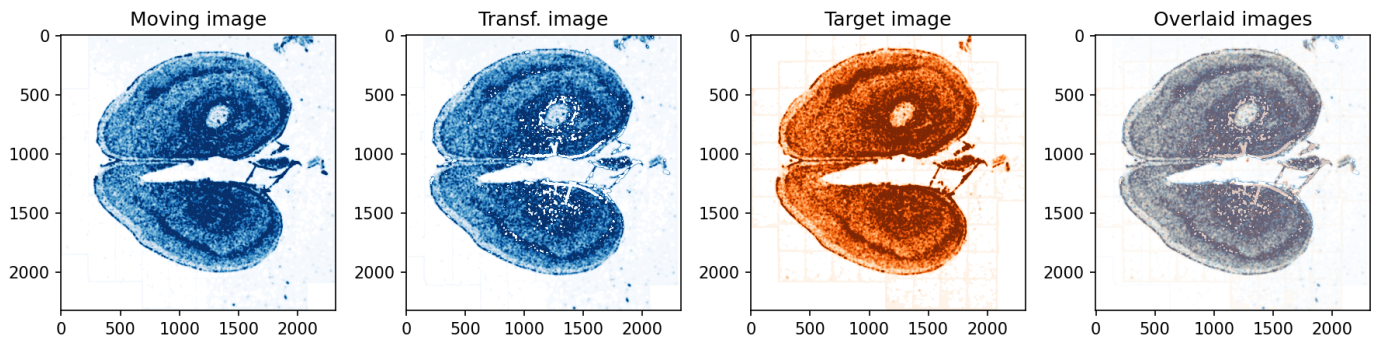


Figure 4.3: Results of registration of image 2020_04_25_NOK_0124-Scene-2 (Moving image) to 2020_04_25_GNI_0097-Scene-2 (Target image)

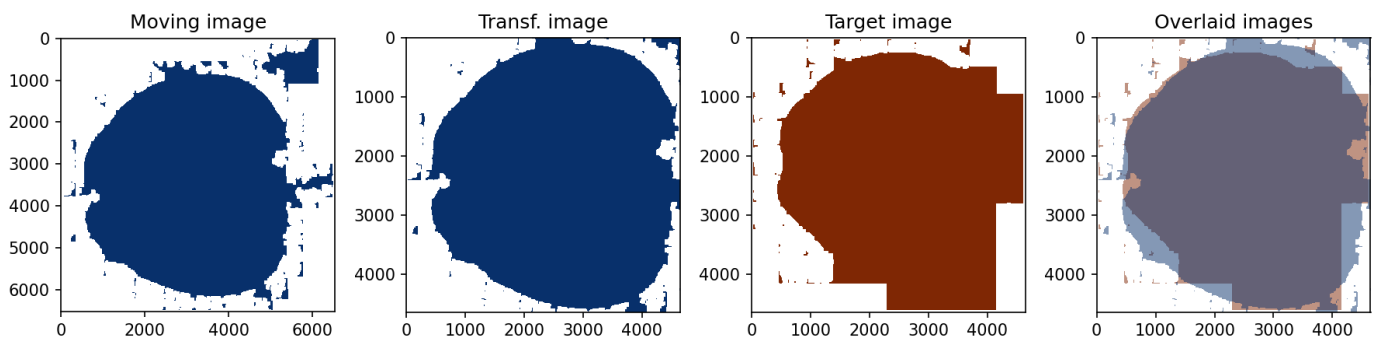


Figure 4.4: Results of registration of image P2A_B6_M10_HE_0001-Scene-2-ScanRegion1 (Moving image) to 2020_04_25_GNI_0097-Scene-2 (Target image)

4.1.3 0002_Scene_1

Raw images:

- 2020_04_25_GNI__0098-Scene-1.czi
- 2020_04_25_NOK__0125-Scene-1.czi
- P2A_B6_M10_HE_0002-Scene-1-ScanRegion0.czi

Registered stainings: 3/3

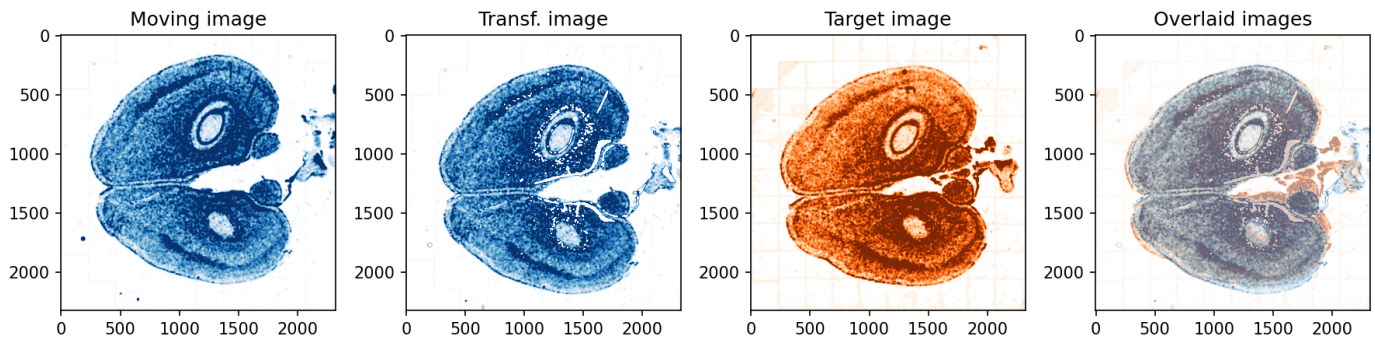


Figure 4.5: Results of registration of image 2020_04_25_NOK__0125-Scene-1 (Moving image) to 2020_04_25_GNI__0098-Scene-1 (Target image)

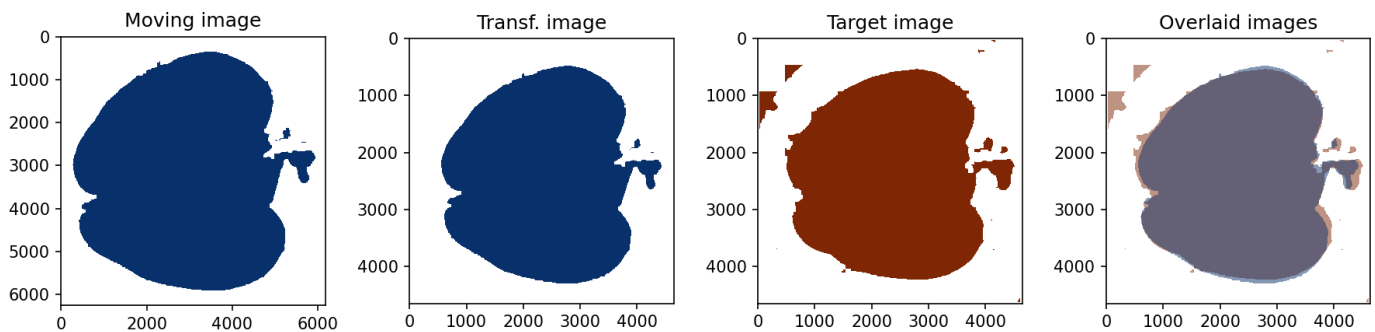


Figure 4.6: Results of registration of image P2A_B6_M10_HE_0002-Scene-1-ScanRegion0 (Moving image) to 2020_04_25_GNI__0098-Scene-1 (Target image)

4.1.4 0002_Scene_2

Raw images:

- 2020_04_25_GNI__0098-Scene-2.czi
- 2020_04_25_NOK__0125-Scene-2.czi
- P2A_B6_M10_HE_0002-Scene-2-ScanRegion1.czi

Registered stainings: 3/3

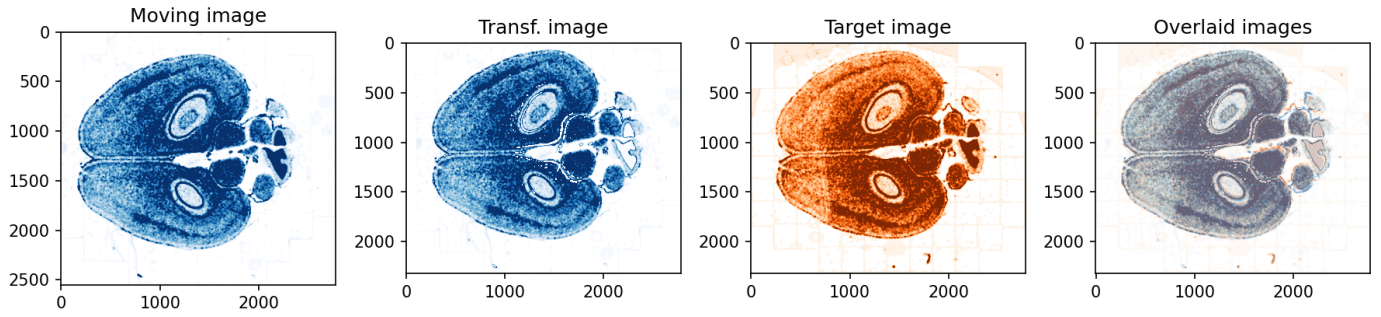


Figure 4.7: Results of registration of image 2020_04_25_NOK_0125-Scene-2 (Moving image) to 2020_04_25_GNI_0098-Scene-2 (Target image)

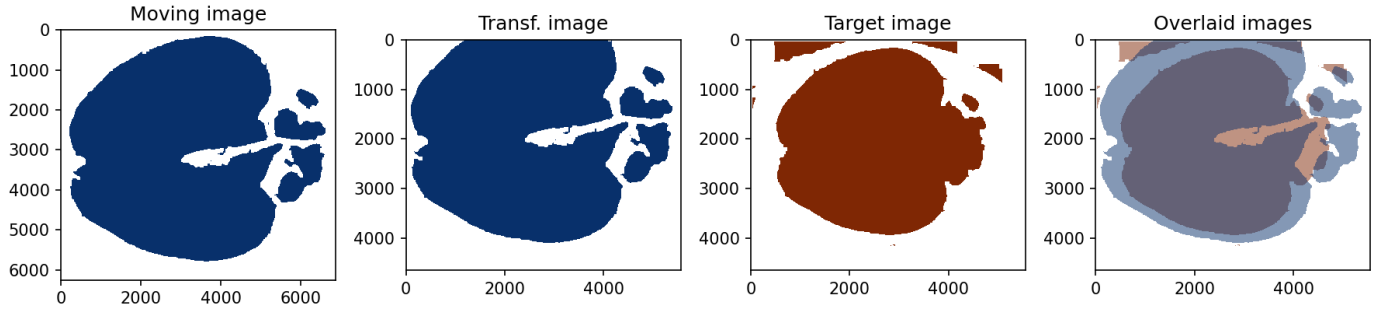


Figure 4.8: Results of registration of image P2A_B6_M10_HE_0002-Scene-2-ScanRegion1 (Moving image) to 2020_04_25_GNI_0098-Scene-2 (Target image)

4.1.5 0003_Scene_1

Raw images:

- 2020_04_25_GNI_0099-Scene-1.czi
- 2020_04_25_NOK_0126-Scene-1.czi
- P2A_B6_M10_HE_0003-Scene-1-ScanRegion0.czi

Registered stainings: 3/3

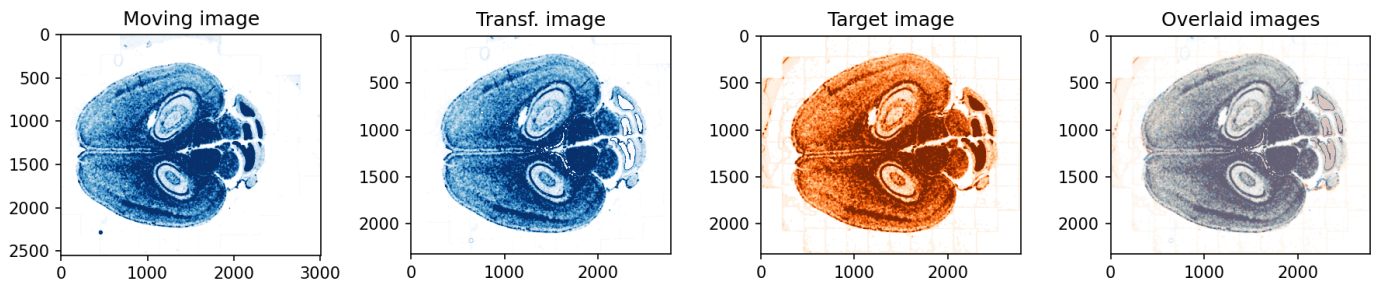


Figure 4.9: Results of registration of image 2020_04_25_NOK_0126-Scene-1 (Moving image) to 2020_04_25_GNI_0099-Scene-1 (Target image)

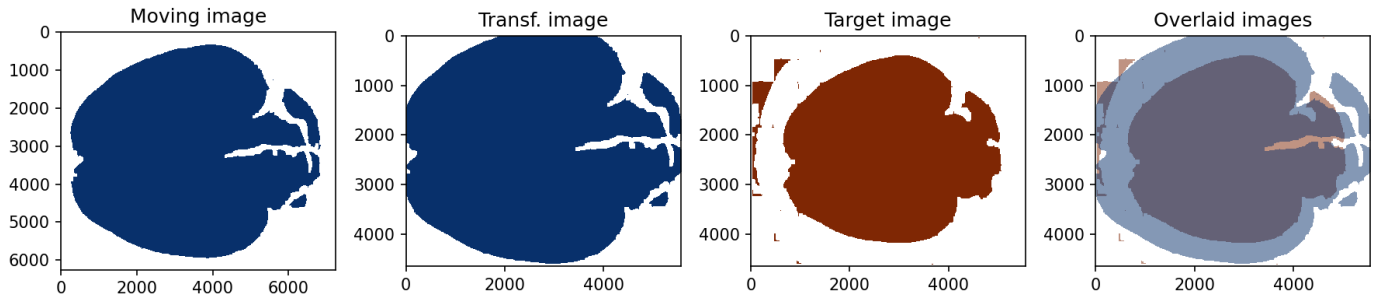


Figure 4.10: Results of registration of image P2A_B6_M10_HE_0003-Scene-1-ScanRegion0 (Moving image) to 2020_04_25_GNI_0099-Scene-1 (Target image)

4.1.6 0003_Scene_2

Raw images:

- 2020_04_25_GNI_0099-Scene-2.czi
- 2020_04_25_NOK_0126-Scene-2.czi
- P2A_B6_M10_HE_0003-Scene-2-ScanRegion1.czi

Registered stainings: 3/3

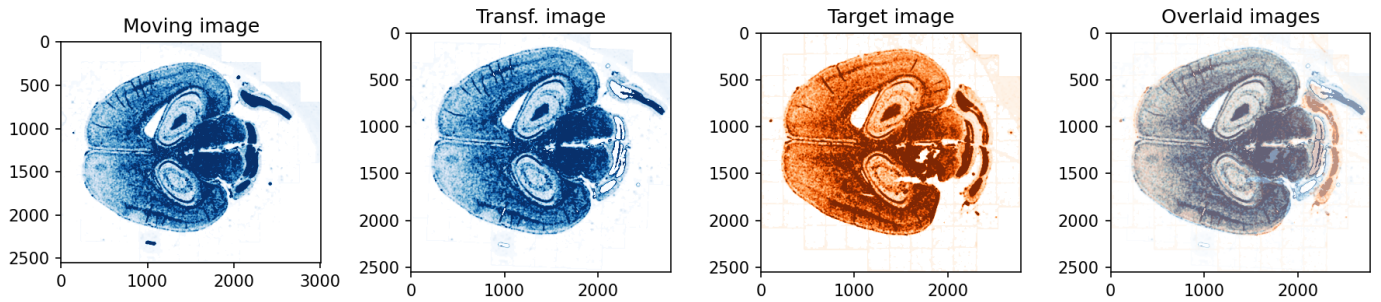


Figure 4.11: Results of registration of image 2020_04_25_NOK_0126-Scene-2 (Moving image) to 2020_04_25_GNI_0099-Scene-2 (Target image)

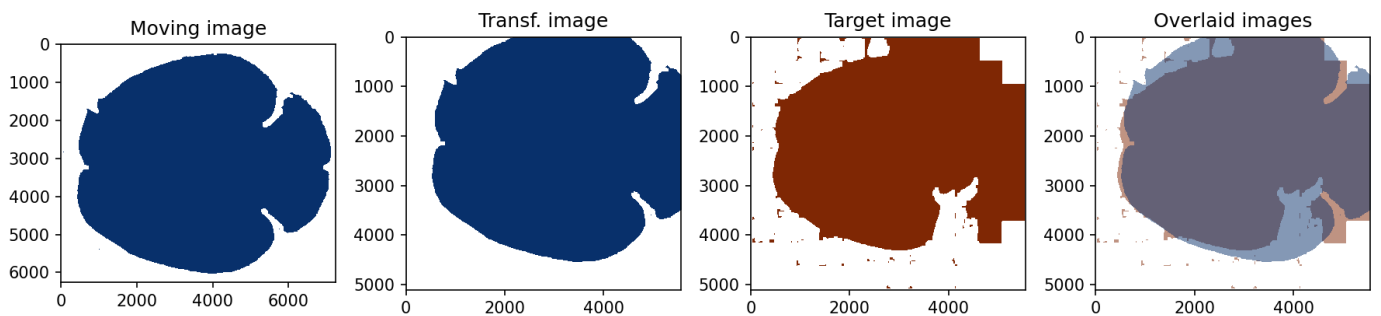


Figure 4.12: Results of registration of image P2A_B6_M10_HE_0003-Scene-2-ScanRegion1 (Moving image) to 2020_04_25_GNI_0099-Scene-2 (Target image)

4.1.7 0004_Scene_1

Raw images:

- 2020_04_25_GNI__0100-Scene-1.czi
- 2020_04_25_NOK__0127-Scene-1.czi
- P2A_B6_M10_HE_0004-Scene-1-ScanRegion0.czi

Registered stainings: 3/3

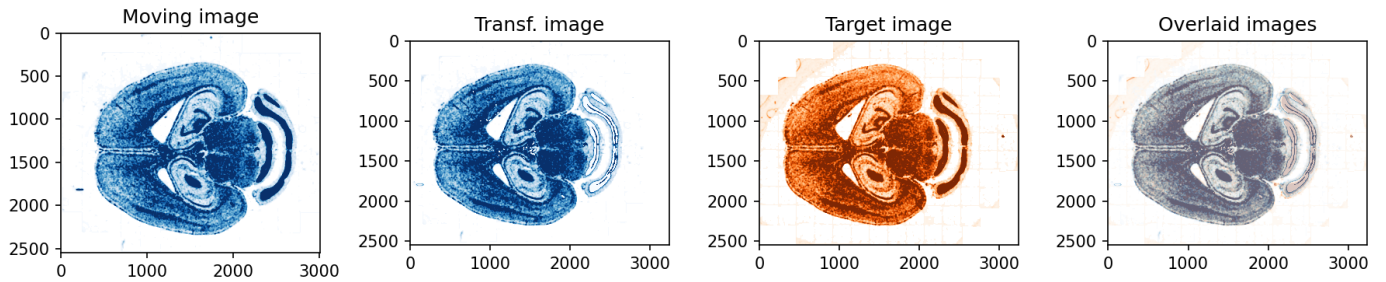


Figure 4.13: Results of registration of image 2020_04_25_NOK__0127-Scene-1 (Moving image) to 2020_04_25_GNI__0100-Scene-1 (Target image)

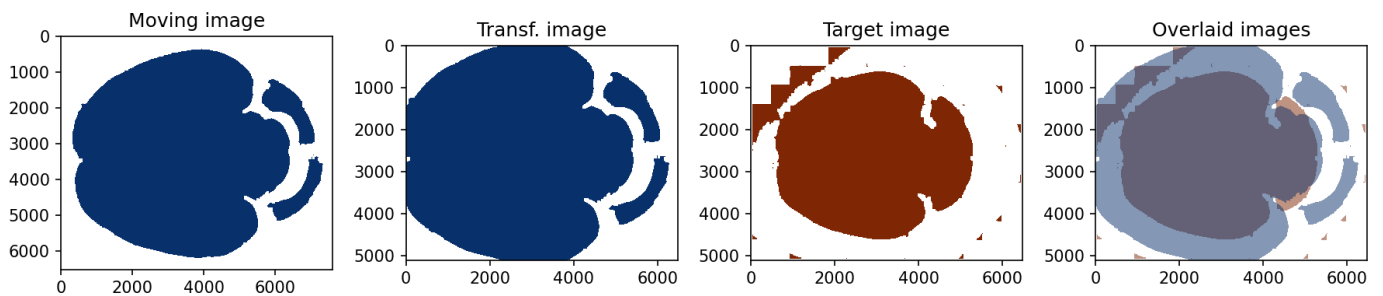


Figure 4.14: Results of registration of image P2A_B6_M10_HE_0004-Scene-1-ScanRegion0 (Moving image) to 2020_04_25_GNI__0100-Scene-1 (Target image)

4.1.8 0004_Scene_2

Raw images:

- 2020_04_25_GNI__0100-Scene-2.czi
- 2020_04_25_NOK__0127-Scene-2.czi
- P2A_B6_M10_HE_0004-Scene-2-ScanRegion1.czi

Registered stainings: 3/3

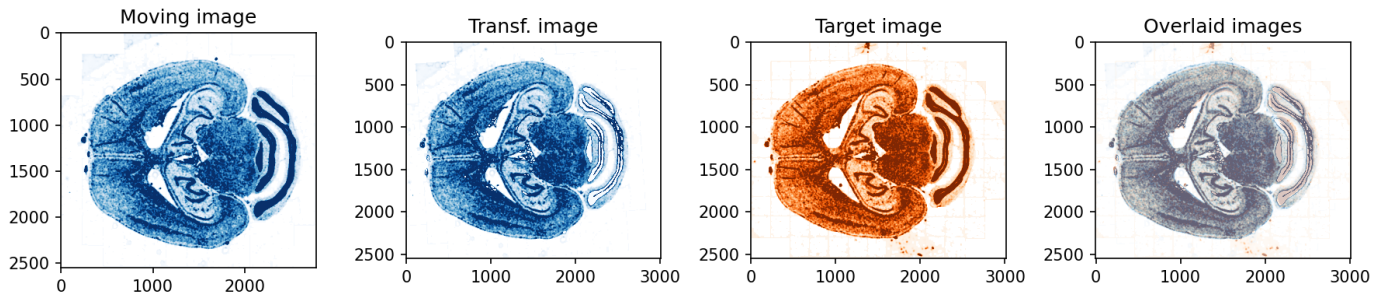


Figure 4.15: Results of registration of image 2020_04.25_NOK__0127-Scene-2 (Moving image) to 2020_04.25_GNI__0100-Scene-2 (Target image)

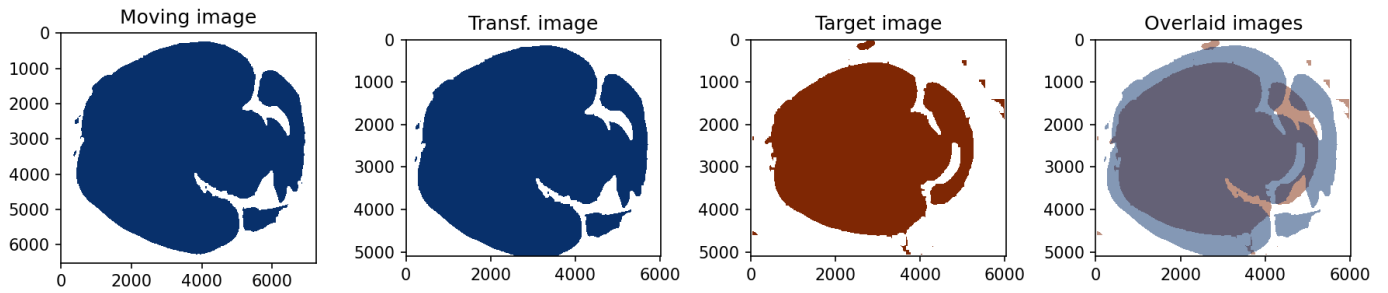


Figure 4.16: Results of registration of image P2A_B6_M10_HE_0004-Scene-2-ScanRegion1 (Moving image) to 2020_04.25_GNI__0100-Scene-2 (Target image)

4.1.9 0005_Scene_1

Raw images:

- 2020_04.25_GNI__0101-Scene-1.czi
- 2020_04.25_NOK__0128-Scene-1.czi
- P2A_B6_M10_HE_0005-Scene-1-ScanRegion0.czi

Registered stainings: 3/3

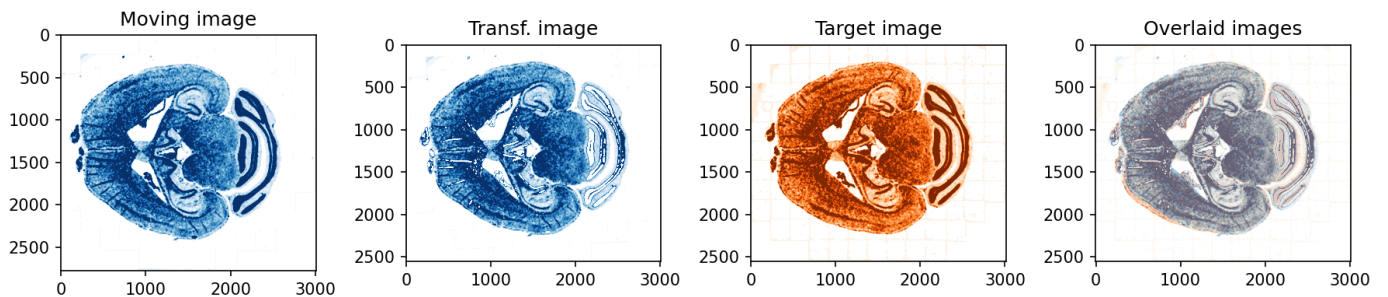


Figure 4.17: Results of registration of image 2020_04.25_NOK__0128-Scene-1 (Moving image) to 2020_04.25_GNI__0101-Scene-1 (Target image)

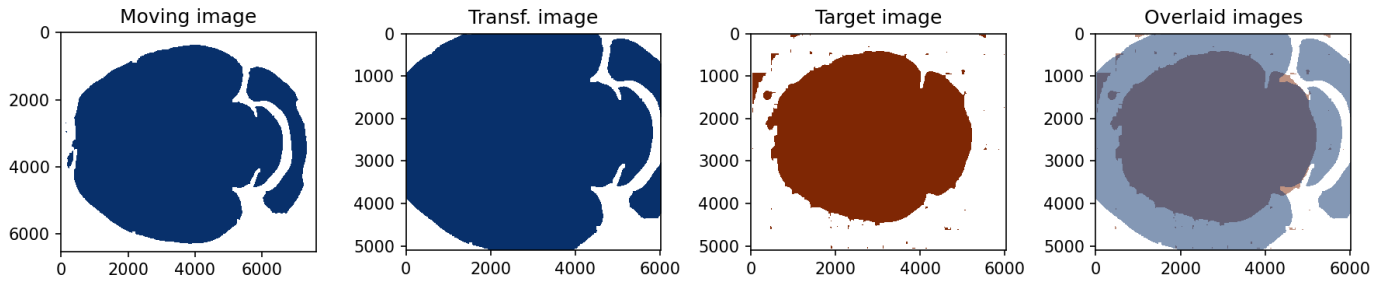


Figure 4.18: Results of registration of image P2A_B6_M10_HE_0005-Scene-1-ScanRegion0 (Moving image) to 2020_04_25_GNI_0101-Scene-1 (Target image)

4.1.10 0005_Scene_2

Raw images:

- 2020_04_25_GNI_0101-Scene-2.czi
- 2020_04_25_NOK_0128-Scene-2.czi
- P2A_B6_M10_HE_0005-Scene-2-ScanRegion1.czi

Registered stainings: 3/3

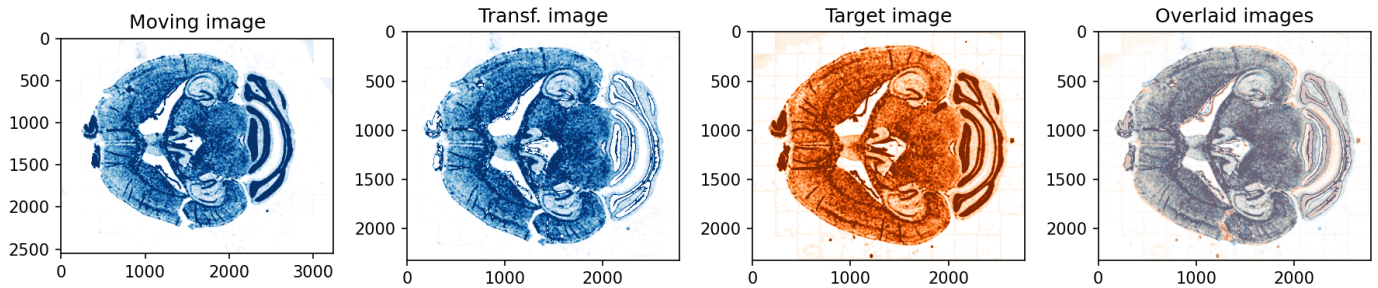


Figure 4.19: Results of registration of image 2020_04_25_NOK_0128-Scene-2 (Moving image) to 2020_04_25_GNI_0101-Scene-2 (Target image)

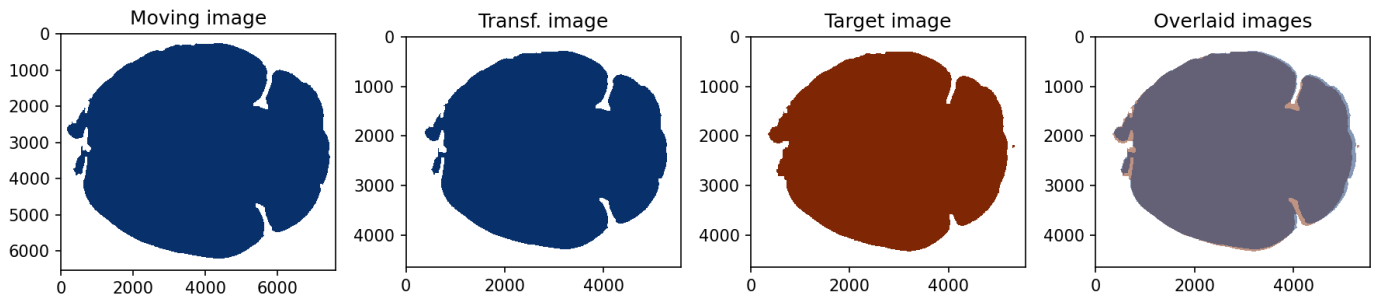


Figure 4.20: Results of registration of image P2A_B6_M10_HE_0005-Scene-2-ScanRegion1 (Moving image) to 2020_04_25_GNI_0101-Scene-2 (Target image)

4.1.11 0006_Scene_1

Raw images:

- 2020_04_25_GNI__0102-Scene-1.czi
- 2020_04_25_NOK__0129-Scene-1.czi
- P2A_B6_M10_HE_0006-Scene-1-ScanRegion0.czi

Registered stainings: 3/3

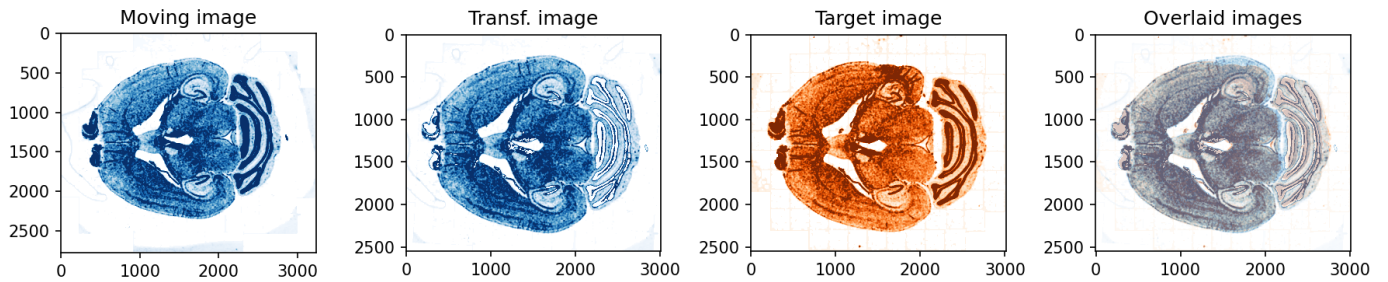


Figure 4.21: Results of registration of image 2020_04_25_NOK__0129-Scene-1 (Moving image) to 2020_04_25_GNI__0102-Scene-1 (Target image)

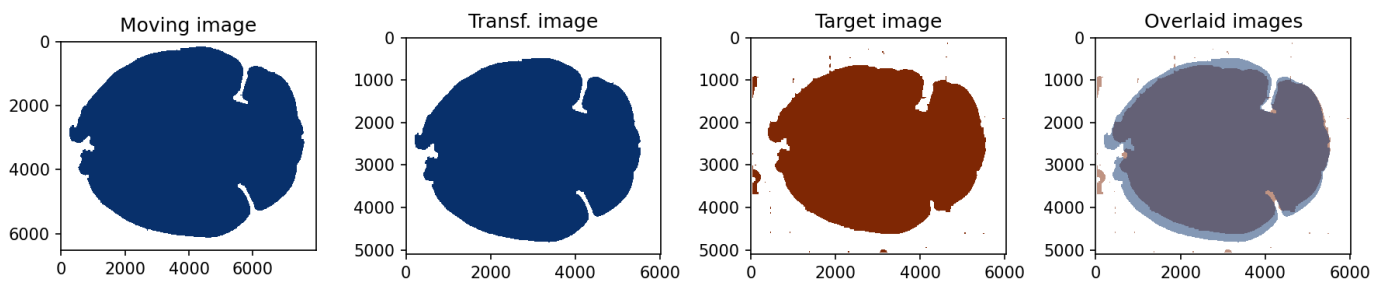


Figure 4.22: Results of registration of image P2A_B6_M10_HE_0006-Scene-1-ScanRegion0 (Moving image) to 2020_04_25_GNI__0102-Scene-1 (Target image)

4.1.12 0006_Scene_2

Raw images:

- 2020_04_25_GNI__0102-Scene-2.czi
- 2020_04_25_NOK__0129-Scene-2.czi
- P2A_B6_M10_HE_0006-Scene-2-ScanRegion1.czi

Registered stainings: 3/3

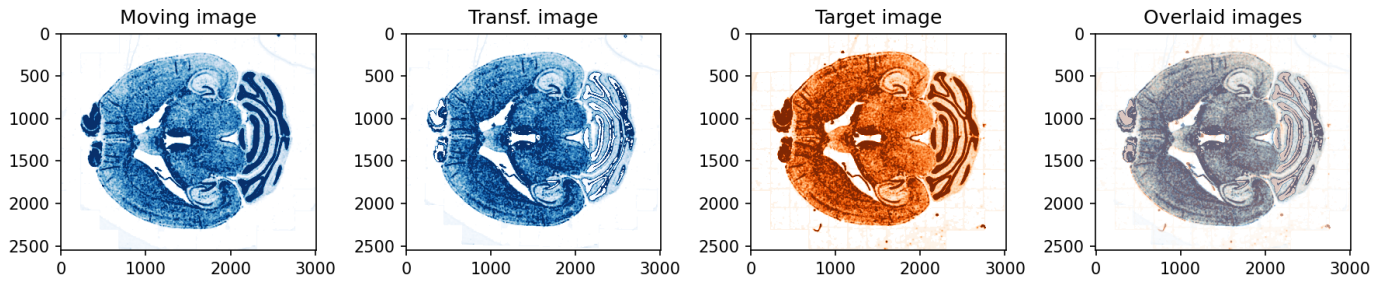


Figure 4.23: Results of registration of image 2020_04.25_NOK__0129-Scene-2 (Moving image) to 2020_04.25_GNI__0102-Scene-2 (Target image)

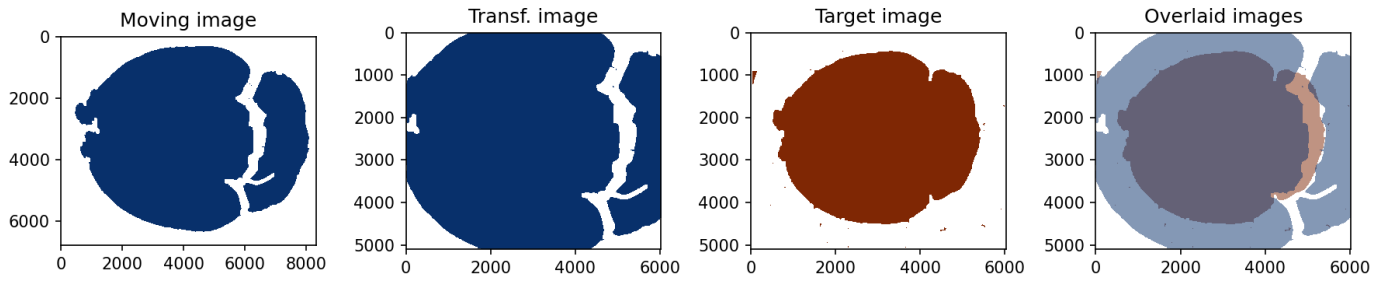


Figure 4.24: Results of registration of image P2A_B6_M10_HE_0006-Scene-2-ScanRegion1 (Moving image) to 2020_04.25_GNI__0102-Scene-2 (Target image)

4.1.13 0007_Scene_1

Raw images:

- 2020_04.25_GNI__0103-Scene-1.czi
- 2020_04.25_NOK__0130-Scene-1.czi
- P2A_B6_M10_HE_0007-Scene-1-ScanRegion0.czi

Registered stainings: 3/3

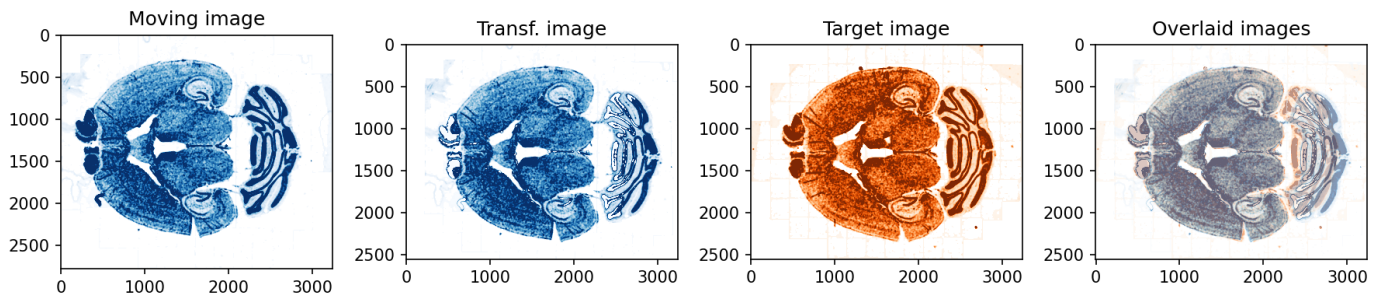


Figure 4.25: Results of registration of image 2020_04.25_NOK__0130-Scene-1 (Moving image) to 2020_04.25_GNI__0103-Scene-1 (Target image)

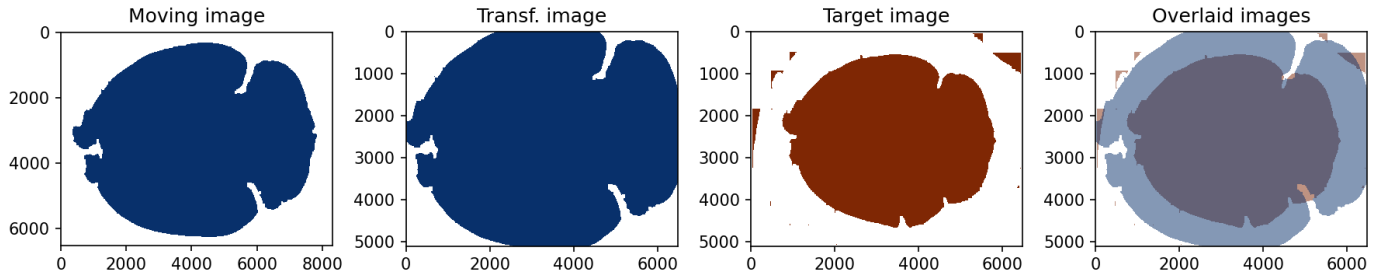


Figure 4.26: Results of registration of image P2A_B6_M10_HE_0007-Scene-1-ScanRegion0 (Moving image) to 2020_04_25_GNI_0103-Scene-1 (Target image)

4.1.14 0007_Scene_2

Raw images:

- 2020_04_25_GNI_0103-Scene-2.czi
- 2020_04_25_NOK_0130-Scene-2.czi
- P2A_B6_M10_HE_0007-Scene-2-ScanRegion1.czi

Registered stainings: 3/3

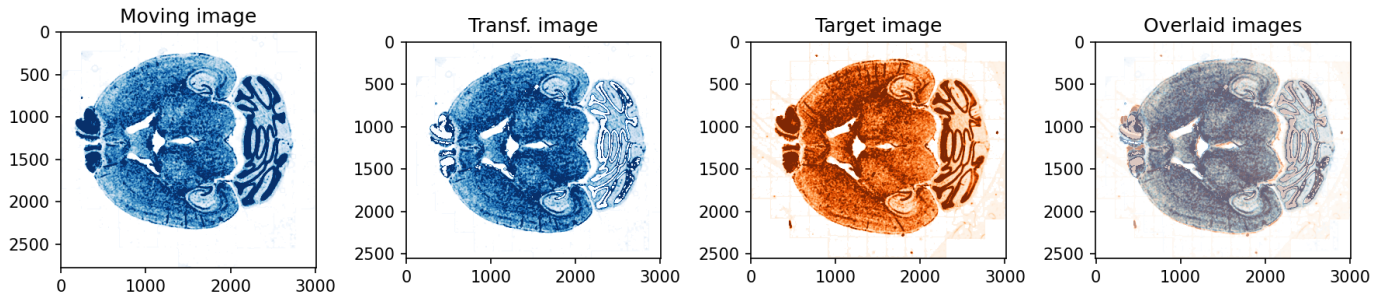


Figure 4.27: Results of registration of image 2020_04_25_NOK_0130-Scene-2 (Moving image) to 2020_04_25_GNI_0103-Scene-2 (Target image)

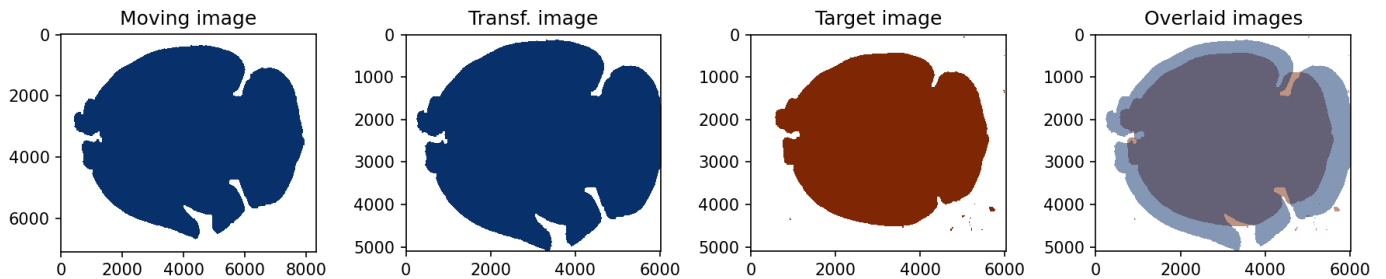


Figure 4.28: Results of registration of image P2A_B6_M10_HE_0007-Scene-2-ScanRegion1 (Moving image) to 2020_04_25_GNI_0103-Scene-2 (Target image)

4.1.15 0008_Scene_1

Raw images:

- 2020_04_25_GNI__0104-Scene-1.czi
- 2020_04_25_NOK__0131-Scene-1.czi
- P2A_B6_M10_HE_0008-Scene-1-ScanRegion0.czi

Registered stainings: 3/3

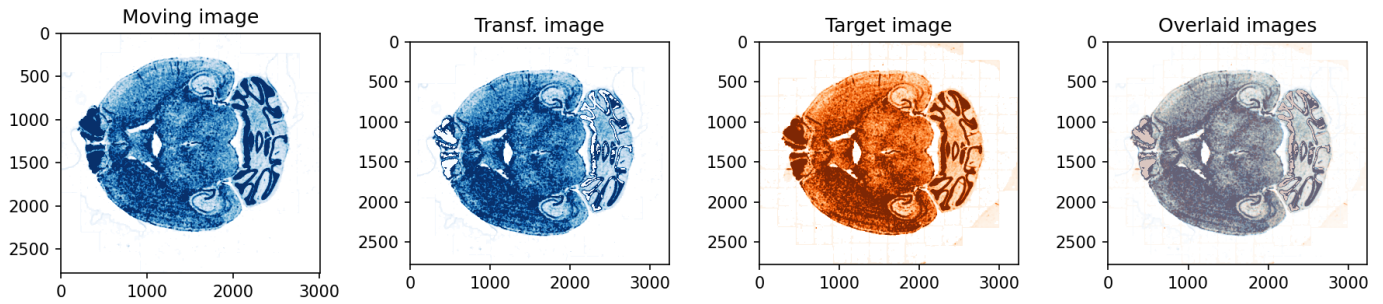


Figure 4.29: Results of registration of image 2020_04_25_NOK__0131-Scene-1 (Moving image) to 2020_04_25_GNI__0104-Scene-1 (Target image)

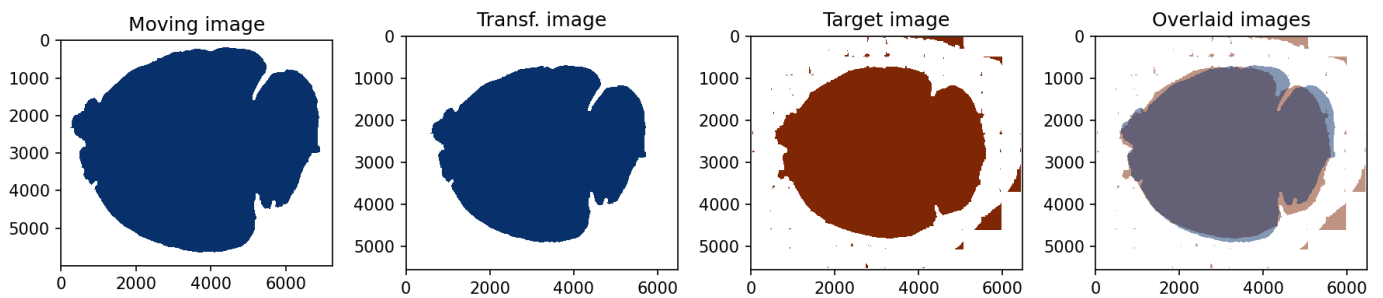


Figure 4.30: Results of registration of image P2A_B6_M10_HE_0008-Scene-1-ScanRegion0 (Moving image) to 2020_04_25_GNI__0104-Scene-1 (Target image)

4.1.16 0008_Scene_2

Raw images:

- 2020_04_25_GNI__0104-Scene-2.czi
- 2020_04_25_NOK__0131-Scene-2.czi
- P2A_B6_M10_HE_0008-Scene-2-ScanRegion1.czi

Registered stainings: 3/3

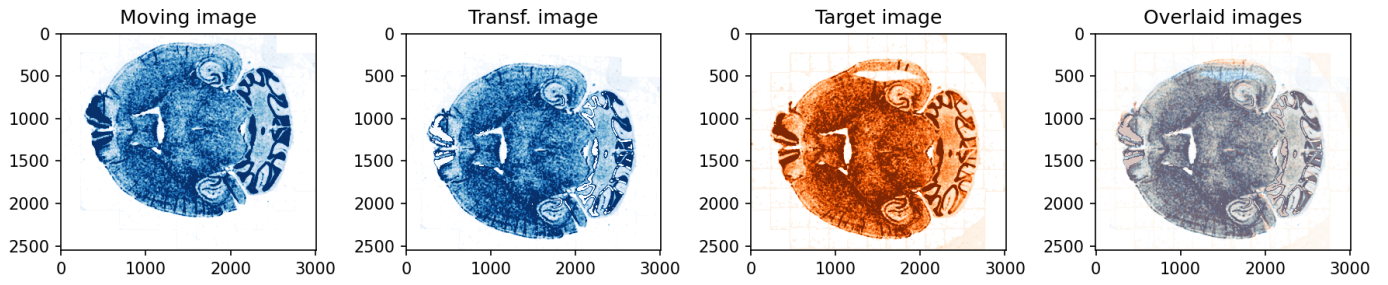


Figure 4.31: Results of registration of image 2020_04.25_NOK__0131-Scene-2 (Moving image) to 2020_04.25_GNI__0104-Scene-2 (Target image)

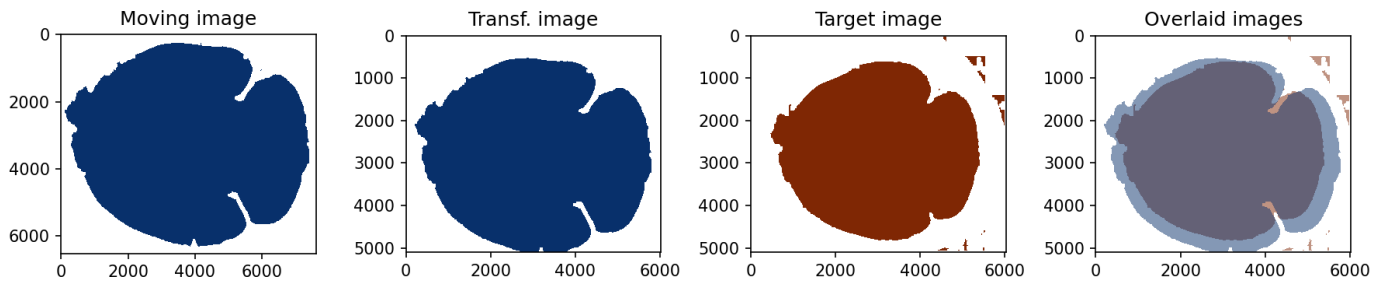


Figure 4.32: Results of registration of image P2A_B6_M10_HE_0008-Scene-2-ScanRegion1 (Moving image) to 2020_04.25_GNI__0104-Scene-2 (Target image)

4.1.17 0009_Scene_1

Raw images:

- 2020_04.25_GNI__0105-Scene-1.czi
- 2020_04.25_NOK__0132-Scene-1.czi
- P2A_B6_M10_HE_0009-Scene-1-ScanRegion0.czi

Registered stainings: 3/3

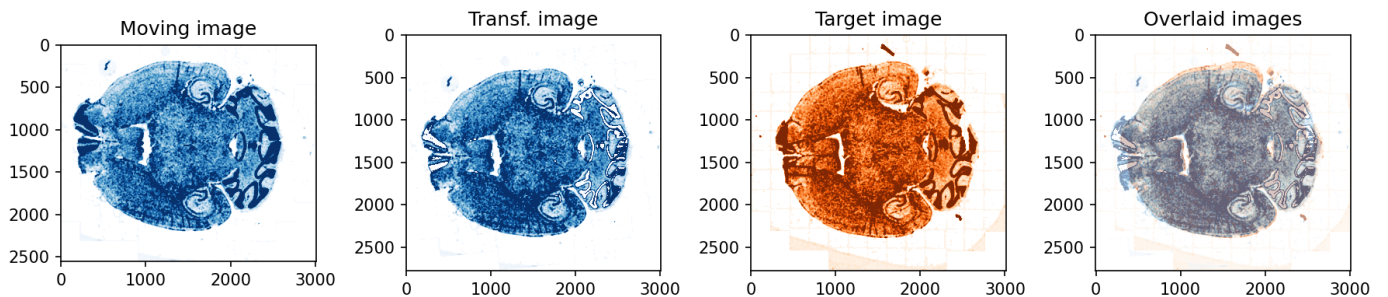


Figure 4.33: Results of registration of image 2020_04.25_NOK__0132-Scene-1 (Moving image) to 2020_04.25_GNI__0105-Scene-1 (Target image)

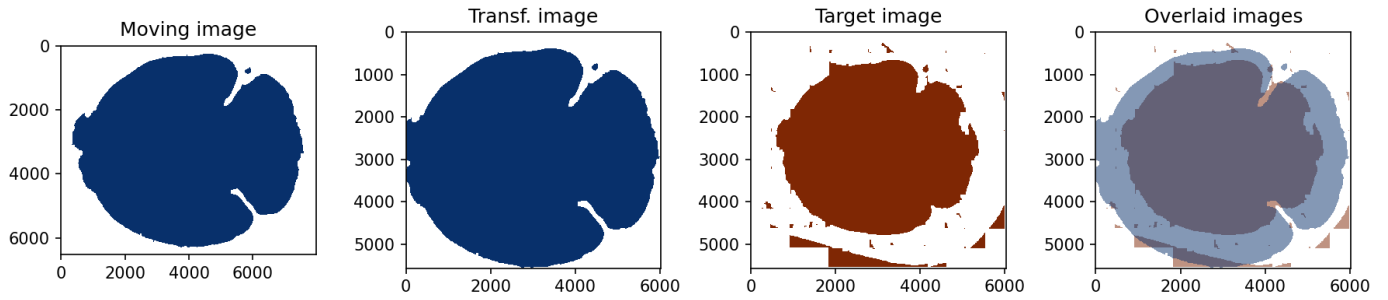


Figure 4.34: Results of registration of image P2A_B6_M10_HE_0009-Scene-1-ScanRegion0 (Moving image) to 2020_04_25_GNI_0105-Scene-1 (Target image)

4.1.18 0009_Scene_2

Raw images:

- 2020_04_25_GNI_0105-Scene-2.czi
- 2020_04_25_NOK_0132-Scene-2.czi
- P2A_B6_M10_HE_0009-Scene-2-ScanRegion1.czi

Registered stainings: 3/3

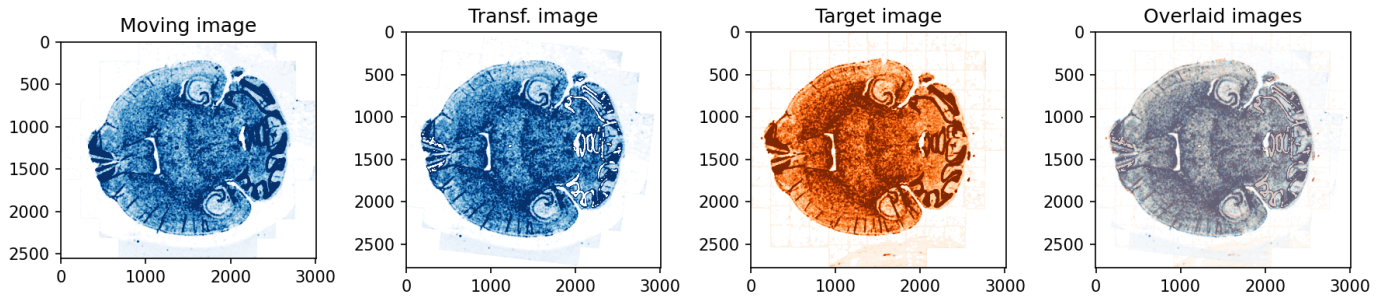


Figure 4.35: Results of registration of image 2020_04_25_NOK_0132-Scene-2 (Moving image) to 2020_04_25_GNI_0105-Scene-2 (Target image)

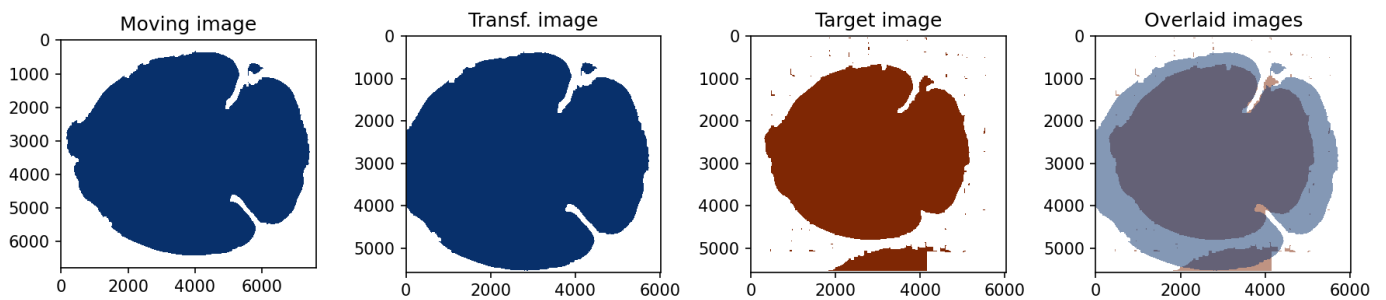


Figure 4.36: Results of registration of image P2A_B6_M10_HE_0009-Scene-2-ScanRegion1 (Moving image) to 2020_04_25_GNI_0105-Scene-2 (Target image)

4.1.19 0010_Scene_1

Raw images:

- 2020_04_25_GNI__0106-Scene-1.czi
- 2020_04_25_NOK__0133-Scene-1.czi
- P2A_B6_M10_HE_0010-Scene-1-ScanRegion0.czi

Registered stainings: 3/3

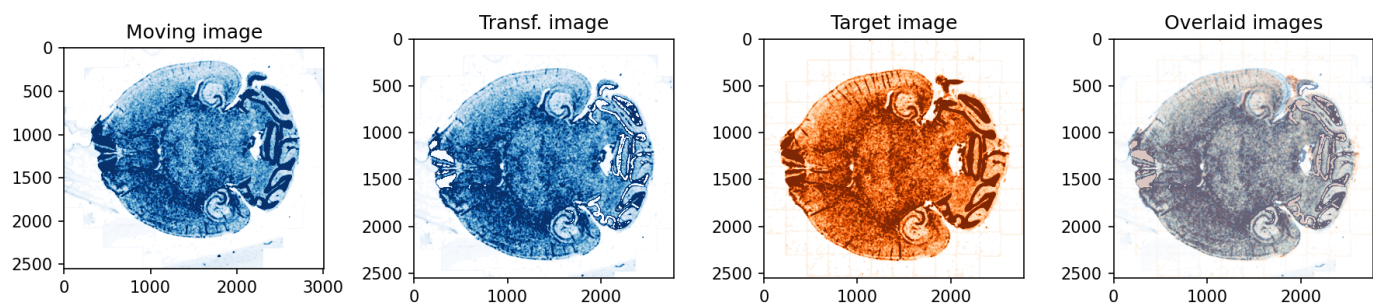


Figure 4.37: Results of registration of image 2020_04_25_NOK__0133-Scene-1 (Moving image) to 2020_04_25_GNI__0106-Scene-1 (Target image)

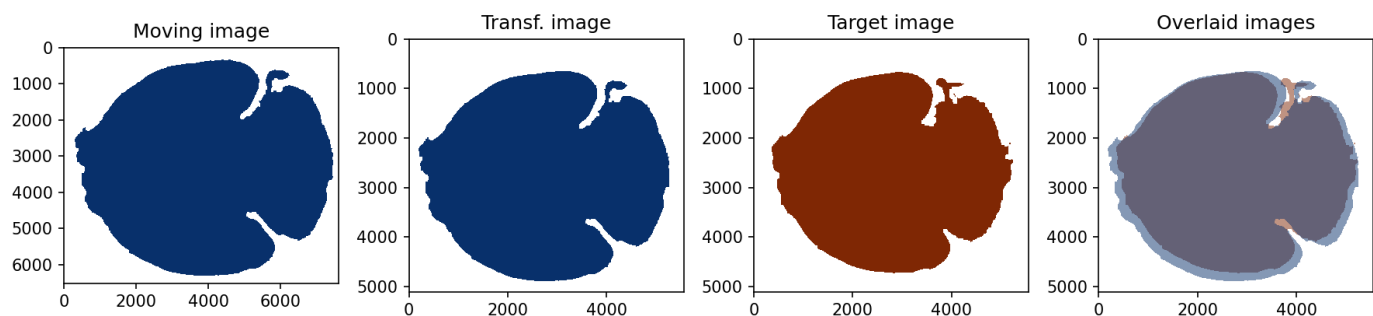


Figure 4.38: Results of registration of image P2A_B6_M10_HE_0010-Scene-1-ScanRegion0 (Moving image) to 2020_04_25_GNI__0106-Scene-1 (Target image)

4.1.20 0010_Scene_2

Raw images:

- 2020_04_25_GNI__0106-Scene-2.czi
- 2020_04_25_NOK__0133-Scene-2.czi
- P2A_B6_M10_HE_0010-Scene-2-ScanRegion1.czi

Registered stainings: 3/3

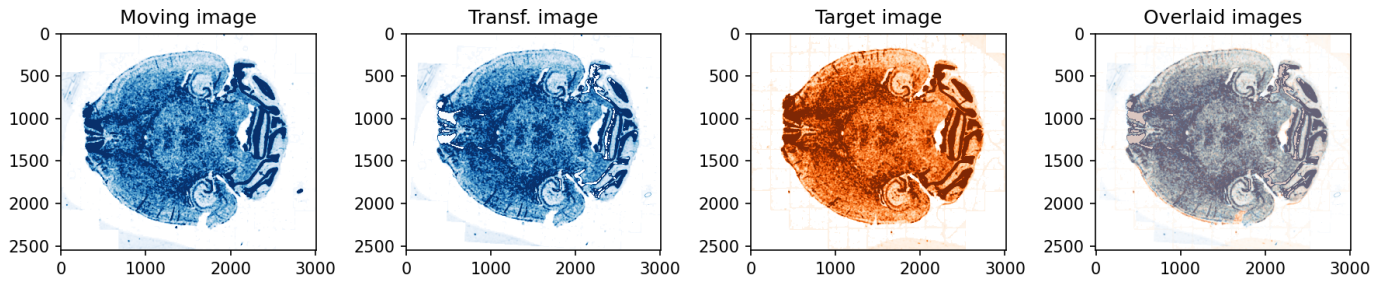


Figure 4.39: Results of registration of image 2020_04.25_NOK__0133-Scene-2 (Moving image) to 2020_04.25_GNI__0106-Scene-2 (Target image)

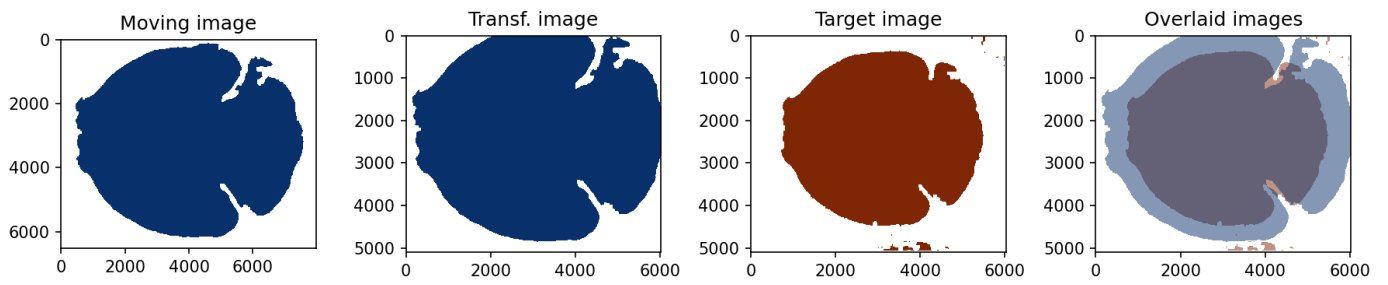


Figure 4.40: Results of registration of image P2A_B6_M10_HE_0010-Scene-2-ScanRegion1 (Moving image) to 2020_04.25_GNI__0106-Scene-2 (Target image)

4.1.21 0011_Scene_1

Raw images:

- 2020_04.25_GNI__0107-Scene-1.czi
- 2020_04.25_NOK__0134-Scene-1.czi
- P2A_B6_M10_HE_0011-Scene-1-ScanRegion0.czi

Registered stainings: 3/3

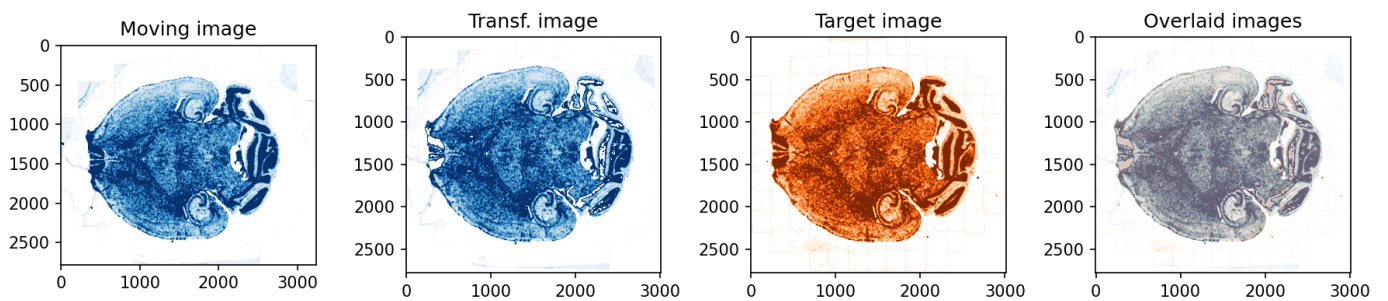


Figure 4.41: Results of registration of image 2020_04.25_NOK__0134-Scene-1 (Moving image) to 2020_04.25_GNI__0107-Scene-1 (Target image)

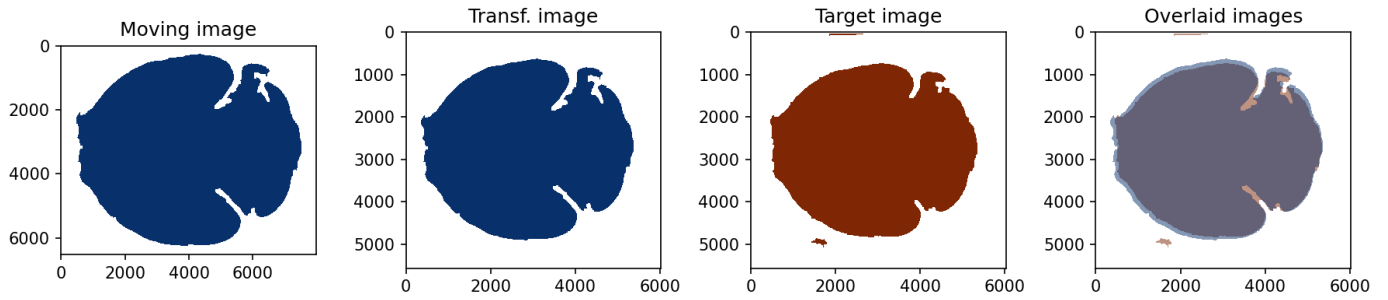


Figure 4.42: Results of registration of image P2A_B6_M10_HE_0011-Scene-1-ScanRegion0 (Moving image) to 2020_04_25_GNI_0107-Scene-1 (Target image)

4.1.22 0011_Scene_2

Raw images:

- 2020_04_25_GNI_0107-Scene-2.czi
- 2020_04_25_NOK_0134-Scene-2.czi
- P2A_B6_M10_HE_0011-Scene-2-ScanRegion1.czi

Registered stainings: 3/3

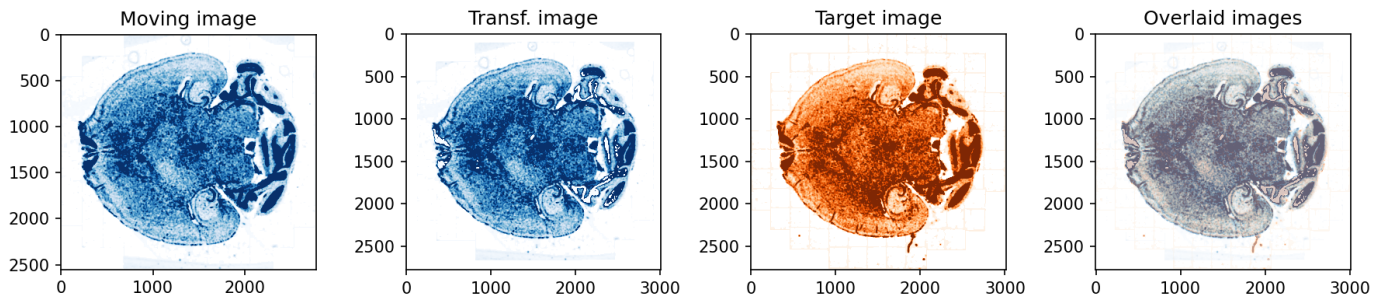


Figure 4.43: Results of registration of image 2020_04_25_NOK_0134-Scene-2 (Moving image) to 2020_04_25_GNI_0107-Scene-2 (Target image)

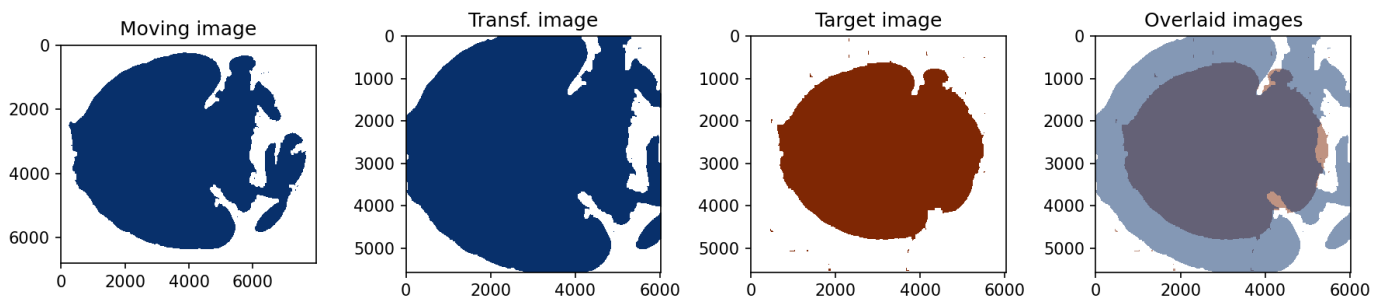


Figure 4.44: Results of registration of image P2A_B6_M10_HE_0011-Scene-2-ScanRegion1 (Moving image) to 2020_04_25_GNI_0107-Scene-2 (Target image)

4.1.23 0012_Scene_1

Raw images:

- 2020_04_25_GNI__0108-Scene-1.czi
- 2020_04_25_NOK__0135-Scene-1.czi
- P2A_B6_M10_HE_0012-Scene-1-ScanRegion0.czi

Registered stainings: 3/3

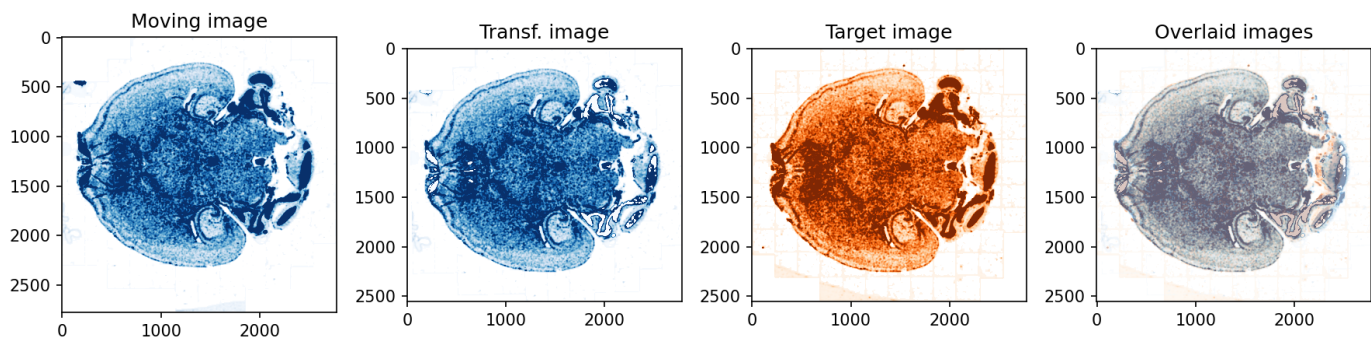


Figure 4.45: Results of registration of image 2020_04_25_NOK__0135-Scene-1 (Moving image) to 2020_04_25_GNI__0108-Scene-1 (Target image)

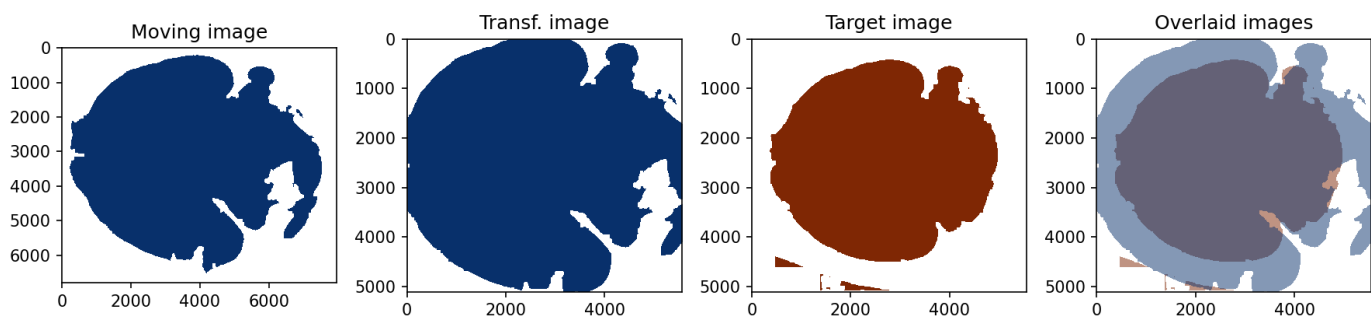


Figure 4.46: Results of registration of image P2A_B6_M10_HE_0012-Scene-1-ScanRegion0 (Moving image) to 2020_04_25_GNI__0108-Scene-1 (Target image)

4.1.24 0012_Scene_2

Raw images:

- 2020_04_25_GNI__0108-Scene-2.czi
- 2020_04_25_NOK__0135-Scene-2.czi
- P2A_B6_M10_HE_0012-Scene-2-ScanRegion1.czi

Registered stainings: 3/3

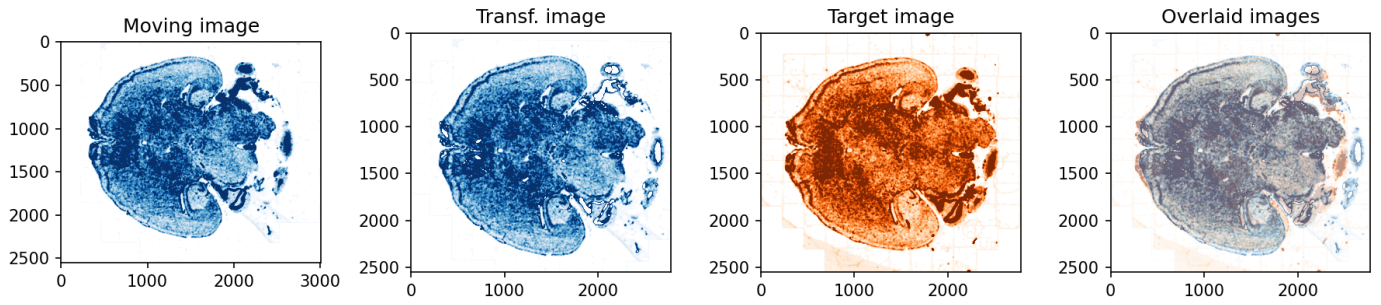


Figure 4.47: Results of registration of image 2020_04.25_NOK__0135-Scene-2 (Moving image) to 2020_04.25_GNI__0108-Scene-2 (Target image)

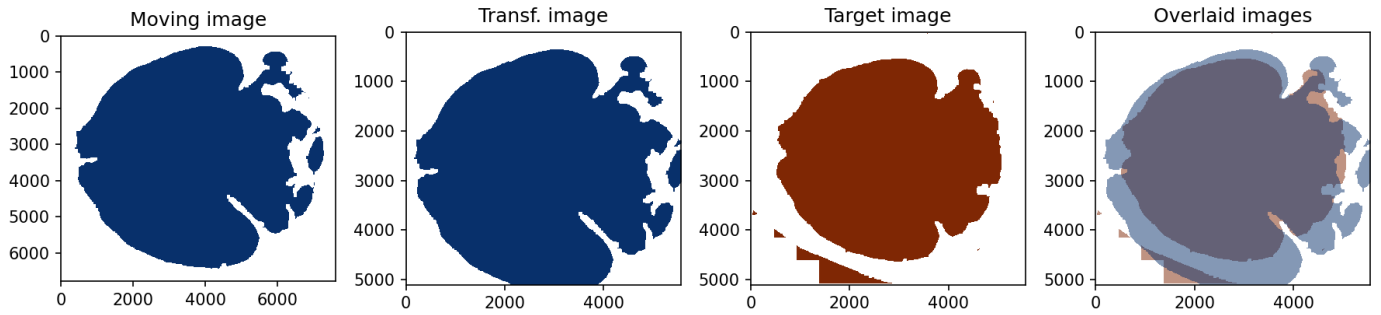


Figure 4.48: Results of registration of image P2A_B6_M10_HE_0012-Scene-2-ScanRegion1 (Moving image) to 2020_04.25_GNI__0108-Scene-2 (Target image)

4.1.25 0013_Scene_1

Raw images:

- 2020_04.25_GNI__0109-Scene-1.czi
- 2020_04.25_NOK__0136-Scene-1.czi
- P2A_B6_M10_HE_0013-Scene-1-ScanRegion0.czi

Registered stainings: 3/3

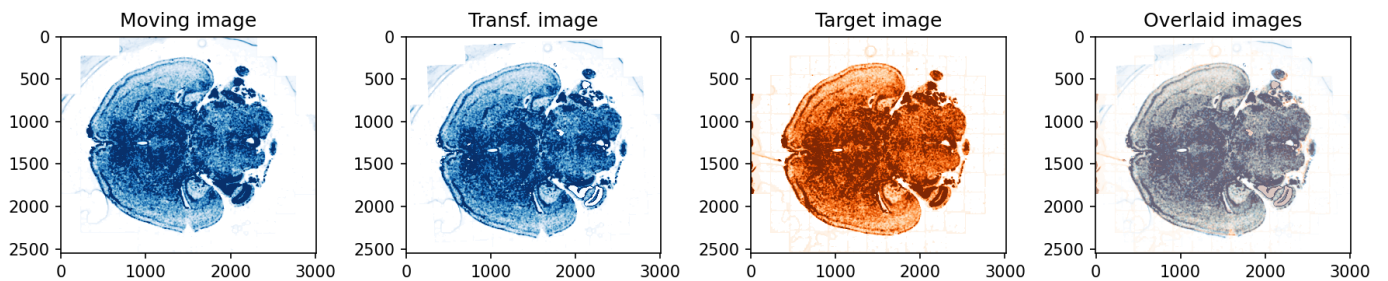


Figure 4.49: Results of registration of image 2020_04.25_NOK__0136-Scene-1 (Moving image) to 2020_04.25_GNI__0109-Scene-1 (Target image)

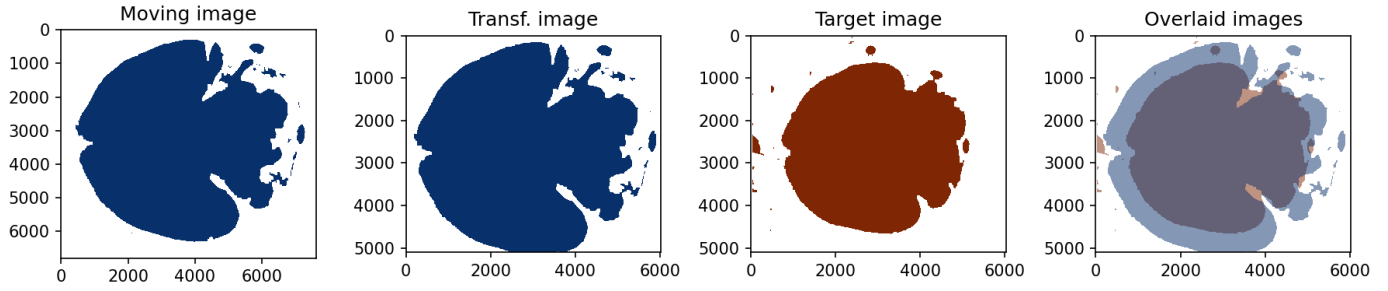


Figure 4.50: Results of registration of image P2A_B6_M10_HE_0013-Scene-1-ScanRegion0 (Moving image) to 2020_04_25_GNI_0109-Scene-1 (Target image)

4.1.26 0013_Scene_2

Raw images:

- 2020_04_25_GNI_0109-Scene-2.czi
- 2020_04_25_NOK_0136-Scene-2.czi
- P2A_B6_M10_HE_0013-Scene-2-ScanRegion1.czi

Registered stainings: 3/3

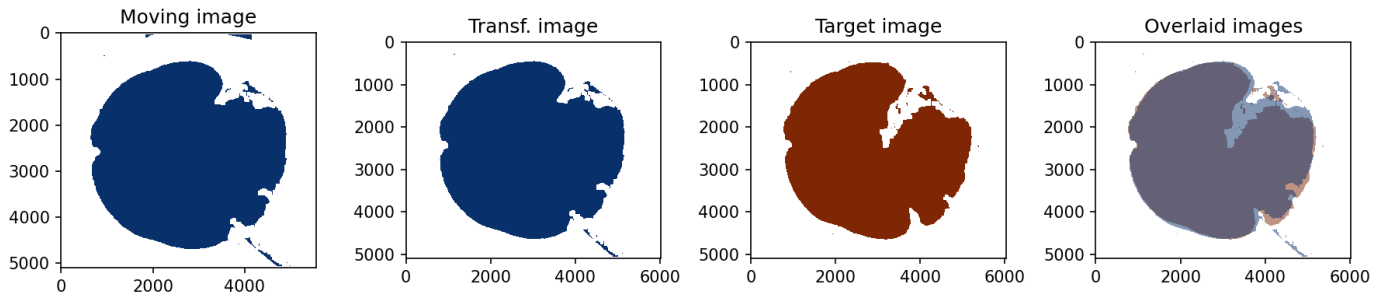


Figure 4.51: Results of registration of image 2020_04_25_NOK_0136-Scene-2 (Moving image) to 2020_04_25_GNI_0109-Scene-2 (Target image)

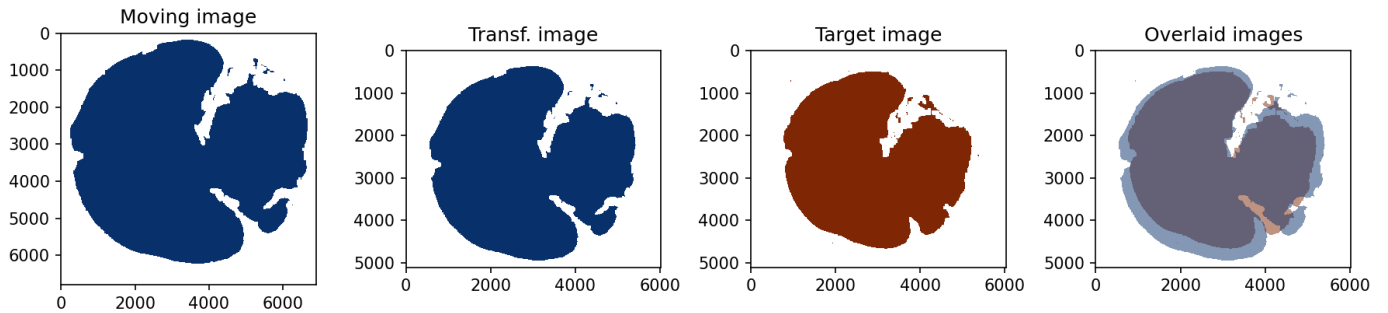


Figure 4.52: Results of registration of image P2A_B6_M10_HE_0013-Scene-2-ScanRegion1 (Moving image) to 2020_04_25_GNI_0109-Scene-2 (Target image)

4.1.27 0014_Scene_1

Raw images:

- 2020_04_25_GNI__0110-Scene-1.czi
- 2020_04_25_NOK__0137-Scene-1.czi
- P2A_B6_M10_HE_0014-Scene-1-ScanRegion0.czi

Registered stainings: 3/3

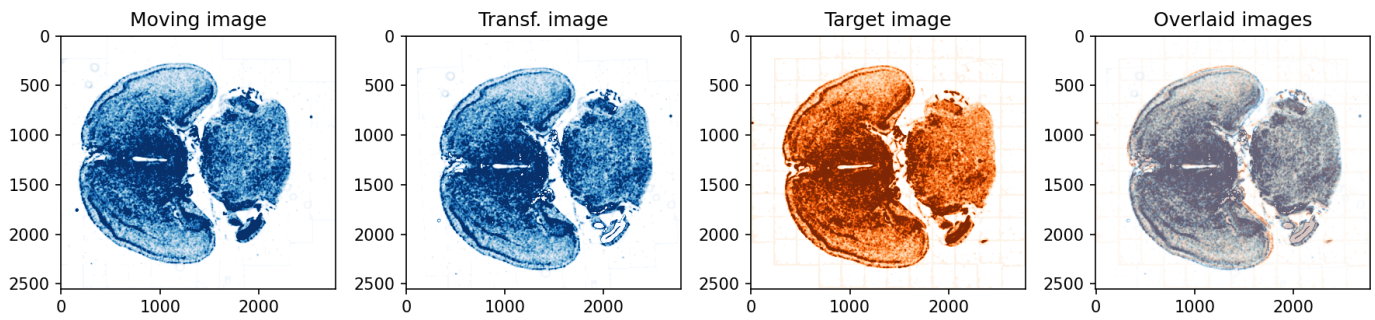


Figure 4.53: Results of registration of image 2020_04_25_NOK__0137-Scene-1 (Moving image) to 2020_04_25_GNI__0110-Scene-1 (Target image)

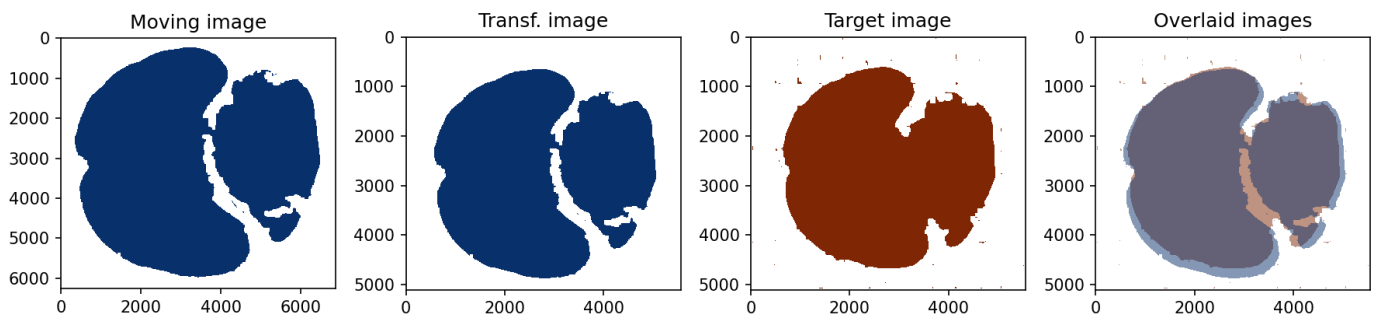


Figure 4.54: Results of registration of image P2A_B6_M10_HE_0014-Scene-1-ScanRegion0 (Moving image) to 2020_04_25_GNI__0110-Scene-1 (Target image)

4.1.28 0014_Scene_2

Raw images:

- 2020_04_25_GNI__0110-Scene-2.czi
- 2020_04_25_NOK__0137-Scene-2.czi
- P2A_B6_M10_HE_0014-Scene-2-ScanRegion1.czi

Registered stainings: 3/3

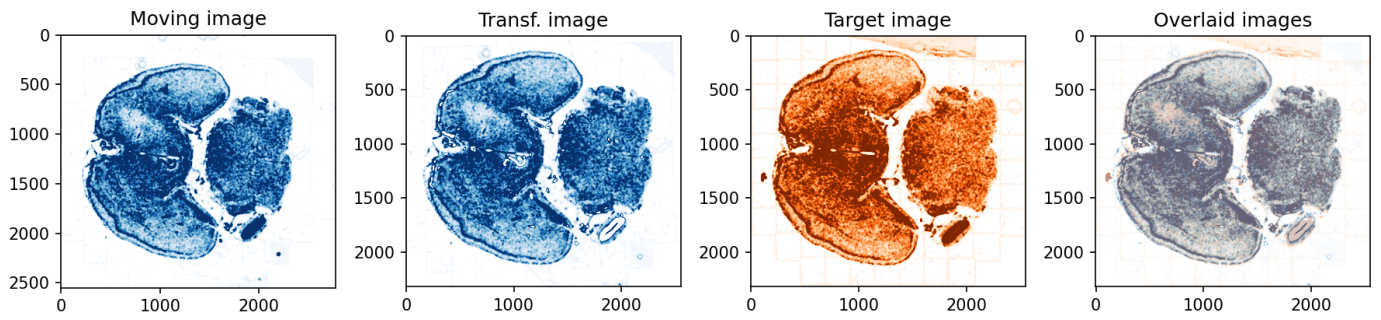


Figure 4.55: Results of registration of image 2020_04.25_NOK__0137-Scene-2 (Moving image) to 2020_04.25_GNI__0110-Scene-2 (Target image)

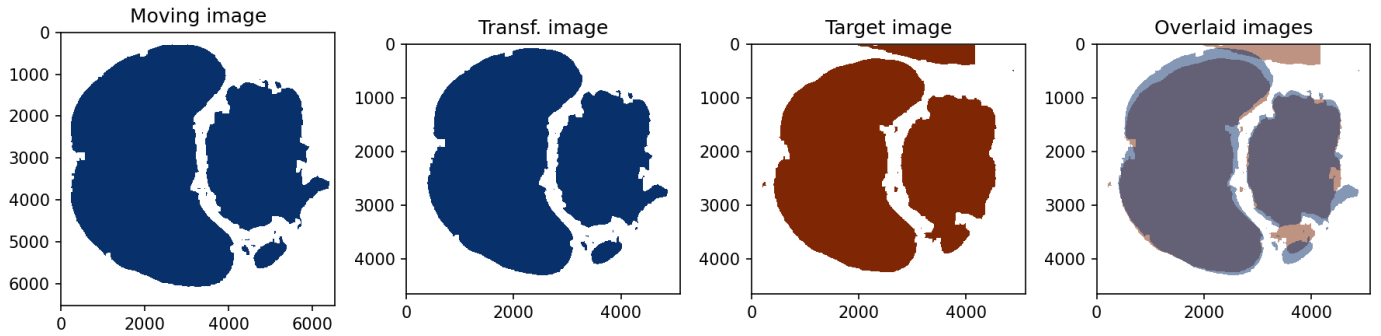


Figure 4.56: Results of registration of image P2A_B6_M10_HE_0014-Scene-2-ScanRegion1 (Moving image) to 2020_04.25_GNI__0110-Scene-2 (Target image)

4.2 Slice2Volume

Forward transformation files: 28/28

Inverse transformation files: 28/28

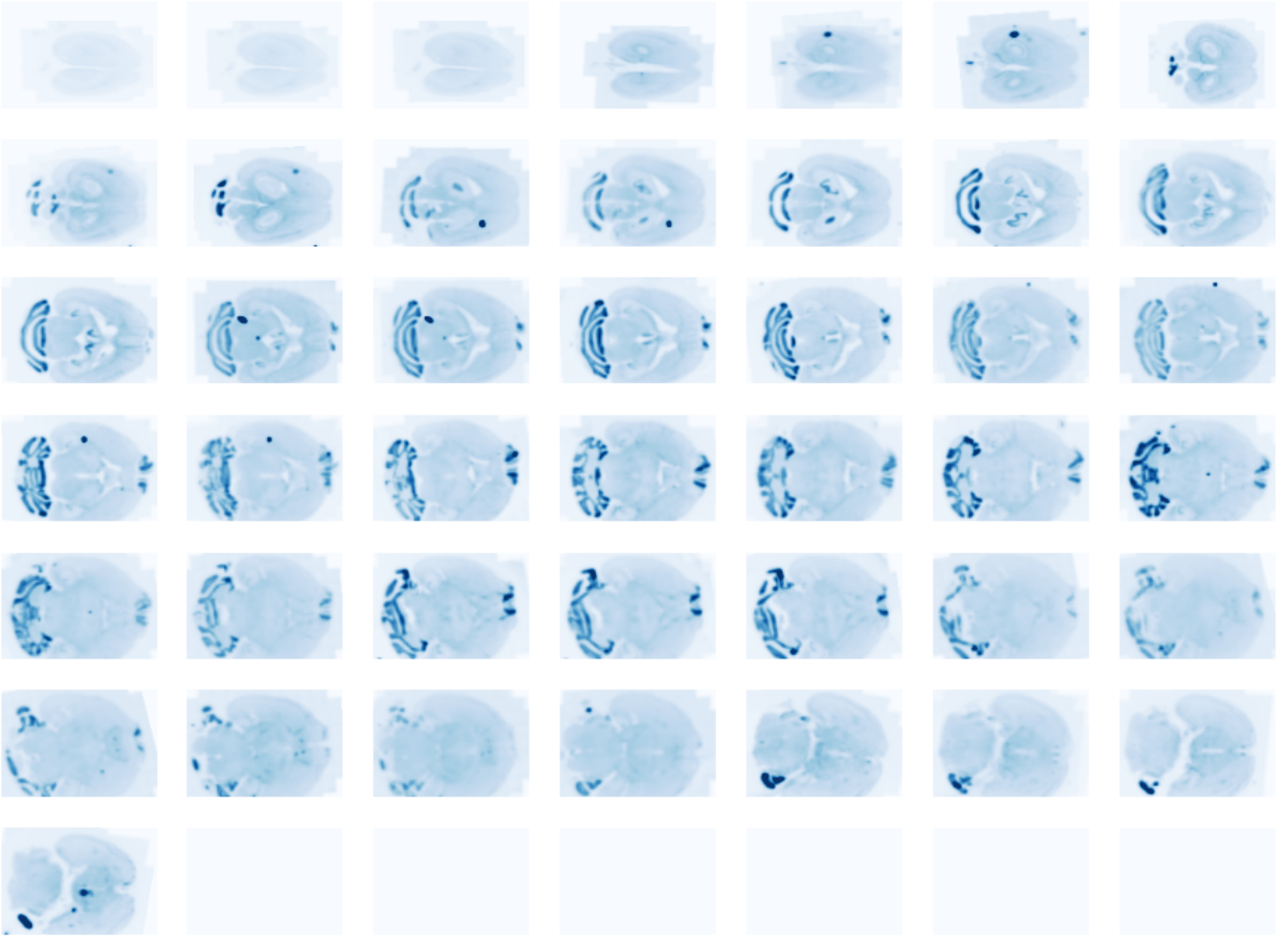


Figure 4.57: Sequence of coronal DAPI images that were transformed with Slice2Volume. This view allows to evaluate the consistency of subsequent slices.

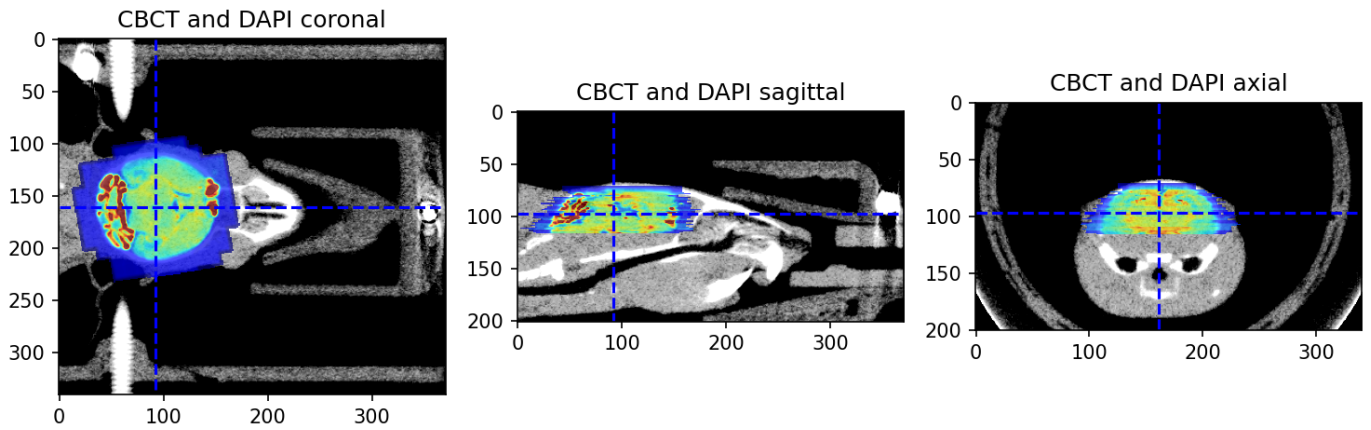


Figure 4.58: Overlay of downsampled and transformed histological image (DAPI_r) and CBCT