

CP-AFM

Cantilever:

AIO-Al-TL-C

force constant calibrated by thermal noise methode, $k = 1.688 \pm 0.052$ N/m

dimensions L/W/t = 210/30/2.7 μm

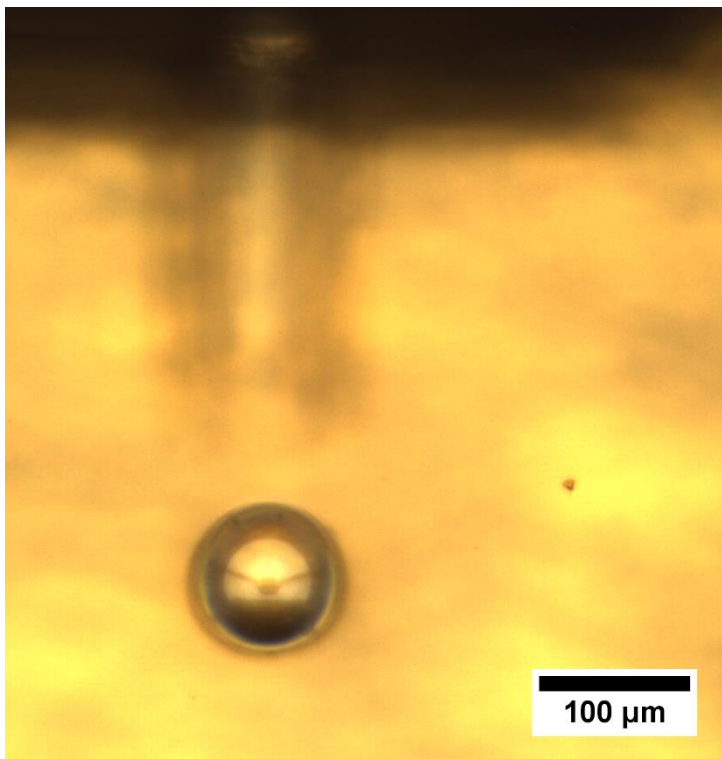
resonance frequency 79.8 kHz (before particle attachement), 6.7 kHz (after particle attachment)

Colloid:

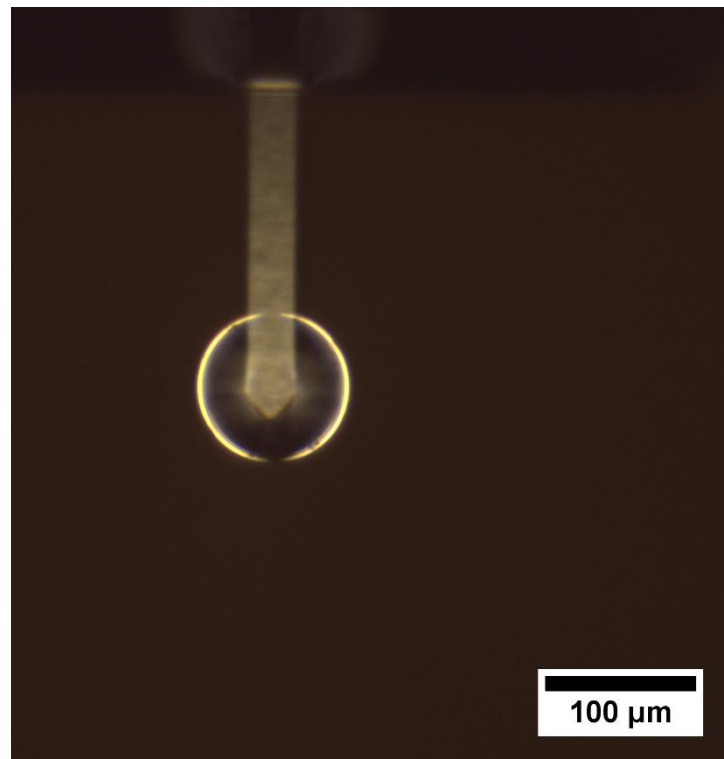
100 μm glass particle (soda lime glass GBL 100) provided by Gregory Lecrivain

Glue:

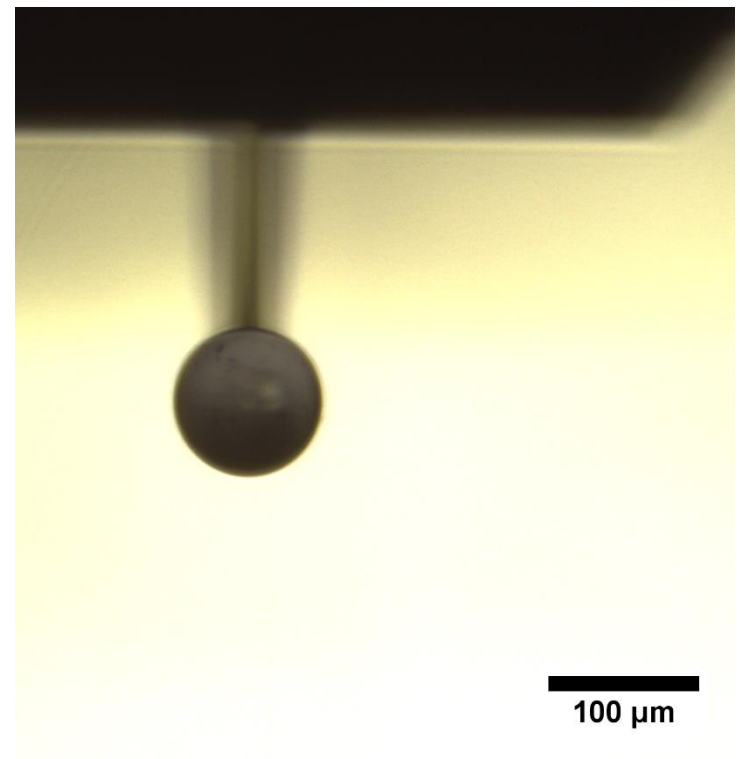
UV curable glue



Glass particle before attachment

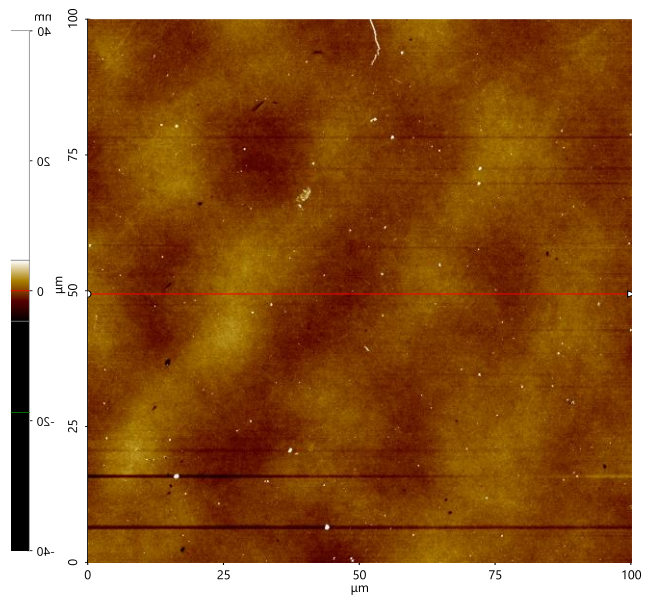
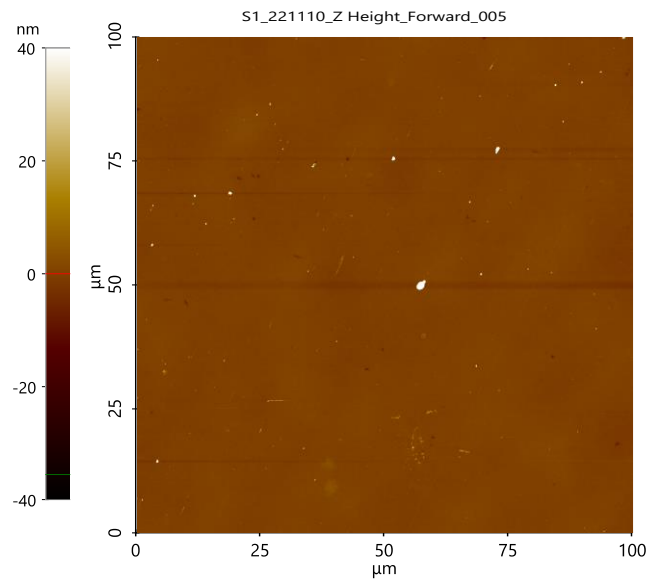


Glass particle attached to cantilever
view from top



Glass particle attached to cantilever
reflection view

S1

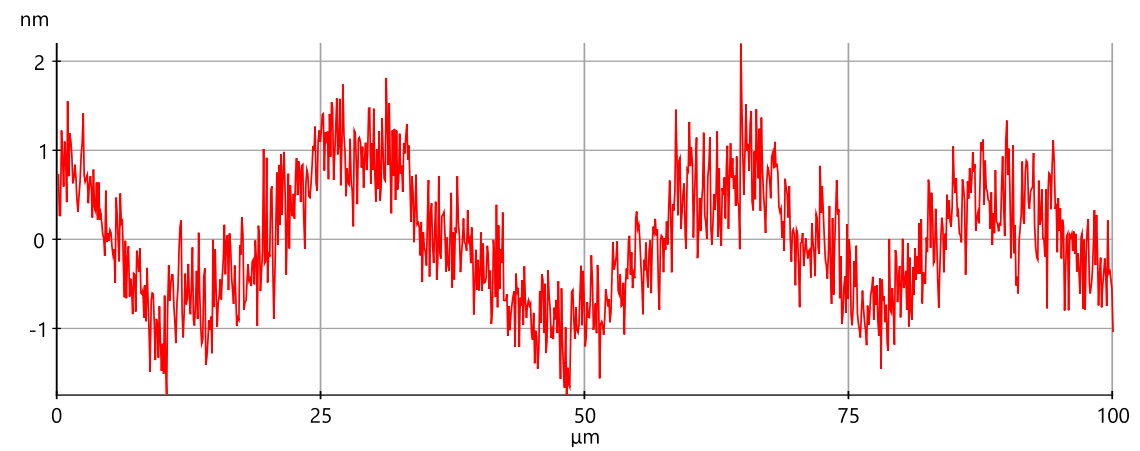


Line Profile: Red - 507

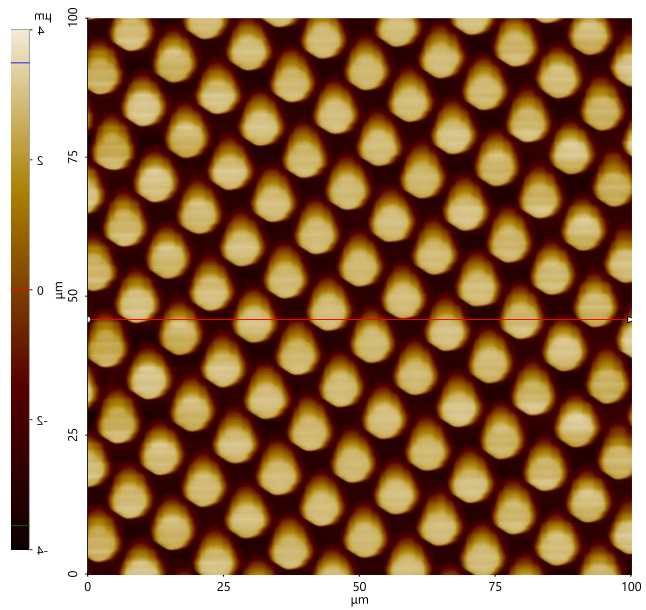
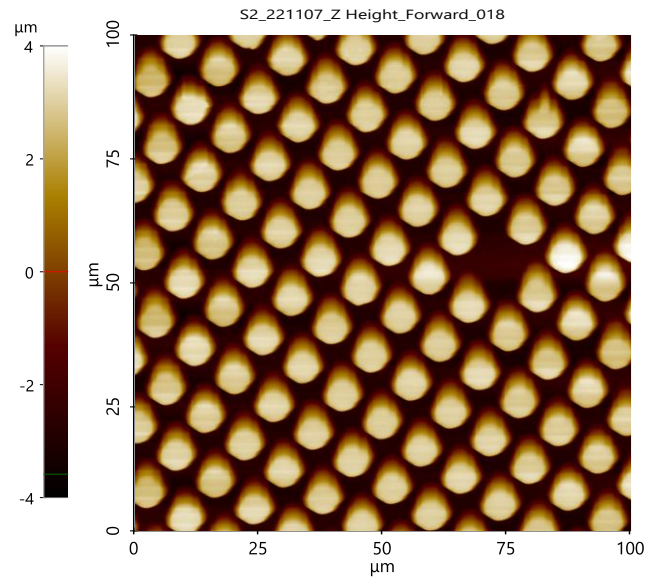


Angle (deg):

0



S2

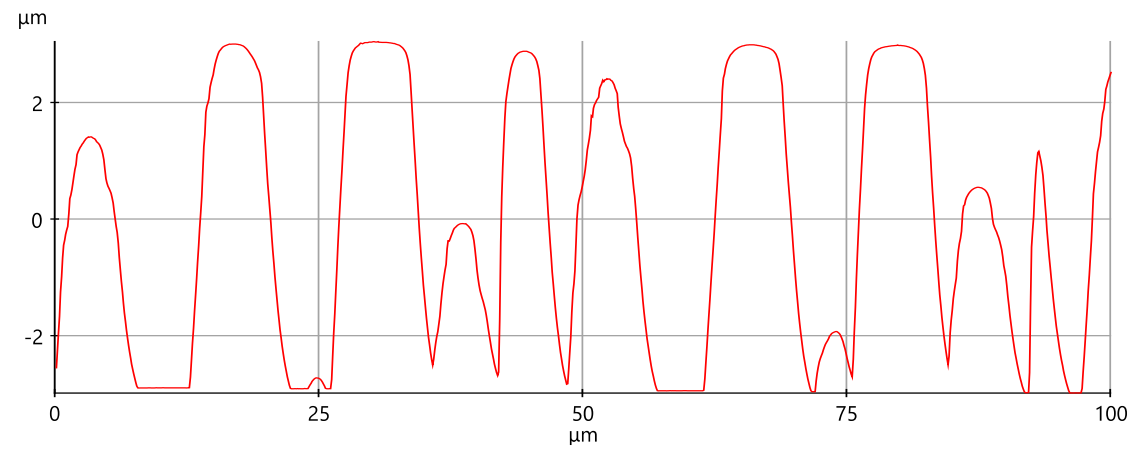


Line Profile: Red - 457

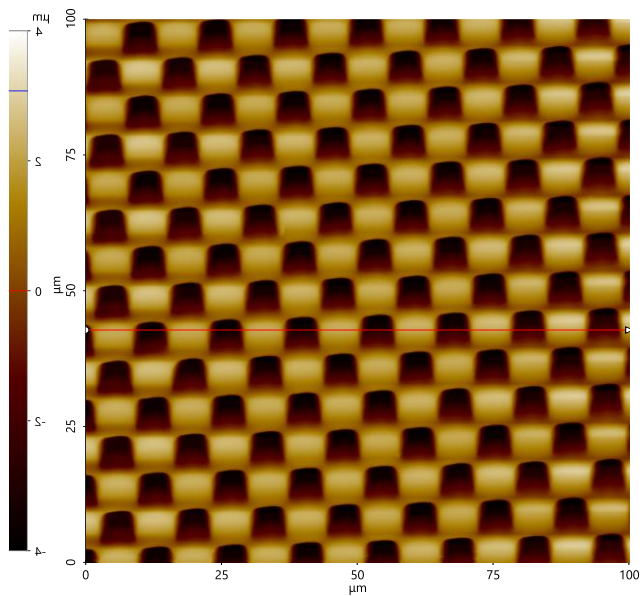
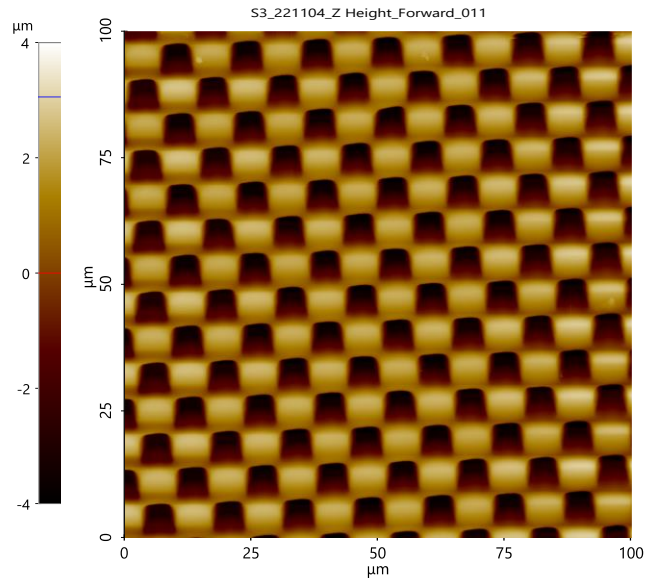


Angle (deg):

0



S3



Line Profile: Red - 439



Angle (deg):

0

